

Prefi

PREFABRİK YAPI END. BİLİŞİM ve TİCARET LTD.ŞTİ.
 Ankara - İstanbul Karayolu, 30. km
 Akıncı Kavşağı, Kazan 06980 Ankara
 Tel:90(312) 815 49 75(Pbx) Fax:90(312) 815 49 78
 www.Prefi.com.tr e-posta: prefipref.com

ÇİZEN:
 DRAWN:

KONTROL:
 CHK:

ONAYLAMA:
 APPROVAL:

FİRMA /COMPANY:

CAMP FOR 150 PERSON

TARİH/DATE:

BASLIK /TITLE:

CAMP CENTRE OF POPULATION

REFERANS:

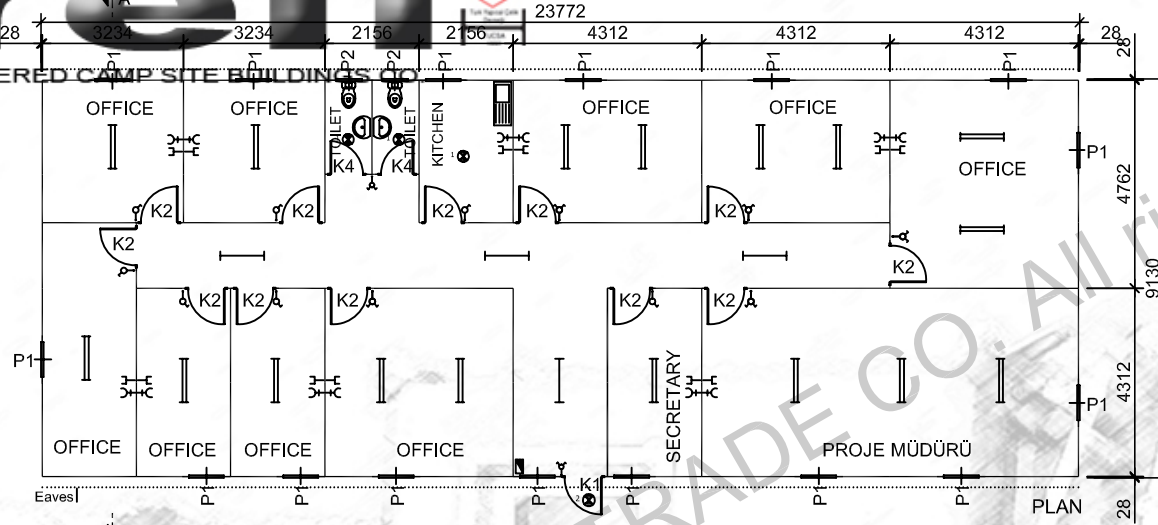
REV.NO:

SAYFA /PAGE:

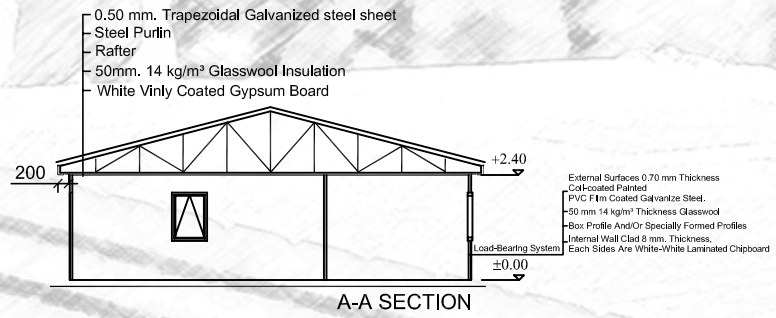
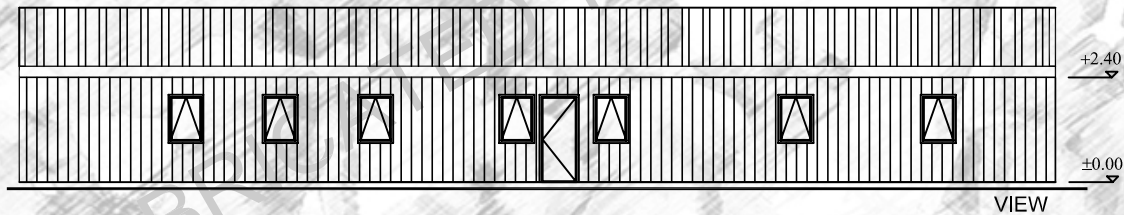
m²

Prefi

PREFI PRE-ENGINEERED CAMP SITE BUILDINGS



SWITCH
DOUBLE SWITCH
1 X 40 TMS ARMATURE
2 X 40 TMS ARMATURE
LATERAL EARTH SOCKET
TELEPHONE
C TYPE GLOBE
C TYPE GLOBE WITH WIRE GUARD
4 X 18 PARABOLIC ARM.
(220V) SURFACE MOUNTING FUSE BOX
K1 850 x 2000
K2 840 x 2000
K3 1780 x 2000
K4 740 x 2000
P1 800 x 1100
P2 800 x 400
ALL MEASURED IN MILLIMETERS



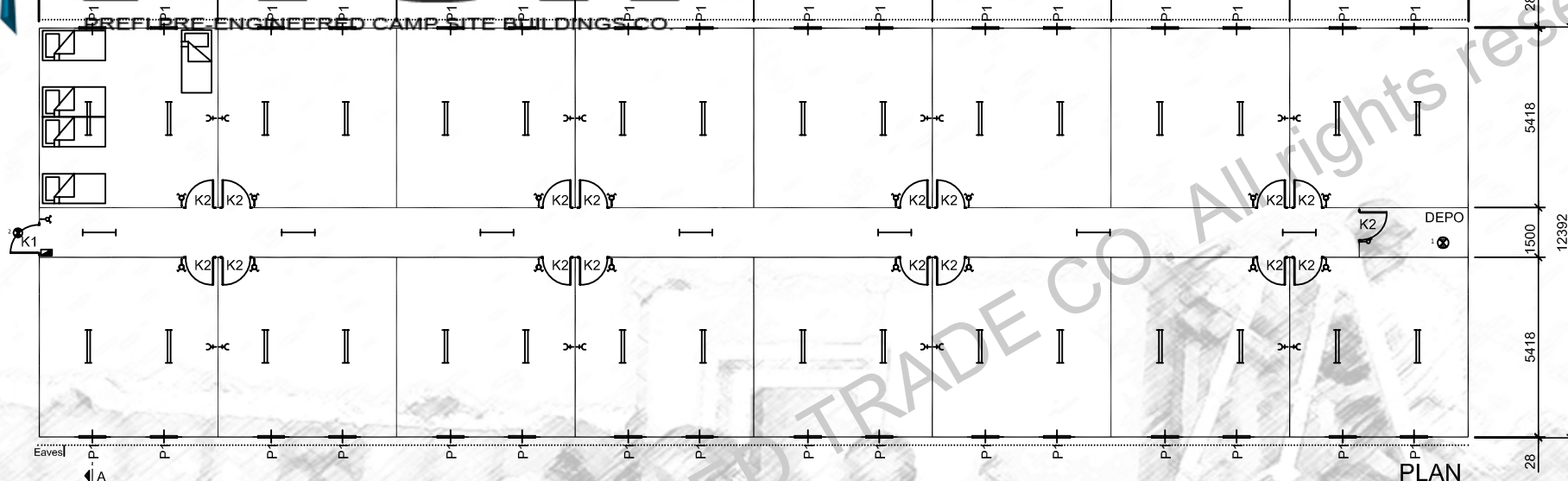
Prefi

PREFABRİK YAPI END. BİLİŞİM ve TİCARET LTD.ŞTİ.
Ankara - İstanbul Karayolu, 30. km
Akıncı Kavşağı, Kazan 06980 Ankara
Tel:+90(312) 815 49 75(Pbx) Fax:+90(312) 815 49 78
www.Prefi.com.tr e-posta: prefipref.com

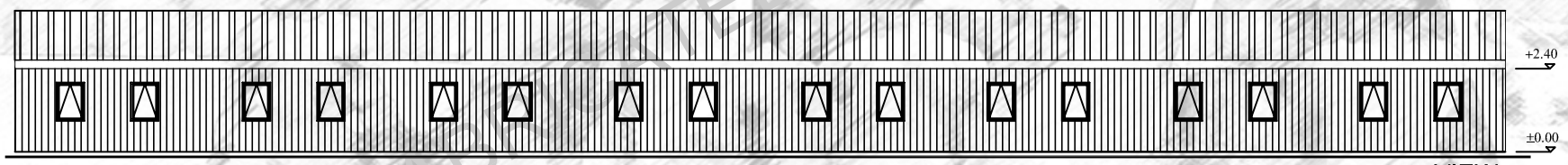
ÇİZEN:
DRAWN:
KONTROL:
CHK:
ONAYLAMA:
APPROVAL:

FİRMA / COMPANY:
CAMP FOR 150 PERSON
TARİH/DATE:

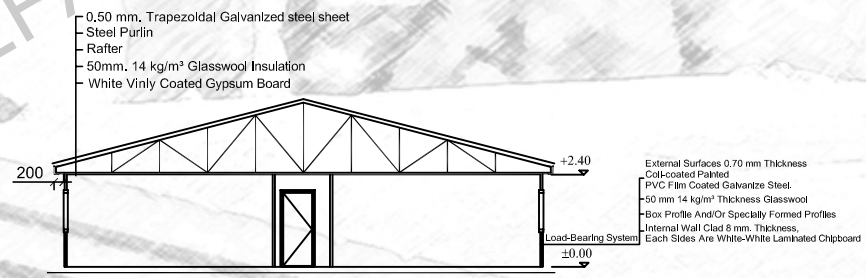
BASLIK /TITLE: **OFFICE BİNASI**
GLV-SLAM
REV.NO:
SAYFA /PAGE: 1/7



PLAN



VIEW



A-A SECTION

0.50 mm, Trapezoidal Galvanized steel sheet
 Steel Purlin
 Rafter
 50mm, 14 kg/m³ Glasswool Insulation
 White Vinly Coated Gypsum Board

External Surfaces 0.70 mm Thickness
 Cold-coated Painted
 PVC Film Coated Galvanize Steel.
 50 mm 14 kg/m³ Thickness Glasswool
 Box Profile And/Or Specialty Formed Profiles
 Internal Wall Clad 6 mm. Thickness.
 Each Sides Are White-White Laminated Chipboard

SWITCH	1 X 40 TMS ARMATURE
DOUBLE SWITCH	2 X 40 TMS ARMATURE
LATERAL EARTH SOCKET	TELEPHONE
C TYPE GLOBE	C TYPE GLOBE WITH WIRE GUARD
4 X 18 PARABOLIC ARM.	220V SURFACE MOUNTING FUSE BOX
K1 850 x 2000	K2 840 x 2000
K3 1780 x 2000	K4 740 x 2000
P1 800 x 1100	P2 600 x 400

ALL MEASURED IN MILLIMETERS

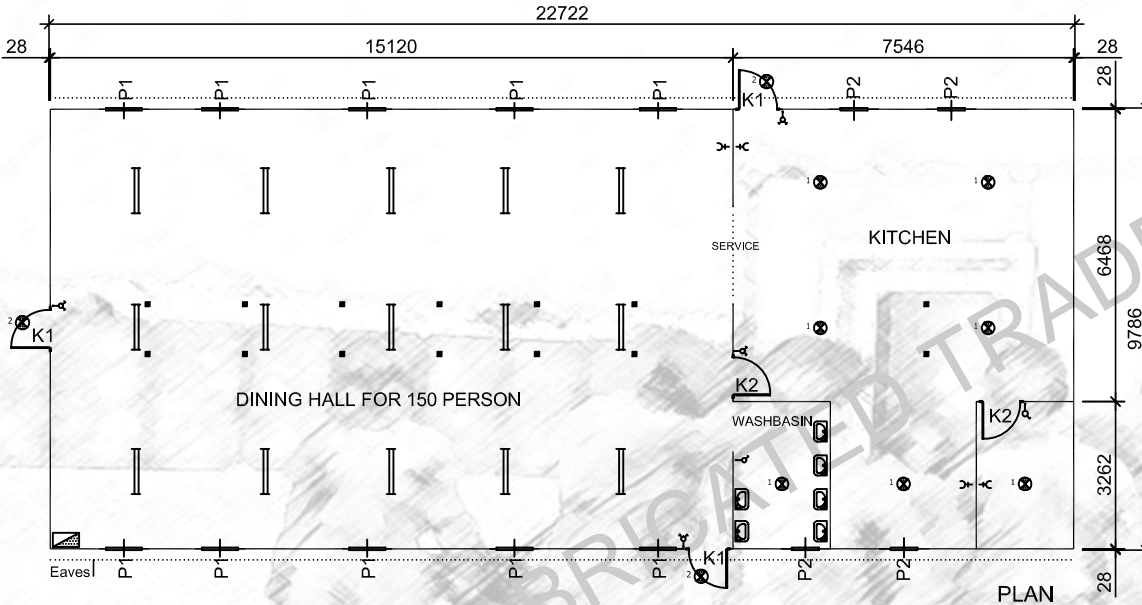
Prefi
 PREFABRIK YAPI END. BİLİŞİM ve TİCARET LTD.ŞTİ.
 Ankara - İstanbul Karayolu, 30. km
 Akıncı Kavşağı, Kazan 06980 Ankara
 Tel:+90(312) 815 49 75(Pbx) Fax:+90(312) 815 49 78
 www.Prefi.com.tr e-posta: prefipref.com

ÇİZEN:
 DRAWN:
 KONTROL:
 CHK:
 ONAYLAMA:
 APPROVAL:

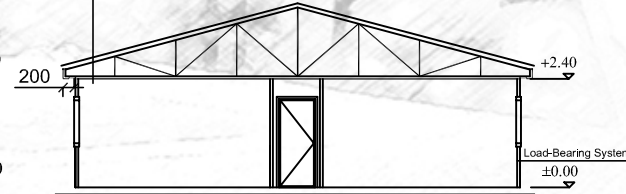
FİRMA /COMPANY:
CAMP FOR 150 PERSON
 TARİH/DATE:

BASLIK /TITLE: DORMITORY BUILDING (FOR 150 PERSON)	2 m
GLV-SLAM	535.03
REFERANS:	SAYFA /PAGE: 2/7
REV.NO:	

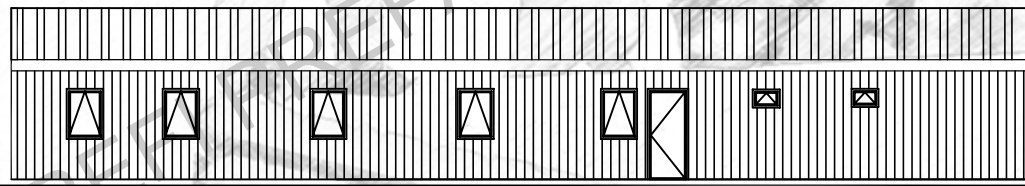
	SWITCH
	DOUBLE SWITCH
	1 X 40 TMS ARMATURE
	2 X 40 TMS ARMATURE
	LATERAL EARTH SOCKET
	TELEPHONE
	C TYPE GLOBE
	C TYPE GLOBE WITH WIRE GUARD
	4 X 18 PARABOLIC ARM
	(220V) SURFACE MOUNTING FUSE BOX
	K1 850 x 2000
	K2 840 x 2000
	K3 1760 x 2000
	K4 740 x 2000
	P1 800 x 1100
	P2 600 x 400
ALL MEASURED IN MILLIMETERS	



- 0.50 mm. Trapezoidal Galvanized steel sheet
- Steel Purlin
- Rafter
- 50mm. 14 kg/m³ Glasswool Insulation
- White Vinly Coated Gypsum Board



- External Surfaces 0.70 mm Thickness
- Coil-coated Painted
- PVC Film Coated Galvanize Steel.
- 50 mm 14 kg/m³ Thickness Glasswool
- Box Profile And/Or Specially Formed Profiles
- Internal Wall Clad 8 mm. Thickness.
- Each Sides Are White-White Laminated Chipboard



Prefi

PREFABRİK YAPI END. BİLİŞİM ve TİCARET LTD.ŞTİ.
Ankara - İstanbul Karayolu, 30. km
Akıncı Kavşağı, Kazan 06980 Ankara
Tel:+90(312) 815 49 75(Pbx) Fax:+90(312) 815 49 78
www.Prefi.com.tr e-posta: prefipref.com

ÇİZEN:
DRAWN:

KONTROL:
CHK:

ONAYLAMA:
APPROVAL:

FİRMA /COMPANY:

CAMP FOR 150 PERSON

TARİH/DATE:

BASLIK /TITLE:

DINING HALL BUILDING(FOR 150 PERSON)

GLV-SLAM

REFERANS:

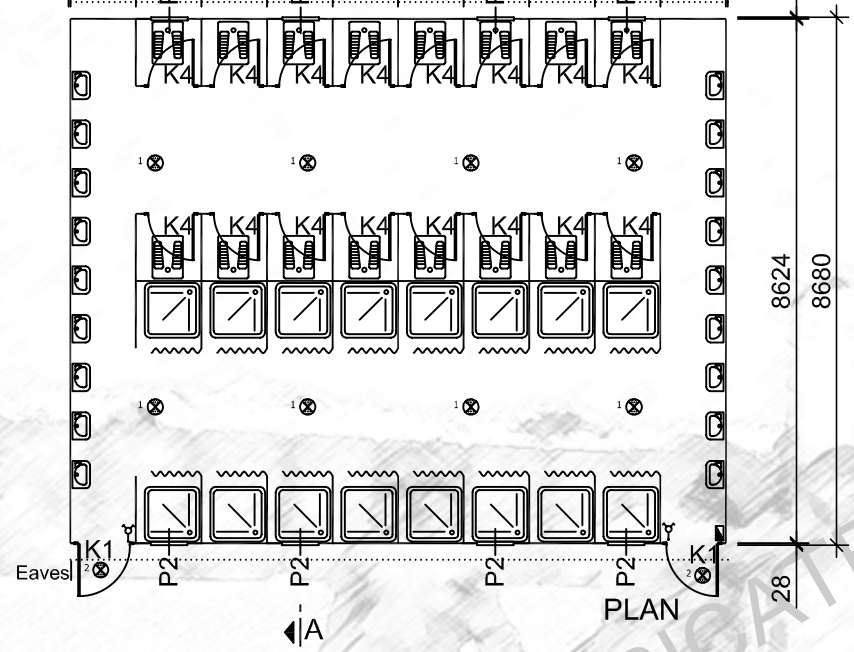
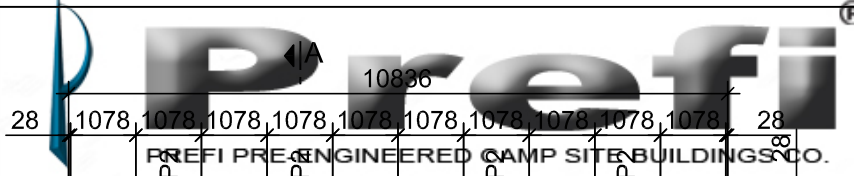
REV.NO:

SAYFA /PAGE:

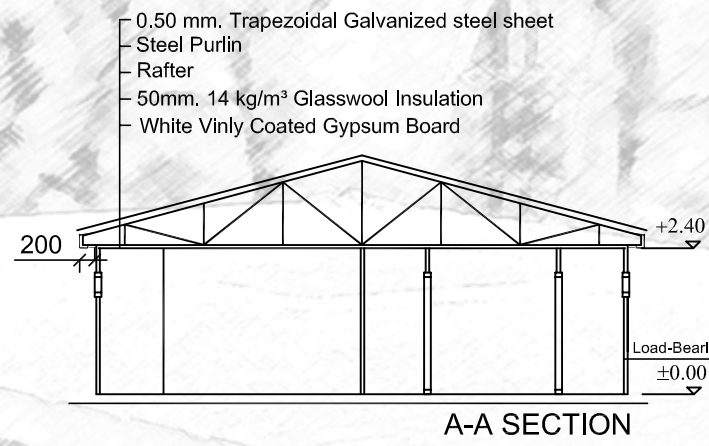
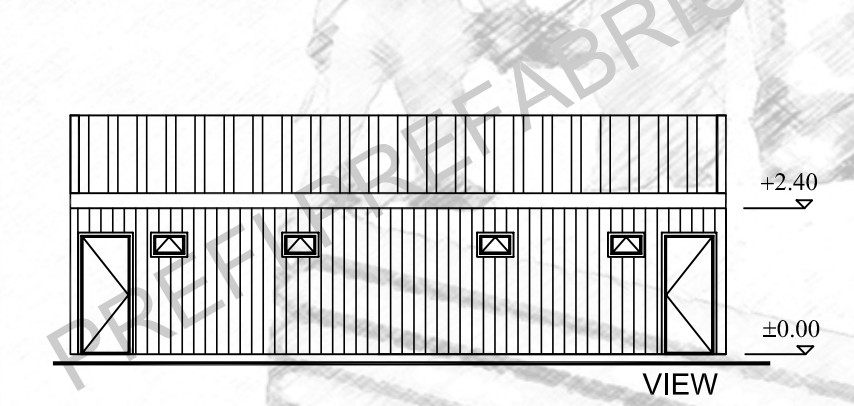
2
m

201.25

3/7



	SWITCH
	DOUBLE SWITCH
	1 X 40 TMS ARMATURE
	2 X 40 TMS ARMATURE
	LATERAL EARTH SOCKET
	TELEPHONE
	C TYPE GLOBE
	C TYPE GLOBE WITH WIRE GUARD
	4 x 18 PARABOLIC ARM
	220V SURFACE MOUNTING FUSE BOX
K1	850 x 2000
K2	840 x 2000
K3	1760 x 2000
K4	740 x 2000
P1	800 x 1100
P2	600 x 400
ALL MEASURED IN MILLIMETERS	



- External Surfaces 0.70 mm Thickness Coil-coated Painted
- PVC Film Coated Galvanize Steel.
- 50 mm 14 kg/m³ Thickness Glasswool
- Box Profile And/Or Specially Formed Profiles
- Internal Wall Clad 8 mm. Thickness,
- Each Sides Are White-White Laminated Chipboard

Prefi
 PREFABRIK YAPI END. BİLİŞİM ve TİCARET LTD.ŞTİ.
 Ankara - İstanbul Karayolu, 30. km
 Akıncı Kavşağı, Kazan 06980 Ankara
 Tel:+90(312) 815 49 75(Pbx) Fax:+90(312) 815 49 78
 www.Prefi.com.tr e-posta: prefipref.com

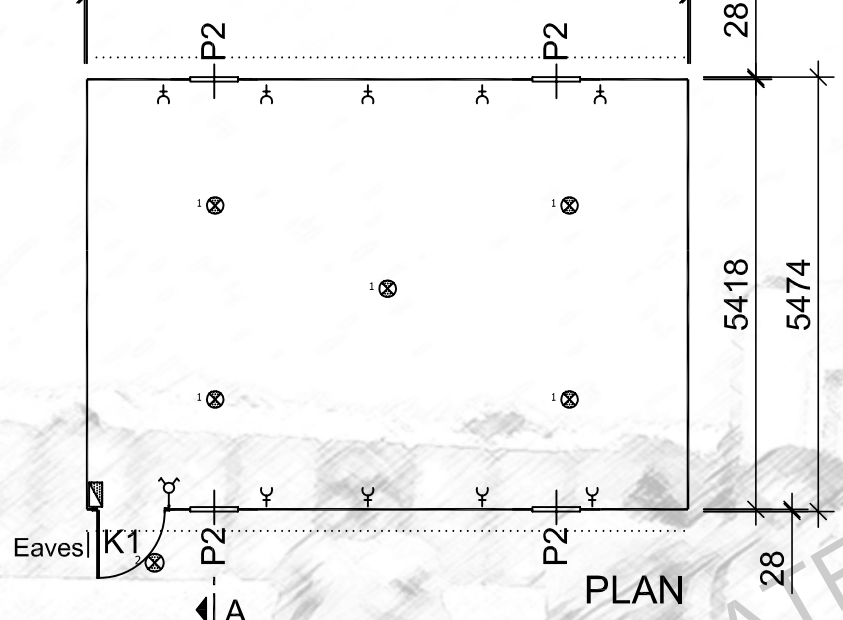
ÇİZEN:
 DRAWN:
 KONTROL:
 CHK:
 ONAYLAMA:
 APPROVAL:

FİRMA /COMPANY:
CAMP FOR 150 PERSON
 TARİH/DATE:

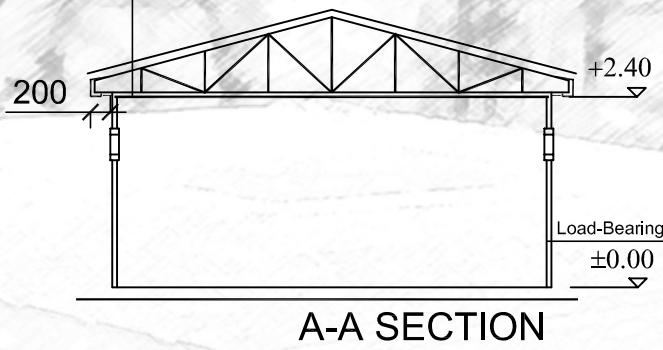
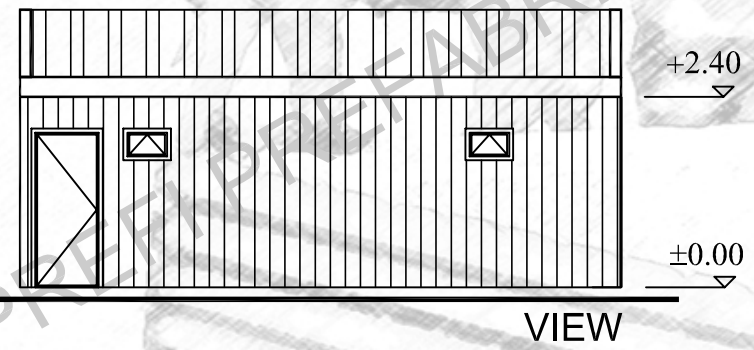
BASLIK /TITLE:
TOILET&SHOWER BUILDING
GLV-SLAM
 REFERANS:
 REV.NO:
 SAYFA /PAGE:
 4/7



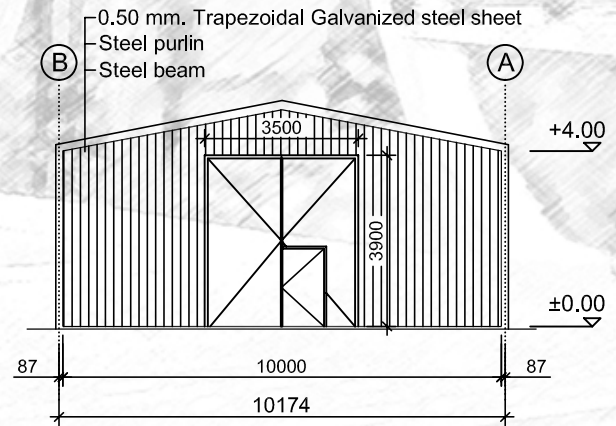
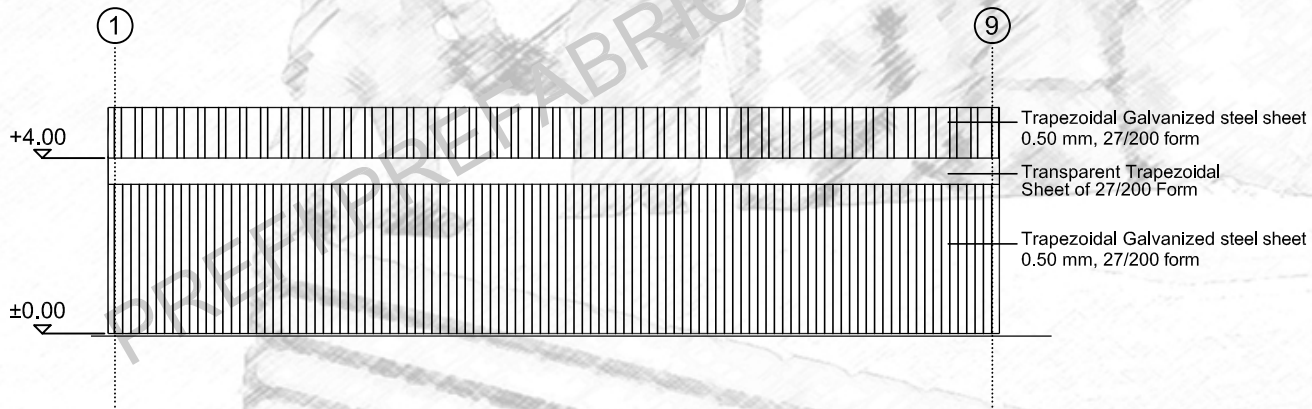
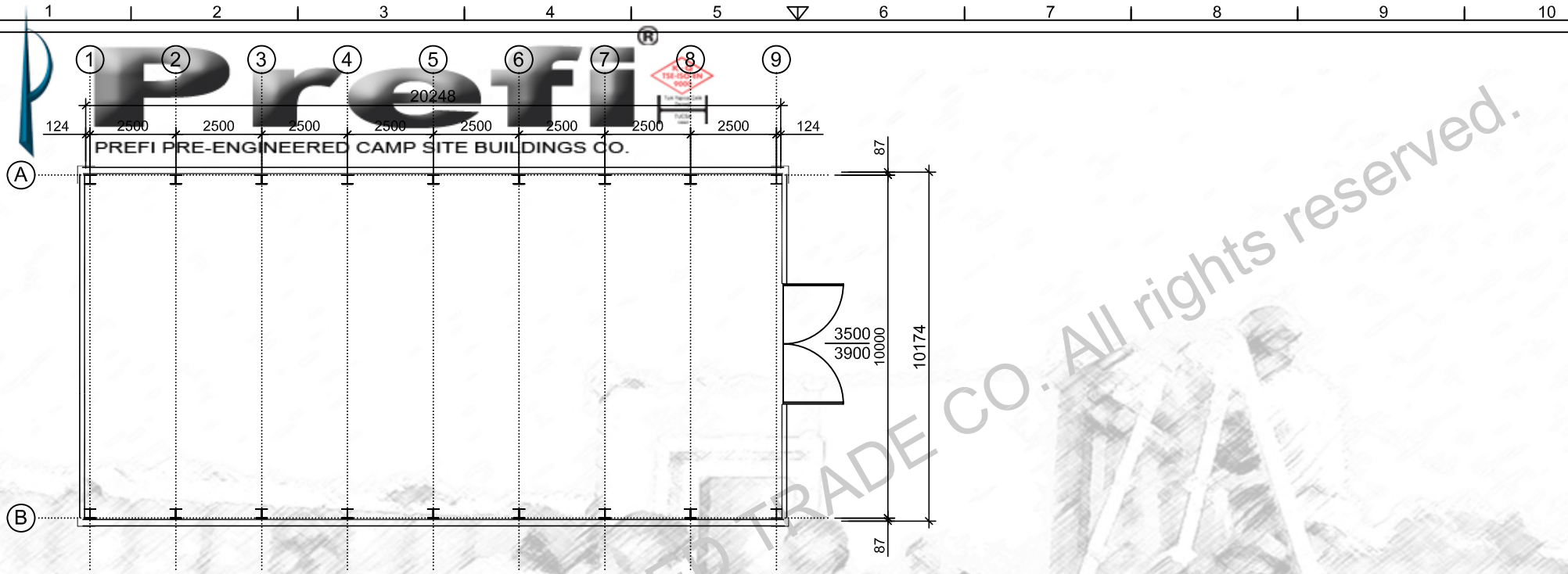
	SWITCH
	DOUBLE SWITCH
	1 X 40 TMS ARMATURE
	2 X 40 TMS ARMATURE
	LATERAL EARTH SOCKET
	TELEPHONE
	C TYPE GLOBE
	C TYPE GLOBE WITH WIRE GUARD
	4 x 18 PARABOLIC ARM.
	(220V)SURFACE MOUNTING FUSE BOX
K1	850 x 2000
K2	840 x 2000
K3	1760 x 2000
K4	740 x 2000
P1	800 x 1100
P2	600 x 400
ALL MEASURED IN MILLIMETERS	



- 0,50 mm. Trapezoidal Galvanized steel sheet
- Steel Purlin
- Rafter
- 50mm. 14 kg/m³ Glasswool Insulation
- White Vinly Coated Gypsum Board



- External Surfaces 0.70 mm Thickness Coil-coated Painted PVC Film Coated Galvanize Steel.
- 50 mm 14 kg/m³ Thickness Glasswool
- Box Profile And/Or Specially Formed Profiles
- Internal Wall Clad 8 mm. Thickness, Each Sides Are White-White Laminated Chipboard



Prefi

PREFABRIK YAPI END. BİLİŞİM ve TİCARET LTD.ŞTİ.
Ankara - İstanbul Karayolu, 30. km
Akıncı Kavşağı, Kazan 06980 Ankara
Tel: +90(312) 815 49 75(Pbx) Fax: +90(312) 815 49 78
www.Prefi.com.tr e-posta: prefipref.com

ÇİZEN:
DRAWN:

KONTROL:
CHK:

ONAYLAMA:
APPROVAL:

FİRMA /COMPANY:

CAMP FOR 150 PERSON

TARİH/DATE:

BAŞLIK /TITLE:

WAREHOUSE

REFERANS:

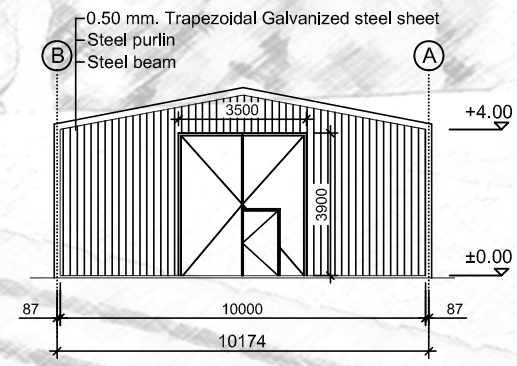
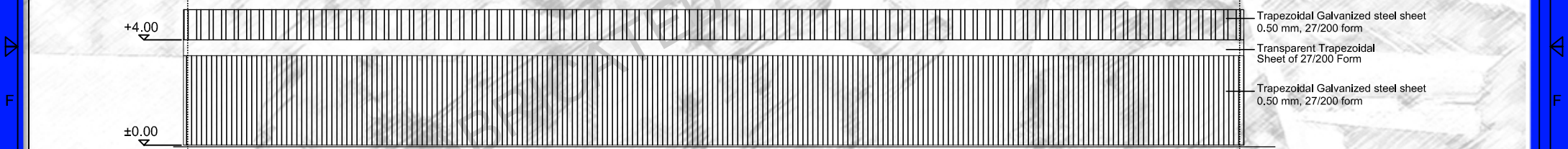
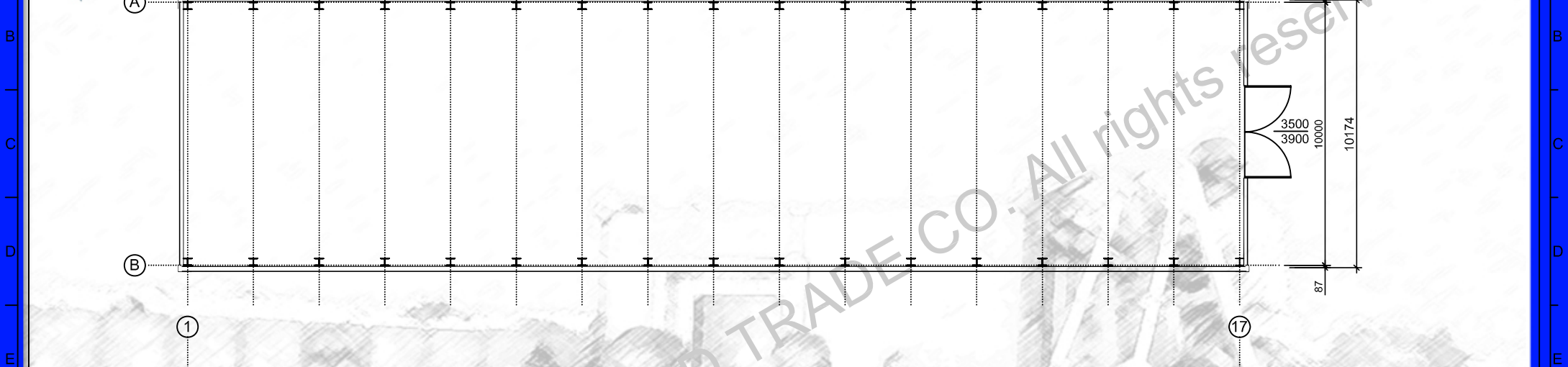
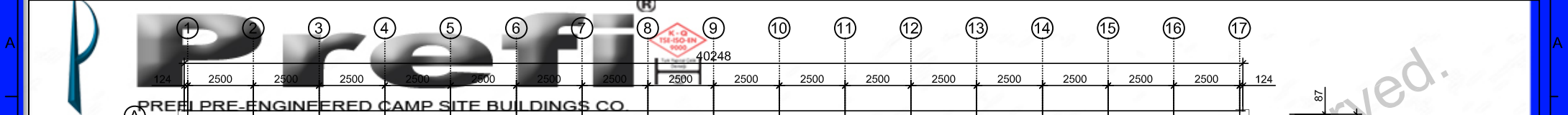
REV.NO:

SAYFA /PAGE:

2
m

206.00

6/7



P r e f i

PREFABRIK YAPI END. BİLİŞİM ve TİCARET LTD.ŞTİ.
Ankara - İstanbul Karayolu, 30. km
Akıncı Kavşağı, Kazan 06980 Ankara
Tel: +90(312) 815 49 75(Pbx) Fax: +90(312) 815 49 78
www.Prefi.com.tr e-posta: prefipref.com

ÇİZEN:
DRAWN:
KONTROL:
CHK:
ONAYLAMA:
APPROVAL:

FİRMA /COMPANY:
CAMP FOR 150 PERSON
TARİH/DATE:

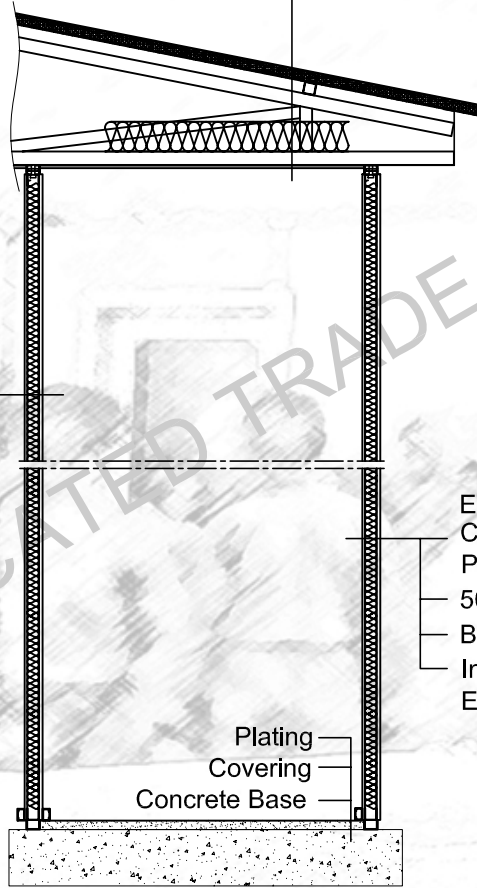
BAŞLIK /TITLE:
WAREHOUSE
REFERANS:
REV.NO:
SAYFA /PAGE:
7/7

2
m²
409.48



Prefi
PREFI PRE-ENGINEERED CAMP SITE BUILDINGS CO.

0.50 mm. Trapezoidal Galvanized steel sheet
Steel Purlin
Rafter
50mm. 14 kg/m³ Glasswool Insulation
White Vinyl Coated Gypsum Board



Internal Wall Clad 8 mm. Thickness Each Sides
Are White-White Laminated Chipboard
50 mm. 14 kg/m³ Thickness Glasswool
Box Profile And/Or Specially Formed Profiles
Internal Wall Clad 8 mm. Thickness Each Sides
Are White-White Laminated Chipboard

External Surfaces 0.70 mm Thickness
Coil-coated Painted
PVC Film Coated Galvanize Steel.
50 mm. 14 kg/m³ Thickness Glasswool
Box Profile And/Or Specially Formed Profiles
Internal Wall Clad 8 mm. Thickness
Each Sides Are White-White Laminated Chipboard

Plating
Covering
Concrete Base

Prefi

PREFABRIK YAPI END. BİLİŞİM ve TİCARET LTD.ŞTİ.
Ankara - İstanbul Karayolu, 30. km
Akıncı Kavşağı, Kazan 06980 Ankara
Tel: +90(312) 815 49 75(Pbx) Fax: +90(312) 815 49 78
www.Prefi.com.tr e-posta: prefipref.com

ÇİZEN:
DRAWN:

KONTROL:
CHK:

ONAYLAMA:
APPROVAL:

FİRMA /COMPANY:

TARİH/DATE:

BAŞLIK /TITLE:

PANEL DETAIL

GLV SLAM

m²

REFERANS:

REV.NO:

SAYFA /PAGE:



Pre fi
 PREFI PRE-ENGINEERED CAMP SITE BUILDINGS CO.



DOUBLE SIDE WHITE/WHITE LAMINATED CHIPBOARD
 40x40 BOX PROFILE GLASSWOOL INSULATION
 50 mm (14 kg/m³ DENSITY)
 COIL-COATED (RAL 9002)
 GALVANIZED STEEL PLATE

ROOF TRUSS
 CONNECTION PROFILE
 M10 BOLT/NUT (8.8)

A
 ←

A VIEW

Pre fi

PREFİ PREFABRİK YAPI END. BİLİŞİM ve TİCARET LTD.ŞTİ.
 Ankara - İstanbul Karayolu, 30. km
 Kazan 06980 Ankara/TURKEY
 Tel:90(312) 815 49 75(Pbx) Fax:90(312) 815 49 78
 www.Prefi.com.tr e-posta: prefi@prefi.com.tr

DRAWN:
 CHK:
 ONAYLAMA:
 APPROVAL: **H. VAKUR YILMAZYİĞİT**

FİRMA /COMPANY:
 TARİH/DATE:

BAŞLIK /TITLE: DETAIL OF PANEL CONNECTION		2 m
GLV-SLAM		
REFERANS:	REV.NO:	SAYFA /PAGE: