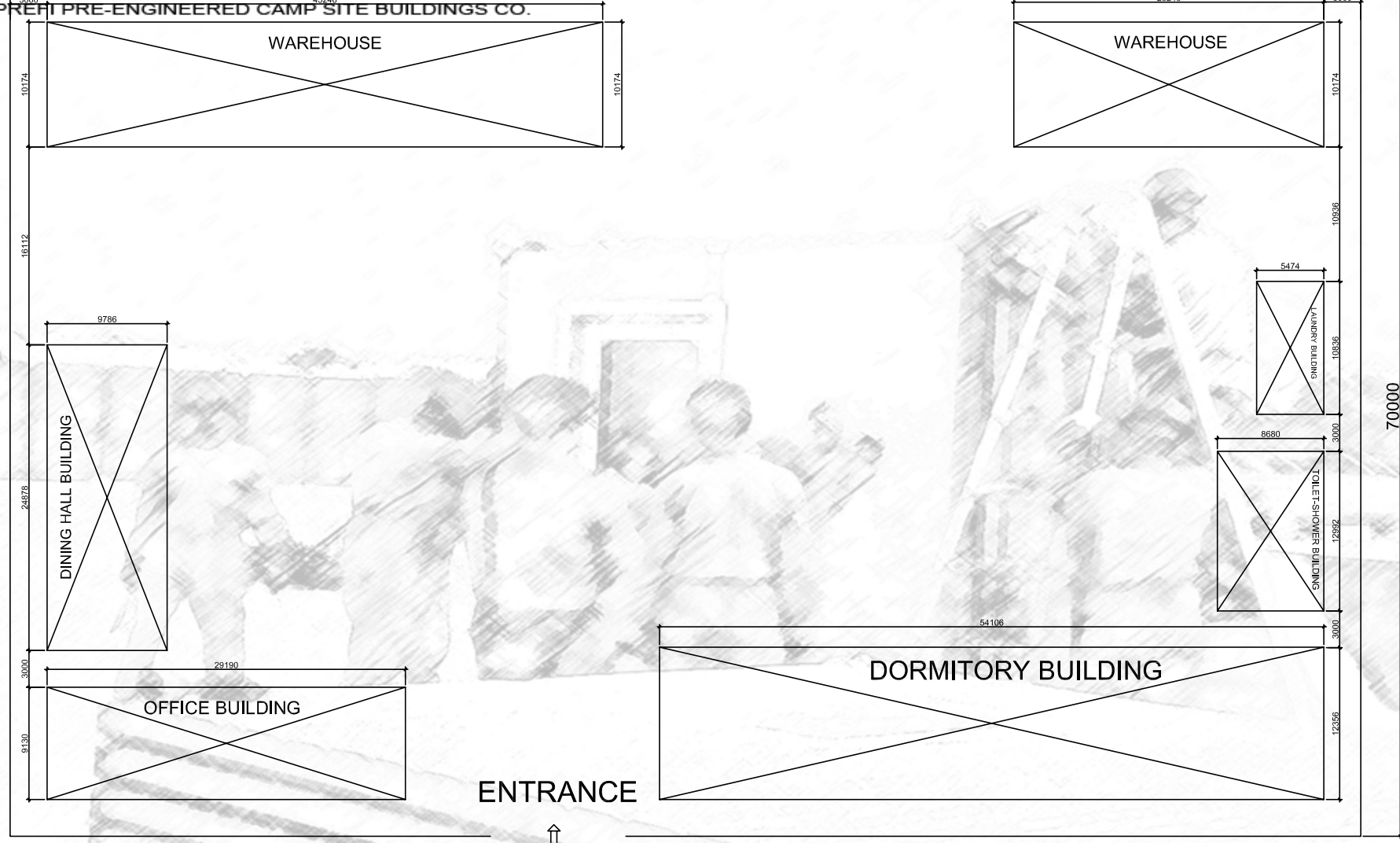


# Prefi



110000

PREFI PRE-ENGINEERED CAMP SITE BUILDINGS CO.



# Prefi

PREFABRIK YAPI END. BİLİŞİM ve TİCARET LTD.ŞTİ.  
Ankara - İstanbul Karayolu, 30. km  
Akıncı Kavşağı, Kazan 06980 Ankara  
Tel:90(312) 815 49 75(Pbx) Fax:90(312) 815 49 78  
www.Prefi.com.tr e-posta: prefipref.com

ÇİZEN:  
DRAWN:

KONTROL:  
CHK:

ONAYLAMA:  
APPROVAL:

FİRMA /COMPANY:

CAMP FOR 200 PERSON

TARİH/DATE:

BASLIK /TITLE:

CAMP CENTRE OF POPULATION

REFERANS:

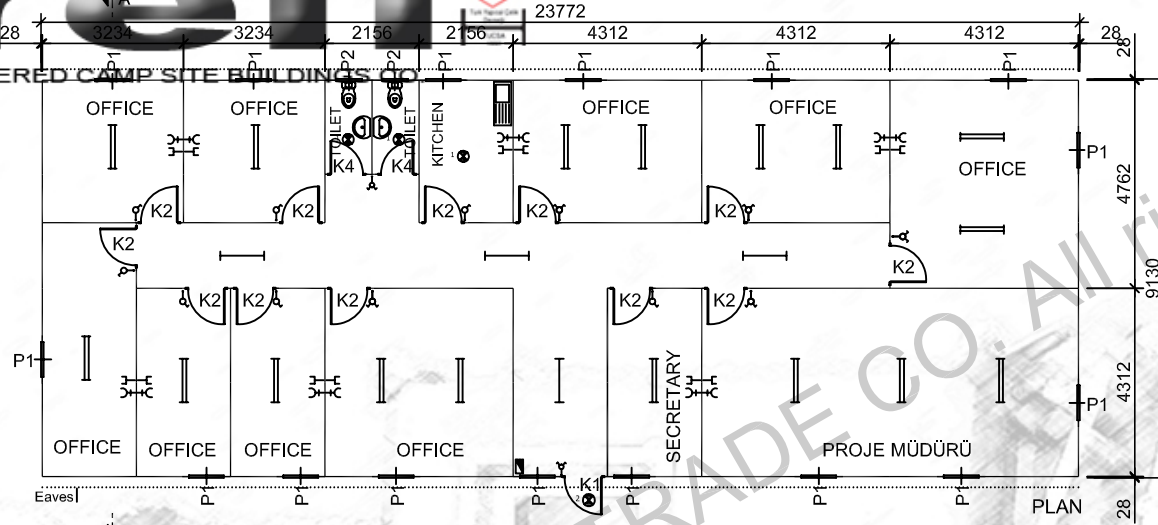
REV.NO:

SAYFA /PAGE:

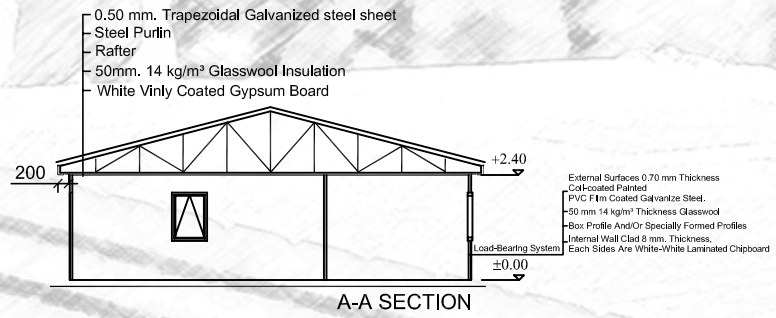
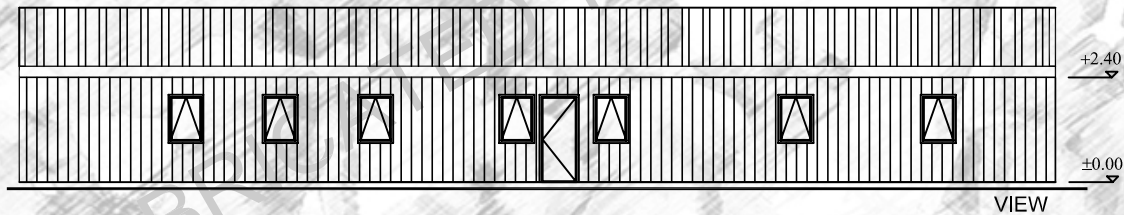
m<sup>2</sup>

# Prefi

PREFI PRE-ENGINEERED CAMP SITE BUILDINGS



SWITCH
DOUBLE SWITCH
1 X 40 TMS ARMATURE
2 X 40 TMS ARMATURE
LATERAL EARTH SOCKET
TELEPHONE
C TYPE GLOBE
C TYPE GLOBE WITH WIRE GUARD
4 X 18 PARABOLIC ARM.
220V SURFACE MOUNTING FUSE BOX
K1 850 x 2000
K2 840 x 2000
K3 1780 x 2000
K4 740 x 2000
P1 800 x 1100
P2 800 x 400
ALL MEASURED IN MILLIMETERS

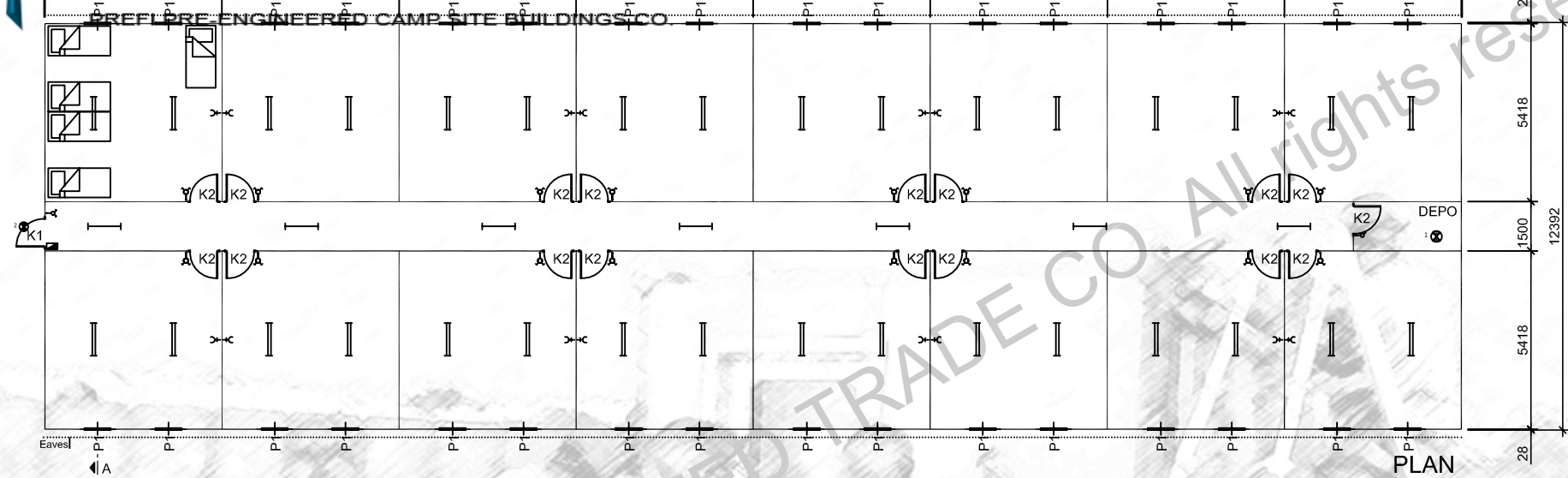


**Prefi**  
PREFABRİK YAPI END. BİLİŞİM ve TİCARET LTD.ŞTİ.  
Ankara - İstanbul Karayolu, 30. km  
Akıncı Kavşağı, Kazan 06980 Ankara  
Tel:+90(312) 815 49 75(Pbx) Fax:+90(312) 815 49 78  
www.Prefi.com.tr e-posta: prefipref.com

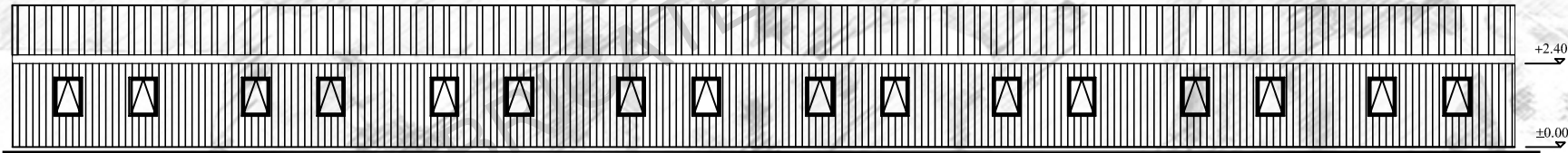
ÇİZEN:  
DRAWN:  
KONTROL:  
CHK:  
ONAYLAMA:  
APPROVAL:

FİRMA / COMPANY:  
**CAMP FOR 150 PERSON**  
TARİH/DATE:

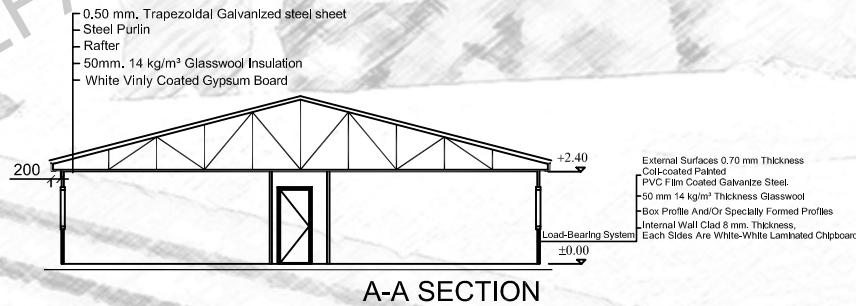
BASLIK /TITLE: **OFFICE BİNASI**  
**GLV-SLAM**  
REFERANS: REV.NO: SAYFA /PAGE: 1/7



PLAN



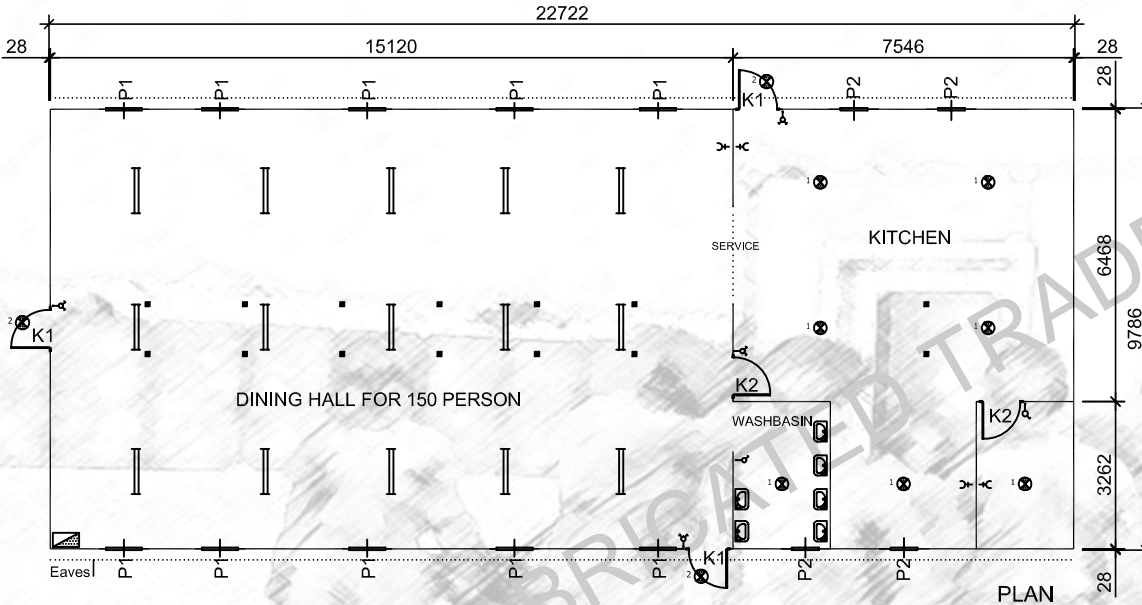
VIEW



A-A SECTION

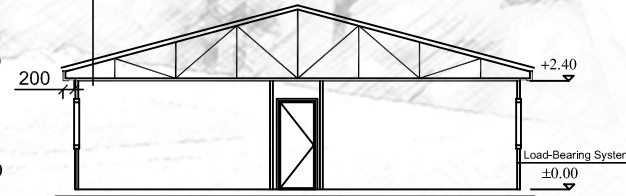
SWITCH
DOUBLE SWITCH
1 X 40 TMS ARMATURE
2 X 40 TMS ARMATURE
LATERAL EARTH SOCKET
TELEPHONE
C TYPE GLOBE
C TYPE GLOBE WITH WIRE GUARD
4 x 18 PARABOLIC ARM.
(220V) SURFACE MOUNTING FUSE BOX
K1 850 x 2000
K2 840 x 2000
K3 1780 x 2000
K4 740 x 2000
P1 800 x 1100
P2 600 x 400
ALL MEASURED IN MILLIMETERS

	SWITCH
	DOUBLE SWITCH
	1 X 40 TMS ARMATURE
	2 X 40 TMS ARMATURE
	LATERAL EARTH SOCKET
	TELEPHONE
	C TYPE GLOBE
	C TYPE GLOBE WITH WIRE GUARD
	4 X 18 PARABOLIC ARM
	(220V) SURFACE MOUNTING FUSE BOX
	K1 850 x 2000
	K2 840 x 2000
	K3 1760 x 2000
	K4 740 x 2000
	P1 800 x 1100
	P2 600 x 400
ALL MEASURED IN MILLIMETERS	



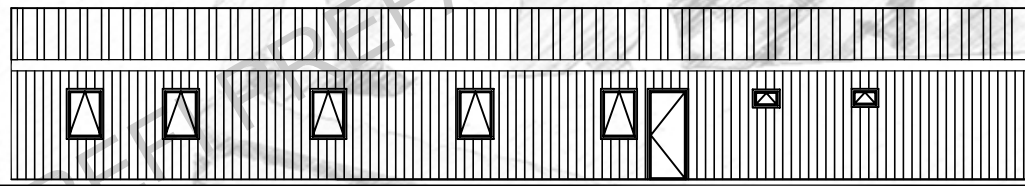
PLAN

- 0.50 mm. Trapezoidal Galvanized steel sheet
- Steel Purlin
- Rafter
- 50mm. 14 kg/m<sup>3</sup> Glasswool Insulation
- White Vinly Coated Gypsum Board



A-A SECTION

- External Surfaces 0.70 mm Thickness
- Coil-coated Painted
- PVC Film Coated Galvanize Steel.
- 50 mm 14 kg/m<sup>3</sup> Thickness Glasswool
- Box Profile And/Or Specially Formed Profiles
- Internal Wall Clad 8 mm. Thickness.
- Each Sides Are White-White Laminated Chipboard



VIEW

**Prefi**

PREFABRİK YAPI END. BİLİŞİM ve TİCARET LTD.ŞTİ.  
Ankara - İstanbul Karayolu, 30. km  
Akıncı Kavşağı, Kazan 06980 Ankara  
Tel:+90(312) 815 49 75(Pbx) Fax:+90(312) 815 49 78  
www.Prefi.com.tr e-posta: prefipref.com

ÇİZEN:  
DRAWN:

KONTROL:  
CHK:

ONAYLAMA:  
APPROVAL:

FİRMA /COMPANY:

CAMP FOR 150 PERSON

TARİH/DATE:

BASLIK /TITLE:

DINING HALL BUILDING(FOR 150 PERSON)

GLV-SLAM

REFERANS:

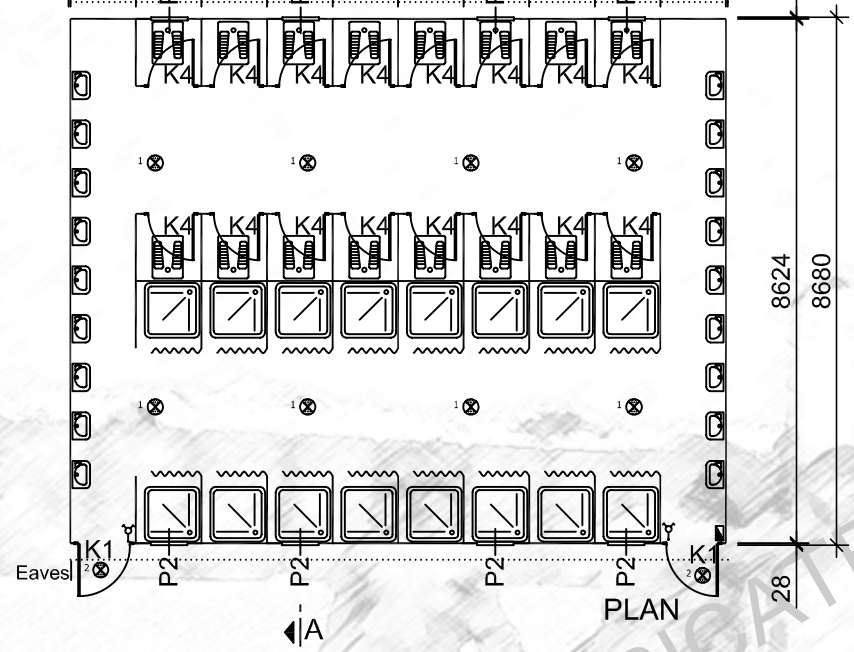
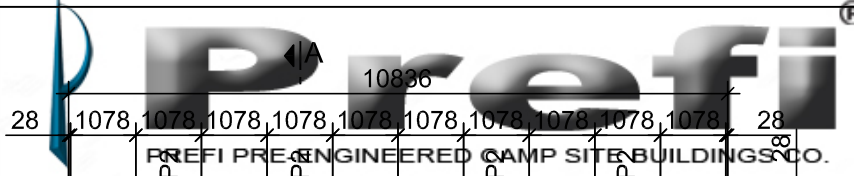
REV.NO:

SAYFA /PAGE:

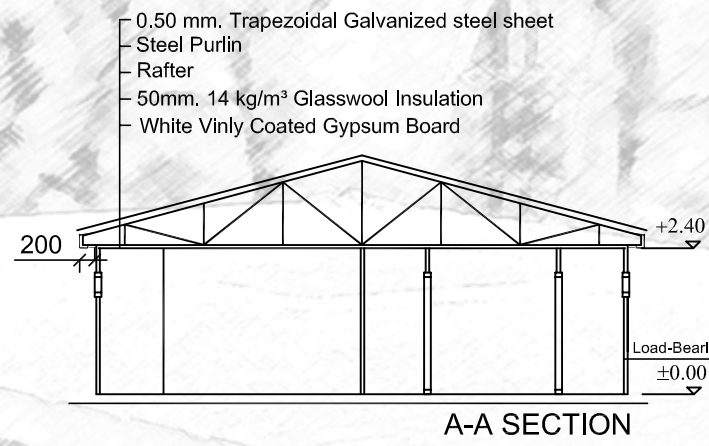
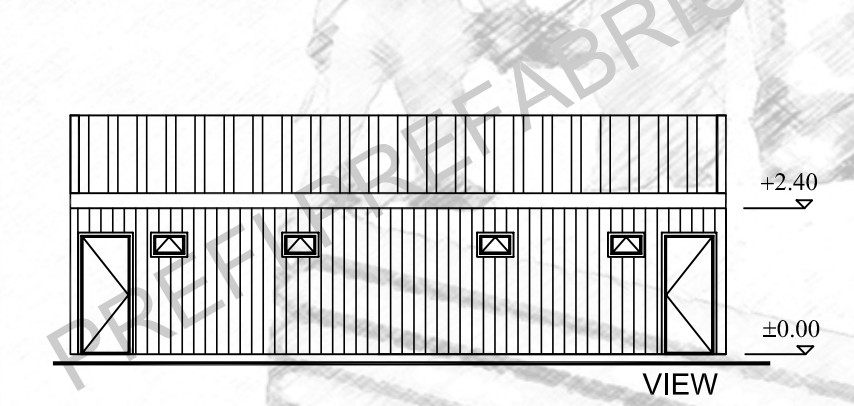
2  
m

201.25

3/7



	SWITCH
	DOUBLE SWITCH
	1 X 40 TMS ARMATURE
	2 X 40 TMS ARMATURE
	LATERAL EARTH SOCKET
	TELEPHONE
	C TYPE GLOBE
	C TYPE GLOBE WITH WIRE GUARD
	4 x 18 PARABOLIC ARM
	220V SURFACE MOUNTING FUSE BOX
K1	850 x 2000
K2	840 x 2000
K3	1760 x 2000
K4	740 x 2000
P1	800 x 1100
P2	600 x 400
ALL MEASURED IN MILLIMETERS	



- External Surfaces 0.70 mm Thickness Coil-coated Painted
- PVC Film Coated Galvanize Steel.
- 50 mm 14 kg/m<sup>3</sup> Thickness Glasswool
- Box Profile And/Or Specially Formed Profiles
- Internal Wall Clad 8 mm. Thickness,
- Each Sides Are White-White Laminated Chipboard

**Prefi**  
 PREFABRIK YAPI END. BİLİŞİM ve TİCARET LTD.ŞTİ.  
 Ankara - İstanbul Karayolu, 30. km  
 Akıncı Kavşağı, Kazan 06980 Ankara  
 Tel:+90(312) 815 49 75(Pbx) Fax:+90(312) 815 49 78  
 www.Prefi.com.tr e-posta: prefipref.com

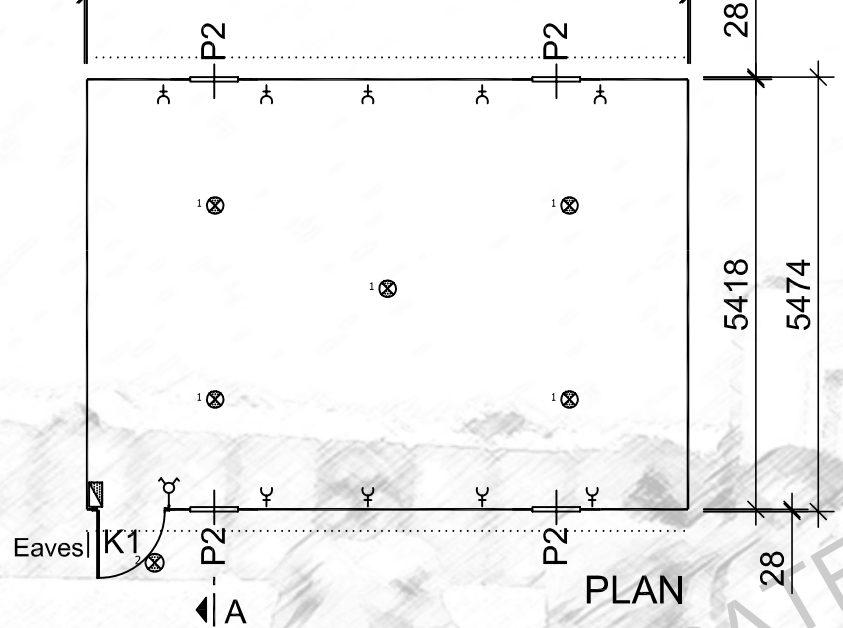
ÇİZEN:  
 DRAWN:  
 KONTROL:  
 CHK:  
 ONAYLAMA:  
 APPROVAL:

FİRMA /COMPANY:  
**CAMP FOR 150 PERSON**  
 TARİH/DATE:

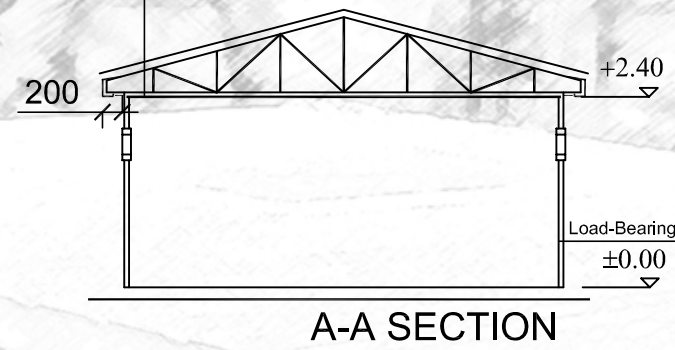
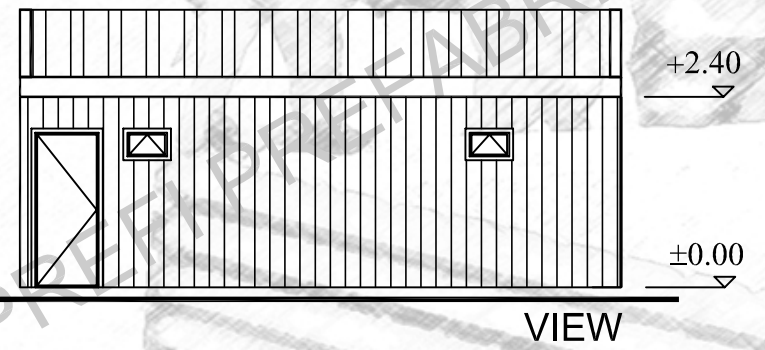
BASLIK /TITLE:  
**TOILET&SHOWER BUILDING**  
**GLV-SLAM**  
 REFERANS:  
 REV.NO:  
 SAYFA /PAGE:  
 4/7



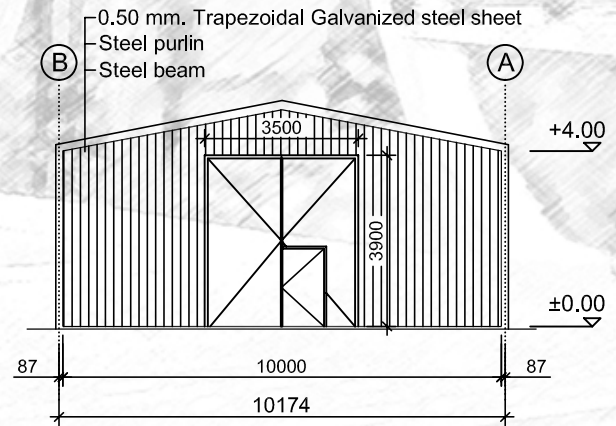
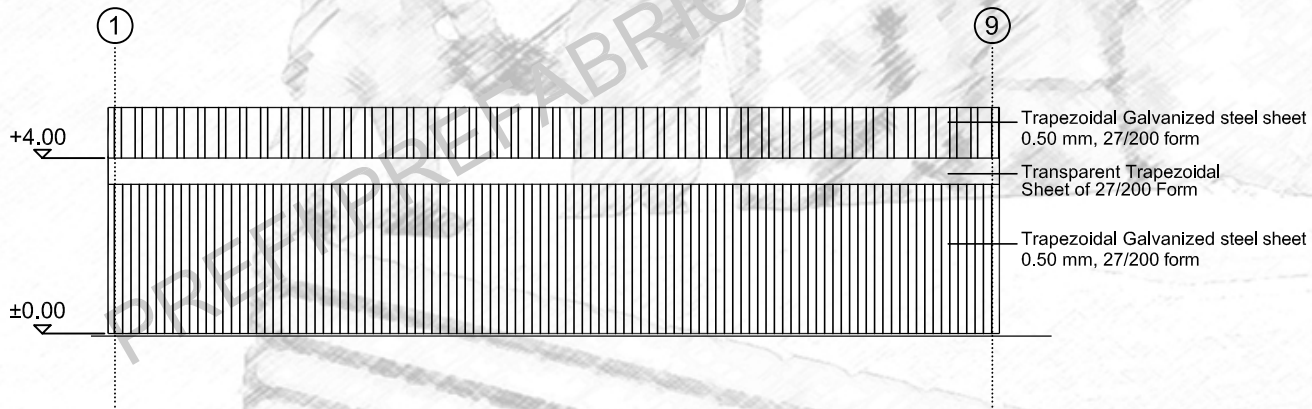
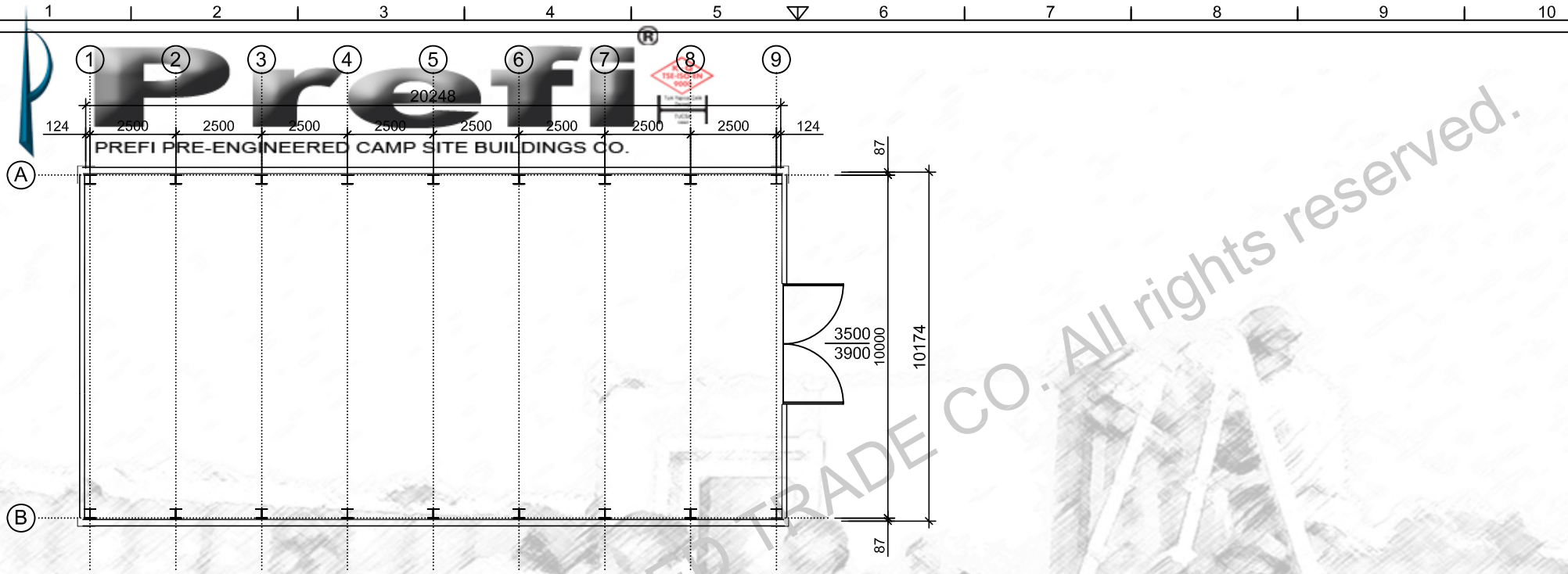
	SWITCH
	DOUBLE SWITCH
	1 X 40 TMS ARMATURE
	2 X 40 TMS ARMATURE
	LATERAL EARTH SOCKET
	TELEPHONE
	C TYPE GLOBE
	C TYPE GLOBE WITH WIRE GUARD
	4 x 18 PARABOLIC ARM.
	(220V)SURFACE MOUNTING FUSE BOX
K1	850 x 2000
K2	840 x 2000
K3	1760 x 2000
K4	740 x 2000
P1	800 x 1100
P2	600 x 400
ALL MEASURED IN MILLIMETERS	



- 0,50 mm. Trapezoidal Galvanized steel sheet
- Steel Purlin
- Rafter
- 50mm. 14 kg/m<sup>3</sup> Glasswool Insulation
- White Vinly Coated Gypsum Board



- External Surfaces 0.70 mm Thickness
- Coil-coated Painted
- PVC Film Coated Galvanize Steel.
- 50 mm 14 kg/m<sup>3</sup> Thickness Glasswool
- Box Profile And/Or Specially Formed Profiles
- Internal Wall Clad 8 mm. Thickness,
- Each Sides Are White-White Laminated Chipboard



**P r e f i**

PREFABRİK YAPI END. BİLİŞİM ve TİCARET LTD.ŞTİ.  
Ankara - İstanbul Karayolu, 30. km  
Akıncı Kavşağı, Kazan 06980 Ankara  
Tel: +90(312) 815 49 75(Pbx) Fax: +90(312) 815 49 78  
www.Prefi.com.tr e-posta: prefipref.com

ÇİZEN:  
DRAWN:

KONTROL:  
CHK:

ONAYLAMA:  
APPROVAL:

FİRMA /COMPANY:

**CAMP FOR 150 PERSON**

TARİH/DATE:

BAŞLIK /TITLE:

**WAREHOUSE**

REFERANS:

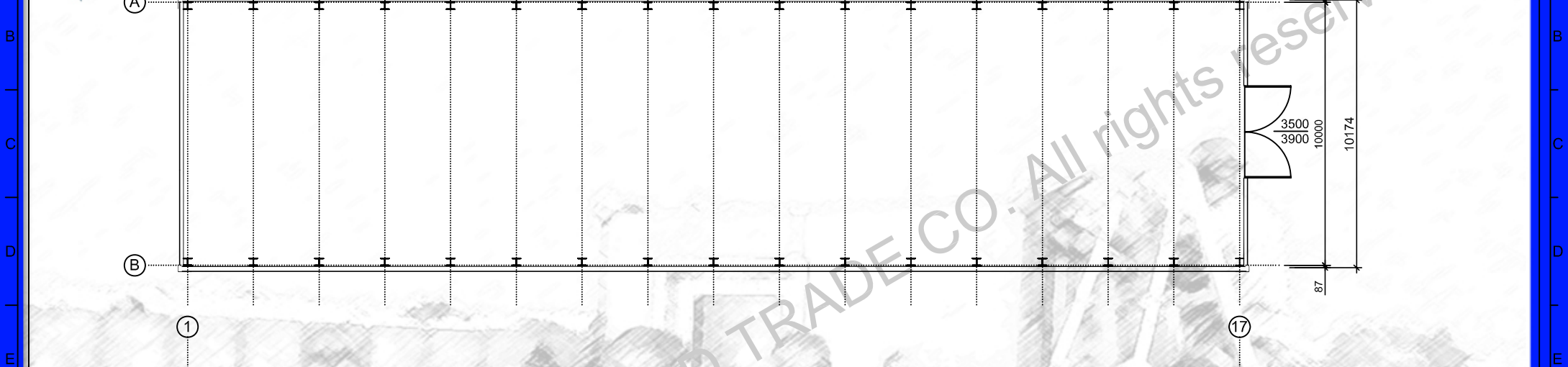
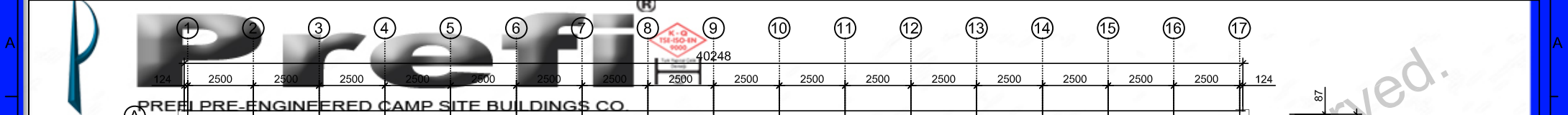
REV.NO:

SAYFA /PAGE:

2  
m

206.00

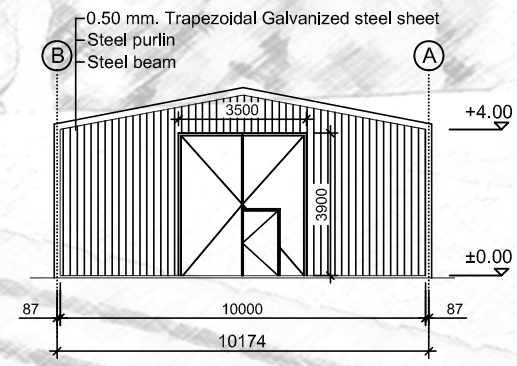
6/7



Trapezoidal Galvanized steel sheet  
0.50 mm, 27/200 form

Transparent Trapezoidal  
Sheet of 27/200 Form

Trapezoidal Galvanized steel sheet  
0.50 mm, 27/200 form



**P r e f i**

PREFABRIK YAPI END. BİLİŞİM ve TİCARET LTD.ŞTİ.  
Ankara - İstanbul Karayolu, 30. km  
Akıncı Kavşağı, Kazan 06980 Ankara  
Tel: +90(312) 815 49 75(Pbx) Fax: +90(312) 815 49 78  
www.Prefi.com.tr e-posta: prefipref.com

ÇİZEN:  
DRAWN:

KONTROL:  
CHK:

ONAYLAMA:  
APPROVAL:

FİRMA /COMPANY:  
**CAMP FOR 150 PERSON**

TARİH/DATE:

BAŞLIK /TITLE:  
**WAREHOUSE**

REFERANS:

REV.NO:

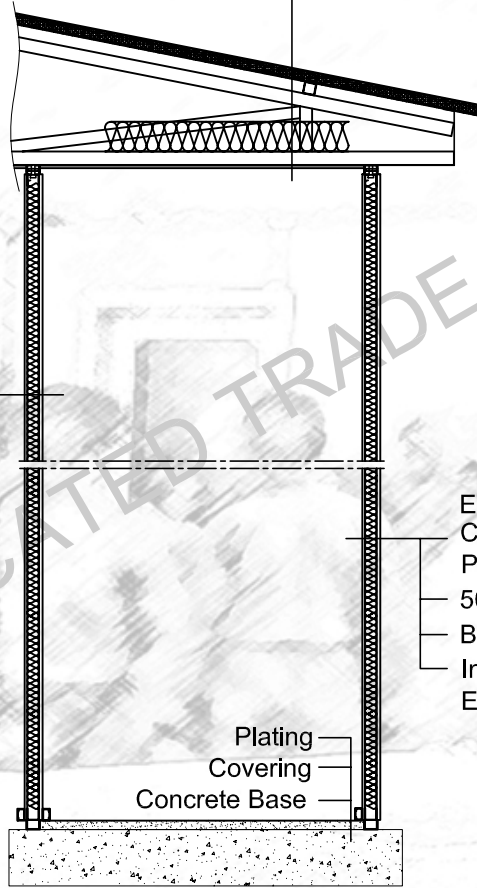
SAYFA /PAGE:  
7/7

2  
m<sup>2</sup>  
409.48



**Prefi**  
PREFI PRE-ENGINEERED CAMP SITE BUILDINGS CO.

0.50 mm. Trapezoidal Galvanized steel sheet  
Steel Purlin  
Rafter  
50mm. 14 kg/m<sup>3</sup> Glasswool Insulation  
White Vinyl Coated Gypsum Board



Internal Wall Clad 8 mm. Thickness Each Sides  
Are White-White Laminated Chipboard  
50 mm. 14 kg/m<sup>3</sup> Thickness Glasswool  
Box Profile And/Or Specially Formed Profiles  
Internal Wall Clad 8 mm. Thickness Each Sides  
Are White-White Laminated Chipboard

External Surfaces 0.70 mm Thickness  
Coil-coated Painted  
PVC Film Coated Galvanize Steel.  
50 mm. 14 kg/m<sup>3</sup> Thickness Glasswool  
Box Profile And/Or Specially Formed Profiles  
Internal Wall Clad 8 mm. Thickness  
Each Sides Are White-White Laminated Chipboard

Plating  
Covering  
Concrete Base

**Prefi**

PREFABRIK YAPI END. BİLİŞİM ve TİCARET LTD.ŞTİ.  
Ankara - İstanbul Karayolu, 30. km  
Akıncı Kavşağı, Kazan 06980 Ankara  
Tel: +90(312) 815 49 75(Pbx) Fax: +90(312) 815 49 78  
www.Prefi.com.tr e-posta: prefipref.com

ÇİZEN:  
DRAWN:

KONTROL:  
CHK:

ONAYLAMA:  
APPROVAL:

FİRMA /COMPANY:

TARİH/DATE:

BAŞLIK /TITLE:

PANEL DETAIL

GLV SLAM

m<sup>2</sup>

REFERANS:

REV.NO:

SAYFA /PAGE:



**Pre fi**  
 PREFI PRE-ENGINEERED CAMP SITE BUILDINGS CO.



DOUBLE SIDE WHITE/WHITE LAMINATED CHIPBOARD  
 40x40 BOX PROFILE GLASSWOOL INSULATION  
 50 mm (14 kg/m<sup>3</sup> DENSITY)  
 COIL-COATED (RAL 9002)  
 GALVANIZED STEEL PLATE

ROOF TRUSS  
 CONNECTION PROFILE  
 M10 BOLT/NUT (8.8)

A  
 ←

A VIEW

**Pre fi**

PREFİ PREFABRİK YAPI END. BİLİŞİM ve TİCARET LTD.ŞTİ.  
 Ankara - İstanbul Karayolu, 30. km  
 Kazan 06980 Ankara/TURKEY  
 Tel:90(312) 815 49 75(Pbx) Fax:90(312) 815 49 78  
 www.Prefi.com.tr e-posta: prefi@prefi.com.tr

DRAWN:  
 CHK:  
 ONAYLAMA:  
 APPROVAL: H. VAKUR YILMAZYİĞİT

FİRMA /COMPANY:  
 TARİH/DATE:

BASLIK /TITLE:	DETAIL OF PANEL CONNECTION	2 m
	GLV-SLAM	
REFERANS:	REV.NO:	SAYFA /PAGE: