

**Prefi**

PREFABRİK YAPI END. BİLİŞİM ve TİCARET LTD.ŞTİ.  
 Ankara - İstanbul Karayolu, 30. km  
 Akıncı Kavşağı, Kazan 06980 Ankara  
 Tel:90(312) 815 49 75(Pbx) Fax:90(312) 815 49 78  
 www.Prefi.com.tr e-posta: prefipref.com

ÇİZEN:  
 DRAWN:

KONTROL:  
 CHK:

ONAYLAMA:  
 APPROVAL:

FİRMA /COMPANY:

**CAMP FOR 500 PERSON**

TARİH/DATE:

BASLIK /TITLE:

**CAMP CENTRE OF POPULATION**

REFERANS:

REV.NO:

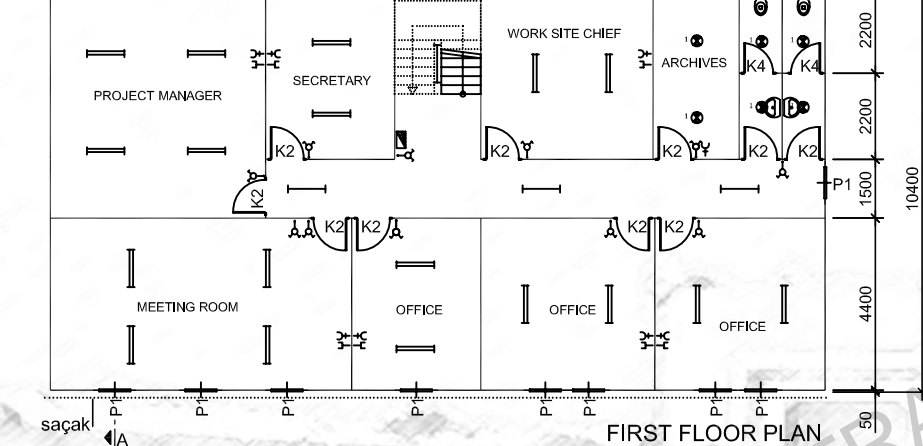
SAYFA /PAGE:

m<sup>2</sup>

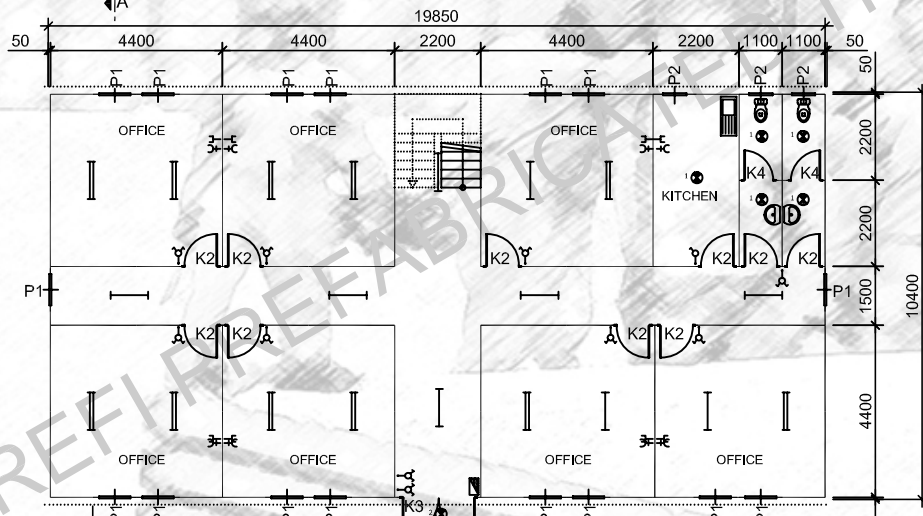
# Profifi



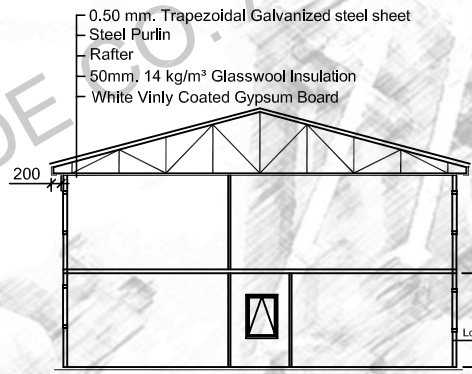
PREFABRİK ENJENERED CAMP SITE BUILDINGS



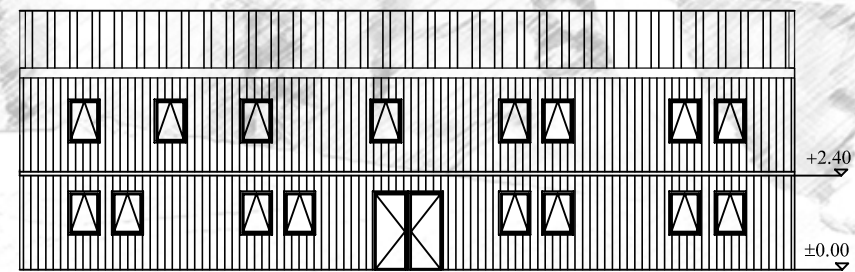
FIRST FLOOR PLAN



GROUND FLOOR PLAN



A-A SECTION



VIEW

	SWITCH
	DOUBLE SWITCH
	1 X 40 TMS ARMATURE
	2 X 40 TMS ARMATURE
	LATERAL EARTH SOCKET
	TELEPHONE
	C TYPE GLOBE
	C TYPE GLOBE WITH WIRE GUARD
	4 X 18 PARABOLIC ARM
	220V SURFACE MOUNTING FUSE BOX
	K1 850 x 2000
	K2 840 x 2000
	K3 1760 x 2000
	K4 740 x 2000
	P1 800 x 1100
	P2 600 x 400
ALL MEASURED IN MILLIMETERS	

0.50 mm. Trapezoidal Galvanized steel sheet  
Steel Purlin  
Rafter  
50mm. 14 kg/m<sup>3</sup> Glasswool Insulation  
White Vinly Coated Gypsum Board

External Surfaces 0.70 mm Thickness  
Coil-coated Painted  
PVC Film Coated Galvanize Steel.  
50 mm 14 kg/m<sup>3</sup> Thickness Glasswool  
Box Profile And/Or Specially Formed Profiles  
Internal Wall Clad 8 mm. Thickness.  
Each Sides Are White-White Laminated Chipboard

## Profifi

PREFABRİK YAPI END. BİLİŞİM ve TİCARET LTD.ŞTİ.  
Ankara - İstanbul Karayolu, 30. km  
Akıncı Kavşağı, Kazan 06980 Ankara  
Tel:90(312) 815 49 75(Pbx) Fax:90(312) 815 49 78  
www.Prefi.com.tr e-posta: prefipref.com

ÇİZEN:  
DRAWN:  
KONTROL:  
CHK:  
ONAYLAMA:  
APPROVAL: **H. VAKUR YILMAZYİĞİT**

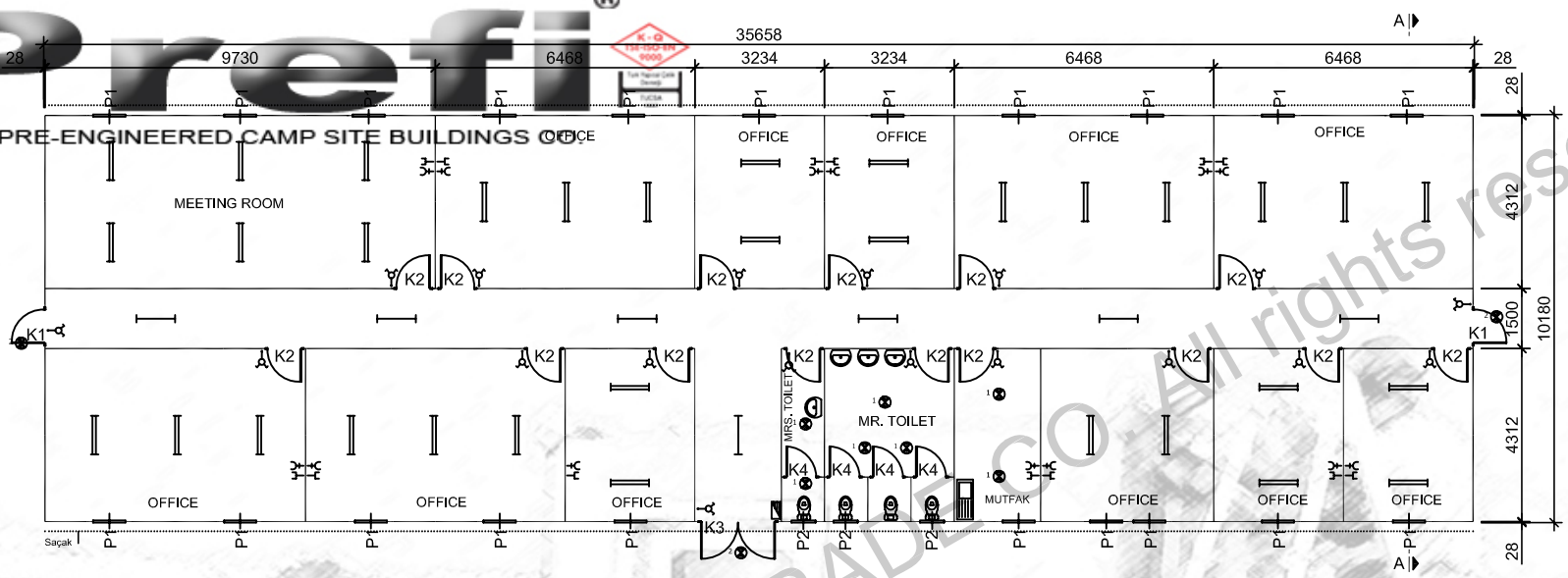
FİRMA / COMPANY:  
**CAMP FOR 500 PERSON**  
TARİH/DATE:

BAŞLIK / TITLE:  
**MANAGERIAL OFFICE BUILDING**  
**GLV-SLAM**  
REFERANS:  
REV.NO:  
SAYFA / PAGE:

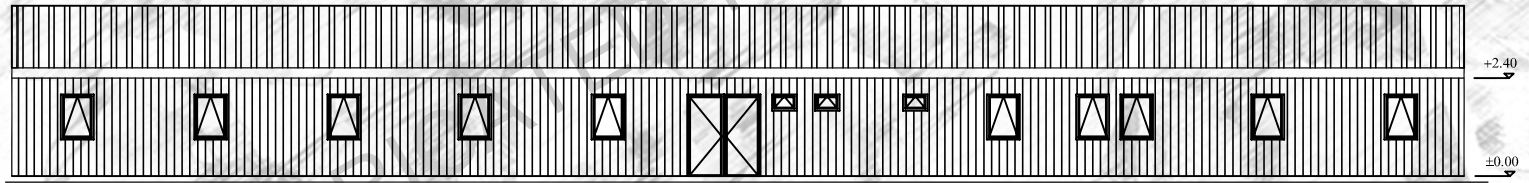
2  
m<sup>2</sup>  
412.88  
1/17

# Prefi

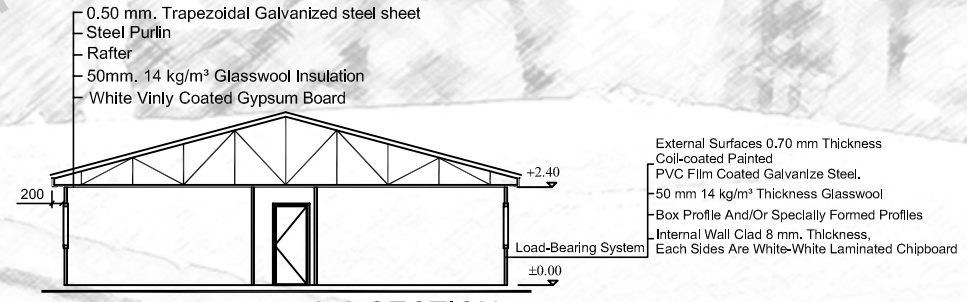
PREFI PRE-ENGINEERED CAMP SITE BUILDINGS



PLAN



VIEW



A-A SECTION

- 0.50 mm. Trapezoidal Galvanized steel sheet
- Steel Purlin
- Rafter
- 50mm. 14 kg/m<sup>3</sup> Glasswool Insulation
- White Vinly Coated Gypsum Board

- External Surfaces 0.70 mm Thickness
- Coil-coated Painted
- PVC Film Coated Galvanize Steel.
- 50 mm 14 kg/m<sup>3</sup> Thickness Glasswool
- Box Profile And/Or Specially Formed Profiles
- Internal Wall Clad 8 mm. Thickness.
- Each Sides Are White-White Laminated Chipboard

⊖	SWITCH
⊖	DOUBLE SWITCH
— —	1 X 40 TMS ARMATURE
— —	2 X 40 TMS ARMATURE
⊕	LATERAL EARTH SOCKET
☎	TELEPHONE
⊙	C TYPE GLOBE
⊙	C TYPE GLOBE WITH WIRE GUARD
⊙	4 x 18 PARABOLIC ARM.
⊙	(220V)/SURFACE MOUNTING FUSE BOX
K1	850 x 2000
K2	840 x 2000
K3	1760 x 2000
K4	740 x 2000
P1	800 x 1100
P2	800 x 400
ALL MEASURED IN MILLIMETERS	

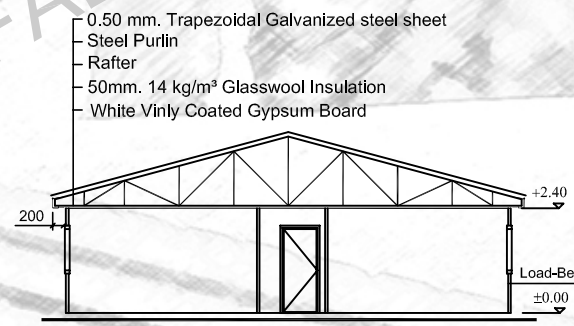
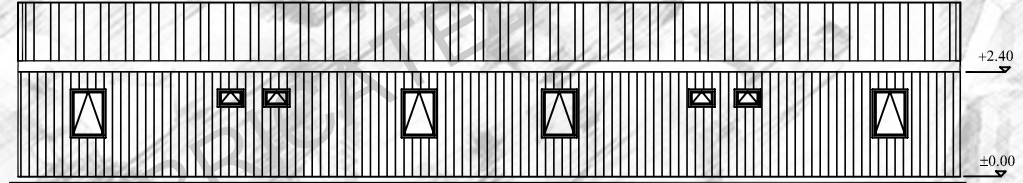
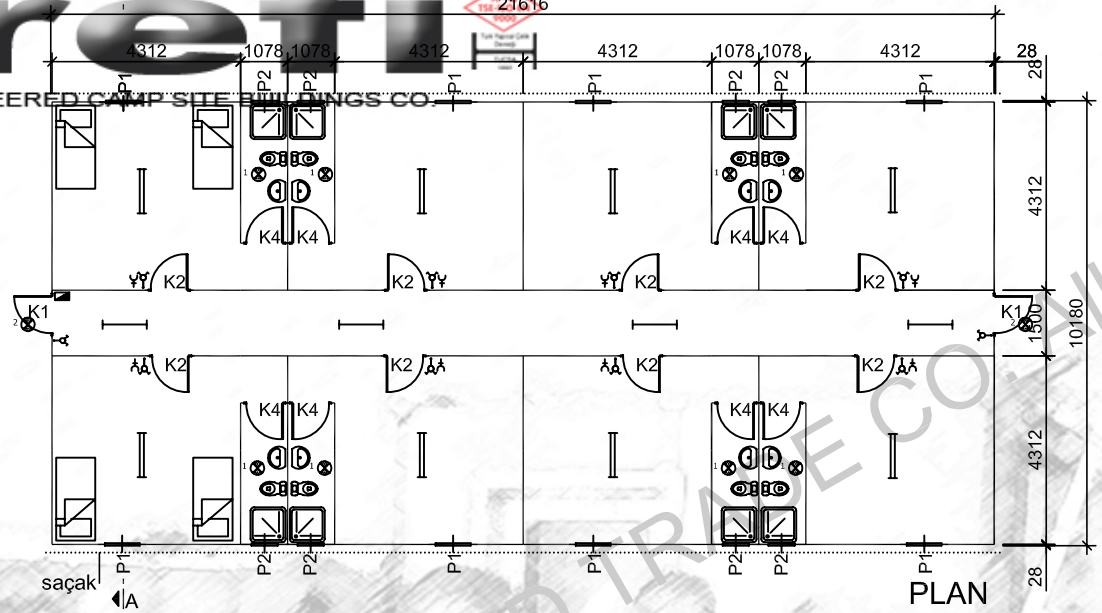
**Prefi**  
 PREFABRIK YAPI END. BİLİŞİM ve TİCARET LTD.ŞTİ.  
 Ankara - İstanbul Karayolu, 30. km  
 Akıncı Kavşağı, Kazan 06980 Ankara  
 Tel:90(312) 815 49 75(Pbx) Fax:90(312) 815 49 78  
 www.Prefi.com.tr e-posta: prefipref.com

ÇİZEN:  
 DRAWN:  
 KONTROL:  
 CHK:  
 ONAYLAMA:  
 APPROVAL: H.VAKUR YILMAZYİĞİT

FİRMA /COMPANY:  
**CAMP FOR 500 PERSON**  
 TARİH/DATE:

BASLIK /TITLE:	<b>TECNICAL OFFICE BUILDING</b>	<b>2<sup>m</sup></b>
	<b>GLV-SLAM</b>	<b>362.99</b>
REFERANS:	REV.NO:	SAYFA /PAGE:
		<b>2/17</b>

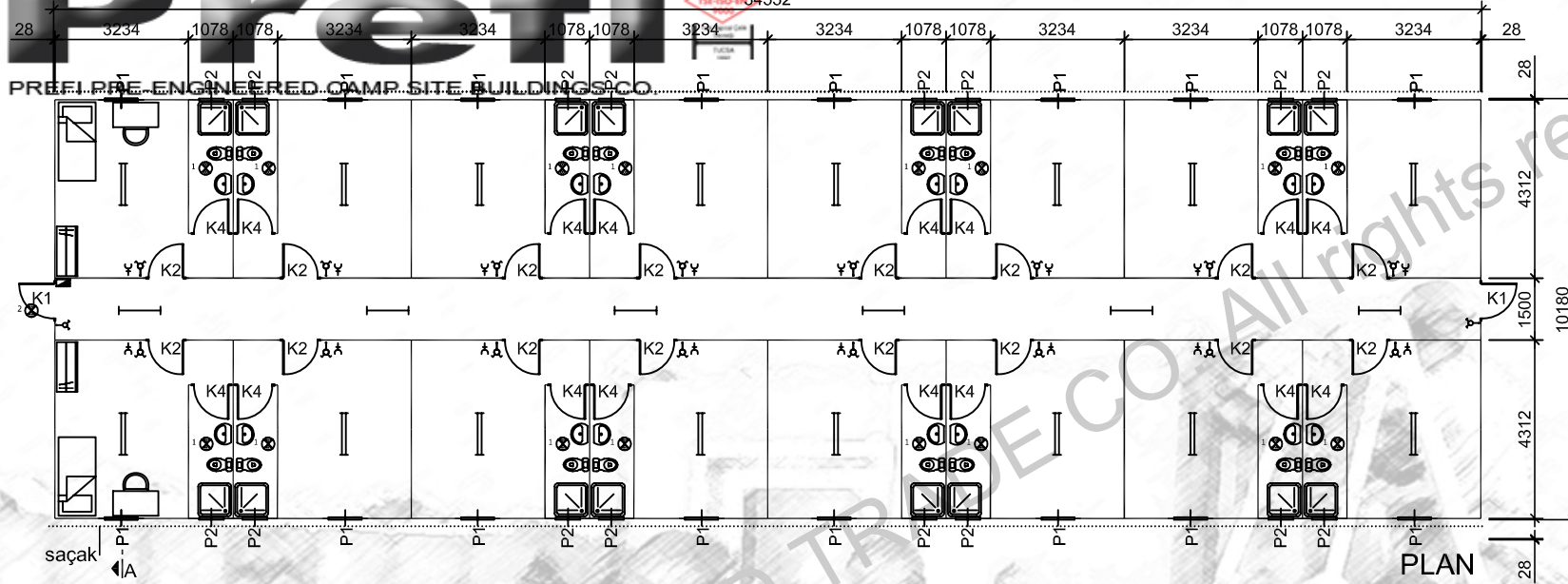
	SWITCH
	DOUBLE SWITCH
	1 X 40 TMS ARMATURE
	2 X 40 TMS ARMATURE
	LATERAL EARTH SOCKET
	TELEPHONE
	C TYPE GLOBE
	C TYPE GLOBE WITH WIRE GUARD
	4 X 18 PARABOLIC ARM
	(220V) SURFACE MOUNTING FUSE BOX
K1	850 x 2000
K2	840 x 2000
K3	1760 x 2000
K4	740 x 2000
P1	800 x 1100
P2	600 x 400
ALL MEASURED IN MILLIMETERS	



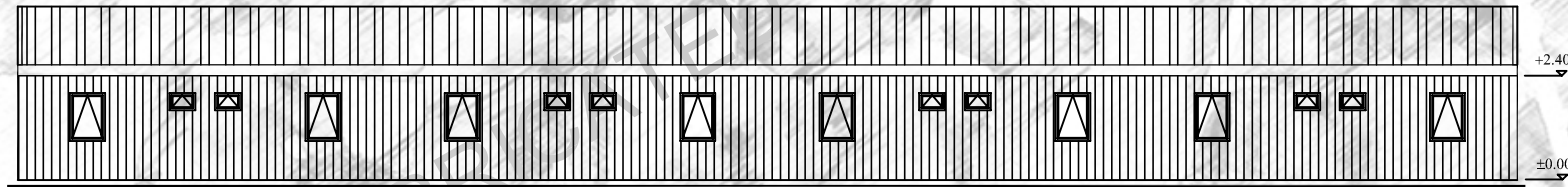
- 0.50 mm. Trapezoidal Galvanized steel sheet
- Steel Purlin
- Rafter
- 50mm. 14 kg/m<sup>3</sup> Glasswool Insulation
- White Vinly Coated Gypsum Board

- External Surfaces 0.70 mm Thickness
- Coil-coated Painted
- PVC Film Coated Galvanize Steel.
- 50 mm 14 kg/m<sup>3</sup> Thickness Glasswool
- Box Profile And/Or Specially Formed Profiles
- Internal Wall Clad 8 mm. Thickness,
- Each Sides Are White-White Laminated Chipboard

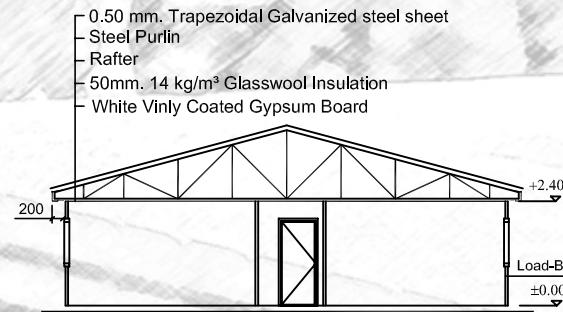
A-A SECTION



PLAN



VIEW



A-A SECTION

External Surfaces 0.70 mm Thickness  
 Coil-coated Painted  
 PVC Film Coated Galvanize Steel.  
 -50 mm 14 kg/m<sup>3</sup> Thickness Glasswool  
 -Box Profile And/Or Specially Formed Profiles  
 Internal Wall Clad 8 mm. Thickness.  
 Each Sides Are White-White Laminated Chipboard

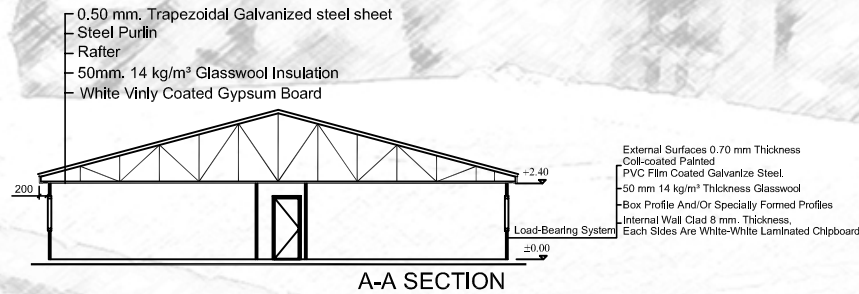
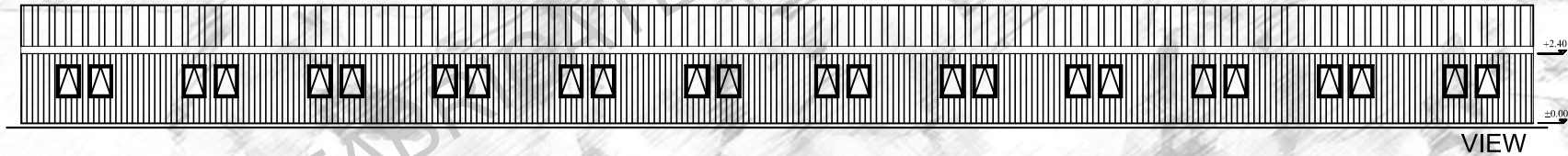
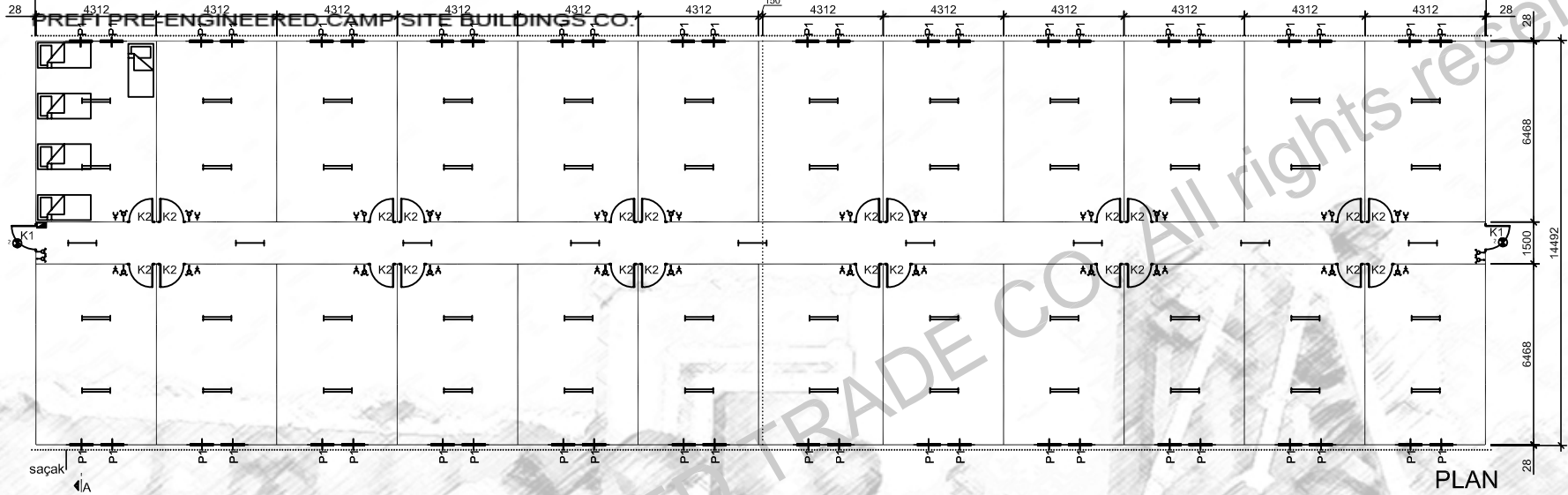
	SWITCH
	DOUBLE SWITCH
	1 X 40 TMS ARMATURE
	2 X 40 TMS ARMATURE
	LATERAL EARTH SOCKET
	TELEPHONE
	C TYPE GLOBE
	C TYPE GLOBE WITH WIRE GUARD
	4 x 18 PARABOLIC ARM.
	(220V) SURFACE MOUNTING FUSE BOX
K1	850 x 2000
K2	840 x 2000
K3	1760 x 2000
K4	740 x 2000
P1	800 x 1100
P2	600 x 400
ALL MEASURED IN MILLIMETERS	

2 UNIT

# Prefi



51950



	SWITCH
	DOUBLE SWITCH
	1 X 40 TMS ARMATURE
	2 X 40 TMS ARMATURE
	LATERAL EARTH SOCKET
	TELEPHONE
	C TYPE GLOBE
	C TYPE GLOBE WITH WIRE GUARD
	4 x 18 PARABOLIC ARM
	220V SURFACE MOUNTING FUSE BOX
	K1 850 x 2000
	K2 840 x 2000
	K3 1760 x 2000
	K4 740 x 2000
	P1 800 x 1100
	P2 600 x 400
ALL MEASURED IN MILLIMETERS	

# Prefi

PREFABRİK YAPI END. BİLİŞİM ve TİCARET LTD.ŞTİ.  
Ankara - İstanbul Karayolu, 30. km  
Akıncı Kavşağı, Kazan 06980 Ankara  
Tel:90(312) 815 49 75(Pbx) Fax:90(312) 815 49 78  
www.Prefi.com.tr e-posta: prefipref.com

ÇİZEN:  
DRAWN:

KONTROL:  
CHK:

ONAYLAMA:  
APPROVAL: H.VAKUR YILMAZYİĞİT

FİRMA / COMPANY:

CAMP FOR 500 PERSON

TARİH/DATE:

BASLIK / TITLE:

WORKER DORMITORY BUILDING (FOR 240 PERSON)

REFERANS:

REV.NO:

GLV-SLAM ( ALTENATIVE - 1 )

SAYFA / PAGE:

5/17

2  
m

752.85

5/17

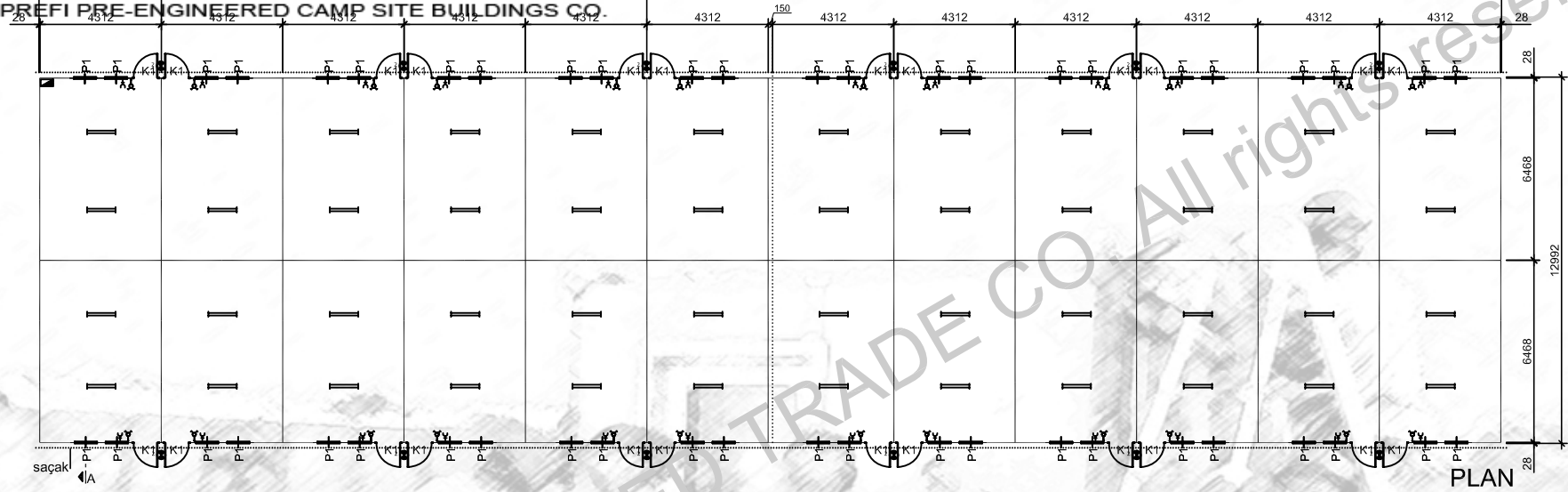
2 UNIT

# Prefi

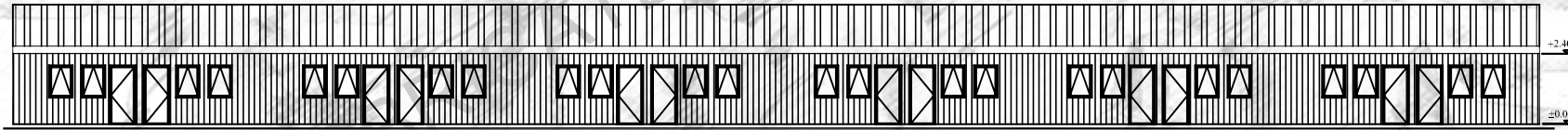


PREFI PRE-ENGINEERED CAMP SITE BUILDINGS CO.

51950

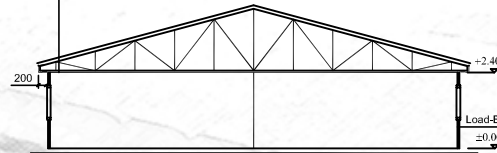


PLAN



VIEW

- 0.50 mm. Trapezoidal Galvanized steel sheet
- Steel Purlin
- Rafter
- 50mm. 14 kg/m<sup>3</sup> Glasswool Insulation
- White Vinly Coated Gypsum Board



A-A SECTION

- External Surfaces 0.70 mm Thickness Coll-coated Painted
- PVC Film Coated Galvanize Steel.
- 50 mm 14 kg/m<sup>3</sup> Thickness Glasswool
- Box Profile And/Or Specially Formed Profiles
- Internal Wall Clad 8 mm. Thickness.
- Each Sides Are White-White Laminated Chipboard

	SWITCH
	DOUBLE SWITCH
	1 X 40 TMS ARMATURE
	2 X 40 TMS ARMATURE
	LATERAL EARTH SOCKET
	TELEPHONE
	C TYPE GLOBE
	C TYPE GLOBE WITH WIRE GUARD
	4 x 18 PARABOLIC ARM.
	220V SURFACE MOUNTING FUSE BOX
	K1 850 x 2000
	K2 840 x 2000
	K3 1760 x 2000
	K4 740 x 2000
	P1 800 x 1100
	P2 600 x 400
ALL MEASURED IN MILLIMETERS	

# Prefi

PREFABRIK YAPI END. BİLİŞİM ve TİCARET LTD.ŞTİ.  
Ankara - İstanbul Karayolu, 30. km  
Akıncı Kavşağı, Kazan 06980 Ankara  
Tel:90(312) 815 49 75(Pbx) Fax:90(312) 815 49 78  
www.Prefi.com.tr e-posta: prefipref.com

ÇİZEN:  
DRAWN:

KONTROL:  
CHK:

ONAYLAMA:  
APPROVAL: H.VAKUR YILMAZYİĞİT

FİRMA /COMPANY:

CAMP FOR 500 PERSON

TARİH/DATE:

BASLIK /TITLE:

WORKER DORMITORY BUILDING (FOR 240 PERSON)

GLV-SLAM ( ALTERNATIVE - 2 )

REFERANS:

REV.NO:

SAYFA /PAGE:

2  
m

674.93

6/17

F.MI.06/B

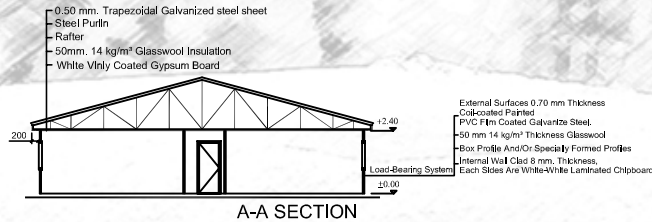
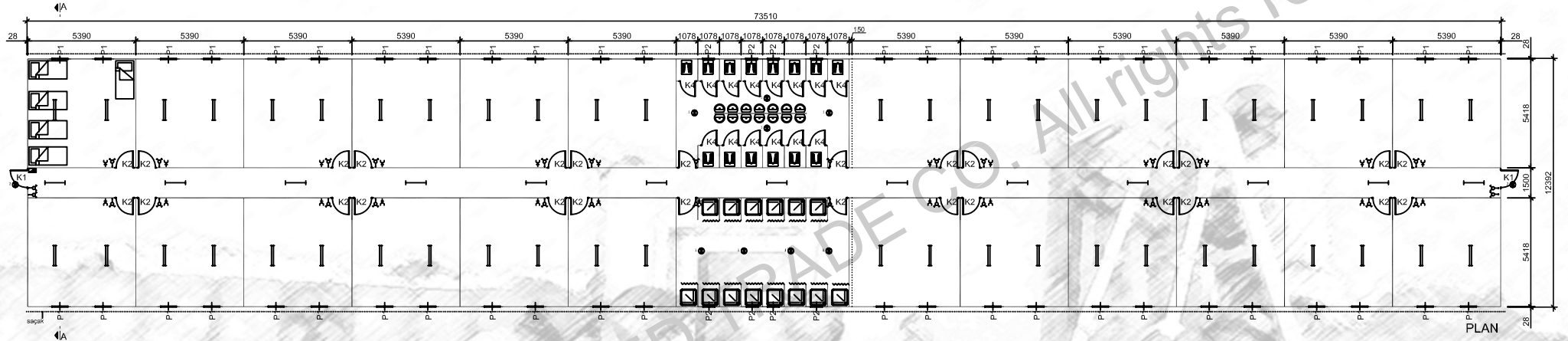
YAYIN TARİHİ : 01/08/2001

REVİZYON TARİHİ : 07/03/2007

2 UNIT

# Prefi

PREFI PRE-ENGINEERED CAMP SITE BUILDINGS CO.



	SWITCH
	DOUBLE SWITCH
	1 X 40 TMS ARMATURE
	2 X 40 TMS ARMATURE
	LATERAL EARTH SOCKET
	TELEPHONE
	C TYPE GLOBE
	C TYPE GLOBE WITH WIRE GUARD
	4 X 18 PARABOLIC ARM
	220V SURFACE MOUNTING FUSE BOX
K1	850 x 2000
K2	840 x 2000
K3	1760 x 2000
K4	740 x 2000
P1	800 x 1100
P2	600 x 400
ALL MEASURED IN MILLIMETERS	

# Prefi

PREFABRİK YAPI END. BİLİŞİM ve TİCARET LTD.ŞTİ.  
Ankara - İstanbul Karayolu, 30. km  
Akıncı Kavşağı, Kazan 06980 Ankara  
Tel:90(312) 815 49 75(Pbx) Fax:90(312) 815 49 78  
www.Prefi.com.tr e-posta: prefipref.com

ÇİZEN:  
DRAWN:

KONTROL:  
CHK:

ONAYLAMA:  
APPROVAL: H.VAKUR YILMAZYİĞİT

FİRMA /COMPANY:

CAMP FOR 500 PERSON

TARİH/DATE:

BASLIK /TITLE:

WORKER DORMITORY BUILDING (FOR 240 PERSON)

GLV-SLAM(ALTERNATIVE-3)

REFERANS:

REV.NO:

SAYFA /PAGE:

2  
m

910.93

7/17

F.MI.06/B

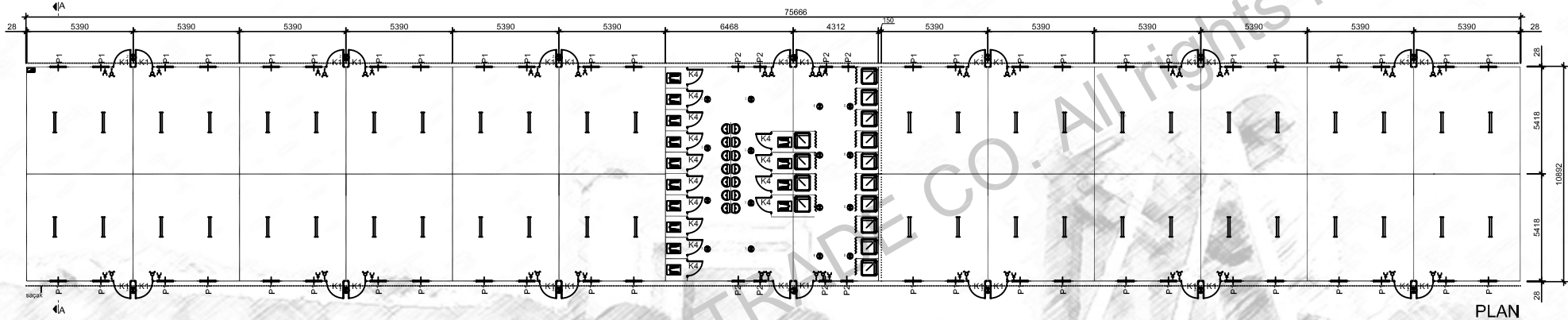
YAYIN TARİHİ : 01/08/2001

REVİZYON TARİHİ : 07/03/2007

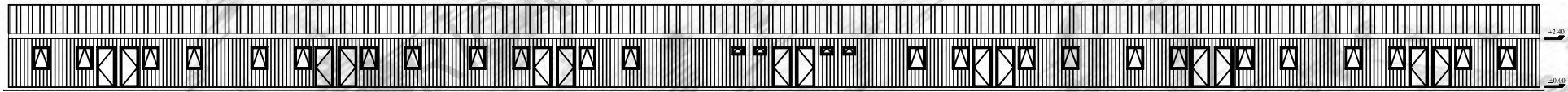
2 UNIT

# Prefi

PREFI PRE-ENGINEERED CAMP SITE BUILDINGS CO.

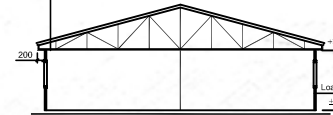


PLAN



VIEW

- 0.50 mm. Trapezoidal Galvanized steel sheet
- Steel Purlin
- Rafter
- 50mm, 14 kg/m<sup>3</sup> Glasswool Insulation
- White Vinyl Coated Gypsum Board



A-A SECTION

- External Surfaces 0.70 mm Thickness
- Colt-coated Painted
- PVC Film Coated Galvanne Steel.
- 50 mm 14 kg/m<sup>3</sup> Thickness Glasswool
- Box Profile And/or Specially Formed Profiles
- External Wall Clad 8 mm. Thickness.
- Each Glass Are White-White Laminated Chipboard

SWITCH
DOUBLE SWITCH
1 X 40 TMS ARMATURE
2 X 40 TMS ARMATURE
LATERAL EARTH SOCKET
TELEPHONE
C TYPE GLOBE
C TYPE GLOBE WITH WIRE GUARD
4 x 18 PARABOLIC ARMA
220V SURFACE MOUNTING FUSE BOX
K1 850 x 2000
K2 840 x 2000
K3 1750 x 2000
K4 1400 x 2000
P1 850 x 1100
P2 650 x 400
ALL MEASURED IN METERS

# Prefi

PREFABRİK YAPI END. BİLİŞİM ve TİCARET LTD.ŞTİ.  
Ankara - İstanbul Karayolu, 30. km  
Akıncı Kavşağı, Kazan 06980 Ankara  
Tel:90(312) 815 49 75(Pbx) Fax:90(312) 815 49 78  
www.Prefi.com.tr e-posta: prefipref.com

ÇİZEN:  
DRAWN:

KONTROL:  
CHK:

ONAYLAMA:  
APPROVAL: H.VAKUR YILMAZYİĞİT

FİRMA / COMPANY:

CAMP FOR 500 PERSON

TARİH/DATE:

BASLIK / TITLE:

WORKER DORMITORY BUILDING (FOR 240 PERSON)

GLV-SLAM ( ALTERNATIVE - 4 )

REFERANS:

REV.NO:

SAYFA / PAGE:

2

824.15

8/17

F.MI.06/B

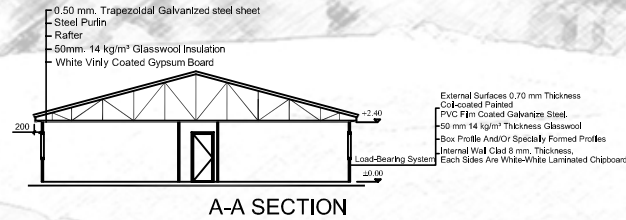
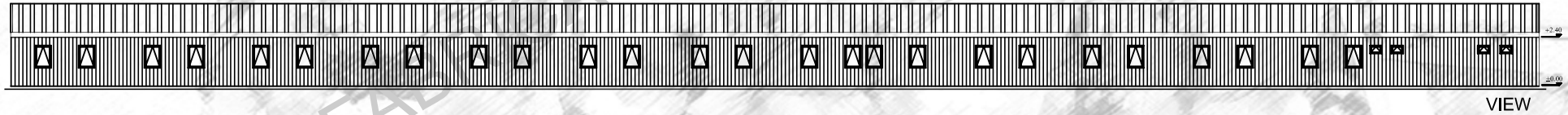
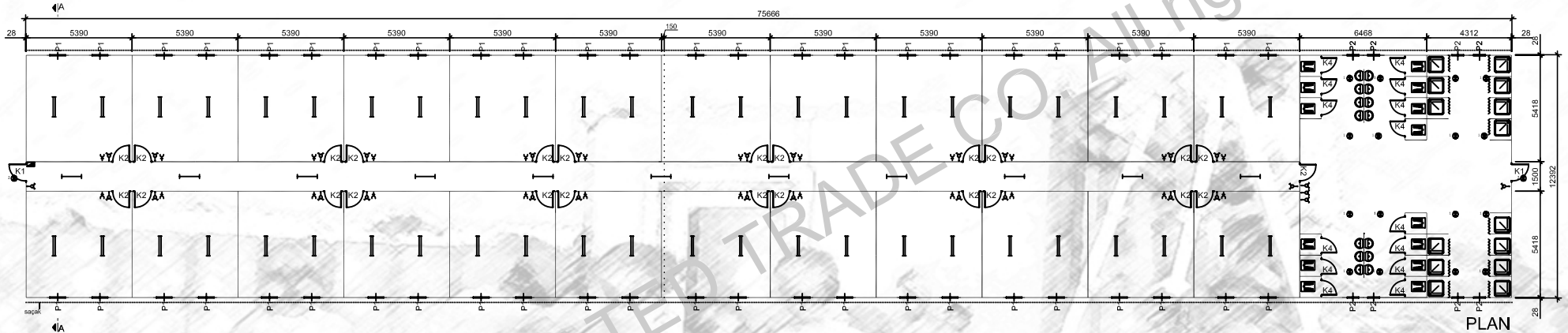
YAYIN TARİHİ : 01/08/2001

REVİZYON TARİHİ : 07/03/2007

2 UNIT

# Prefi

PREFI PRE-ENGINEERED CAMP SITE BUILDINGS CO.



A-A SECTION

SWITCH
DOUBLE SWITCH
1 X 40 TMS ARMATURE
2 X 40 TMS ARMATURE
LATERAL EARTH SOCKET
TELEPHONE
C TYPE GLOBE
C TYPE GLOBE WITH WIRE GUARD
4 x 18 PARABOLIC ARMA
220V SURFACE MOUNTING FUSE BOX
K1 850 x 2000
K2 840 x 2000
K3 1750 x 2000
K4 1500 x 2000
P1 850 x 1100
P2 650 x 400
ALL MEASURED IN MILLIMETERS

# Prefi

PREFABRIK YAPI END. BİLİŞİM ve TİCARET LTD.ŞTİ.  
Ankara - İstanbul Karayolu, 30. km  
Akıncı Kavşağı, Kazan 06980 Ankara  
Tel:90(312) 815 49 75(Pbx) Fax:90(312) 815 49 78  
www.Prefi.com.tr e-posta: prefipref.com

ÇİZEN:  
DRAWN:

KONTROL:  
CHK:

ONAYLAMA:  
APPROVAL: H.VAKUR YILMAZYİĞİT

FİRMA / COMPANY:

CAMP FOR 500 PERSON

TARİH/DATE:

BASLIK / TITLE:

WORKER DORMITORY BUILDING (FOR 240 PERSON)

REFERANS:

REV.NO:

SAYFA / PAGE:

2

937.65

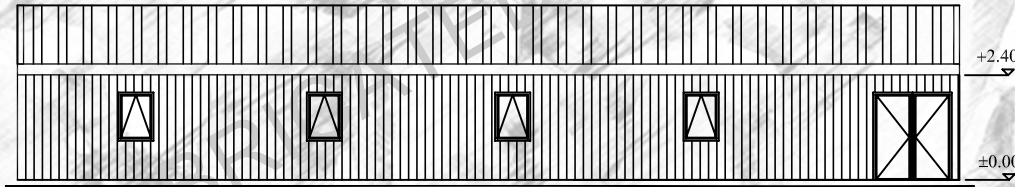
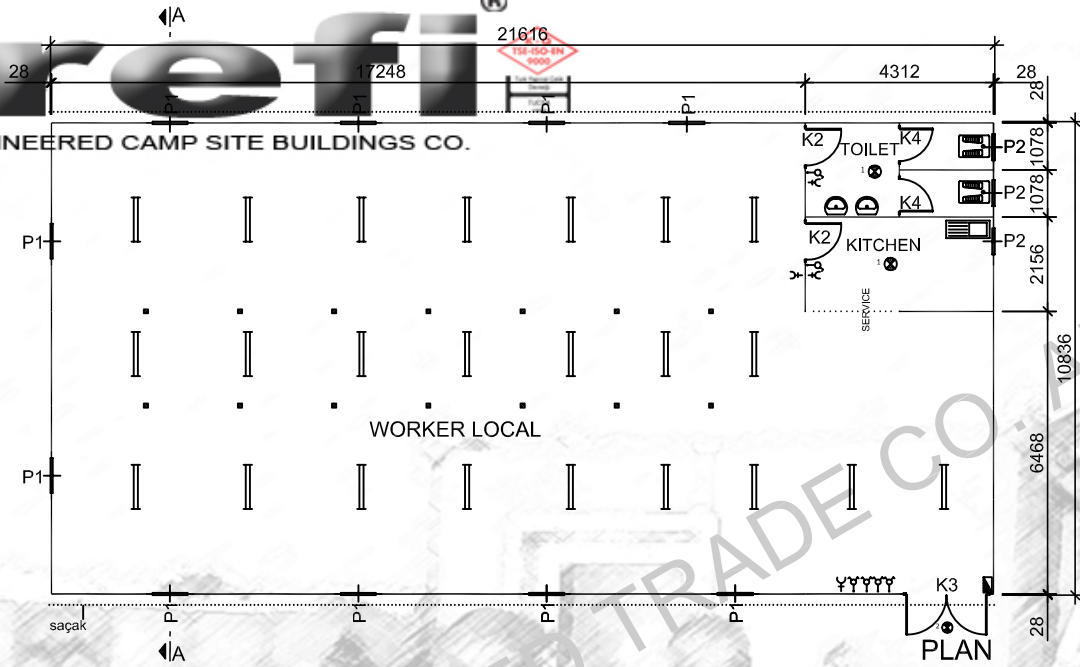
9/17

F.MI.06/B

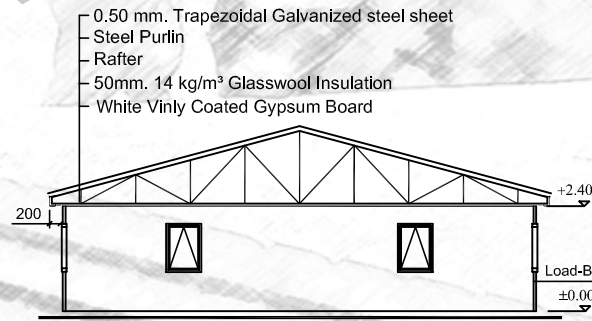
YAYIN TARİHİ : 01/08/2001

REVİZYON TARİHİ : 07/03/2007





VIEW



A-A SECTION

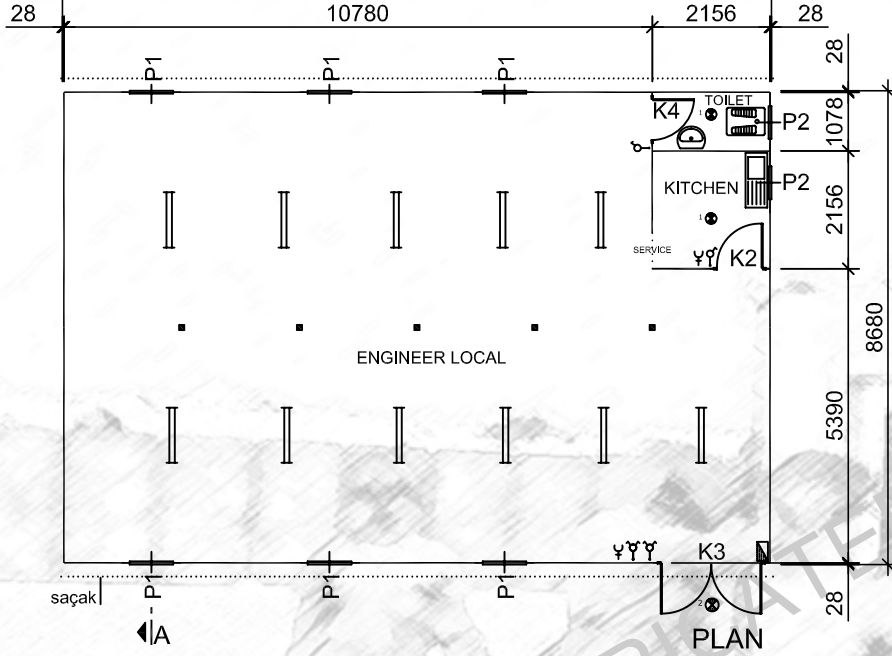
External Surfaces 0.70 mm Thickness  
 Coil-coated Painted  
 PVC Film Coated Galvanize Steel.  
 -50 mm 14 kg/m<sup>3</sup> Thickness Glasswool  
 -Box Profile And/Or Specially Formed Profiles  
 Internal Wall Clad 8 mm. Thickness.  
 Each Sides Are White-White Laminated Chipboard

	SWITCH
	DOUBLE SWITCH
	1 X 40 TMS ARMATURE
	2 X 40 TMS ARMATURE
	LATERAL EARTH SOCKET
	TELEPHONE
	C TYPE GLOBE
	C TYPE GLOBE WITH WIRE GUARD
	4 x 18 PARABOLIC ARM.
	(220V) SURFACE MOUNTING FUSE BOX
K1	850 x 2000
K2	840 x 2000
K3	1760 x 2000
K4	740 x 2000
P1	800 x 1100
P2	600 x 400
ALL MEASURED IN MILLIMETERS	

# Prefi

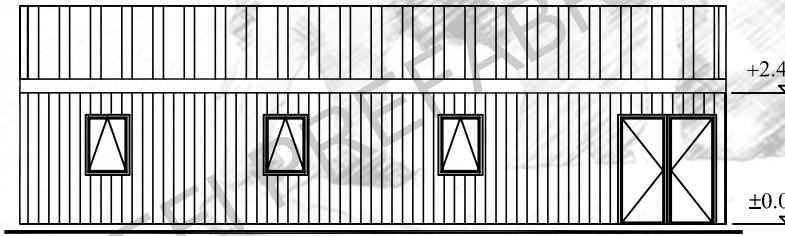


PREFI PRE-ENGINEERED CAMP SITE BUILDINGS CO.

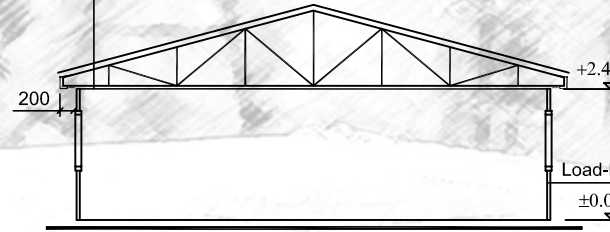


PLAN

0.50 mm. Trapezoidal Galvanized steel sheet  
Steel Purlin  
Rafter  
50mm. 14 kg/m<sup>3</sup> Glasswool Insulation  
White Vinly Coated Gypsum Board



VIEW



A-A SECTION

External Surfaces 0.70 mm Thickness  
Coil-coated Painted  
PVC Film Coated Galvanize Steel.  
50 mm 14 kg/m<sup>3</sup> Thickness Glasswool  
Box Profile And/Or Specially Formed Profiles  
Internal Wall Clad 8 mm. Thickness,  
Each Sides Are White-White Laminated Chipboard

	SWITCH
	DOUBLE SWITCH
	1 X 40 TMS ARMATURE
	2 X 40 TMS ARMATURE
	LATERAL EARTH SOCKET
	TELEPHONE
	C TYPE GLOBE
	C TYPE GLOBE WITH WIRE GUARD
	4 x 18 PARABOLIC ARM
	(220V) SURFACE MOUNTING FUSE BOX
	K1 850 x 2000
	K2 840 x 2000
	K3 1760 x 2000
	K4 740 x 2000
	P1 800 x 1100
	P2 600 x 400
ALL MEASURED IN MILLIMETERS	

## Prefi

PREFABRIK YAPI END. BİLİŞİM ve TİCARET LTD.ŞTİ.  
Ankara - İstanbul Karayolu, 30. km  
Akıncı Kavşağı, Kazan 06980 Ankara  
Tel:90(312) 815 49 75(Pbx) Fax:90(312) 815 49 78  
www.Prefi.com.tr e-posta: prefiprefi.com

ÇİZEN:  
DRAWN:

KONTROL:  
CHK:

ONAYLAMA:  
APPROVAL: H. VAKUR YILMAZYİĞİT

FİRMA /COMPANY:

CAMP FOR 500 PERSON

TARİH/DATE:

BAŞLIK /TITLE:

MÜHENDİS LOKAL BİNASI

(GLV-SLAM)

REFERANS:

REV.NO:

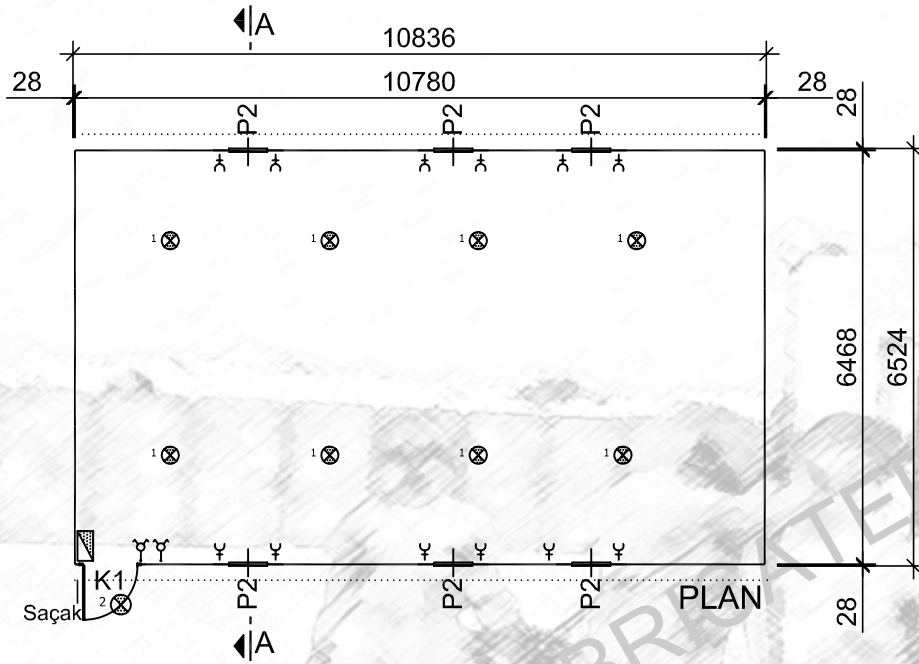
SAYFA /PAGE:

2  
m

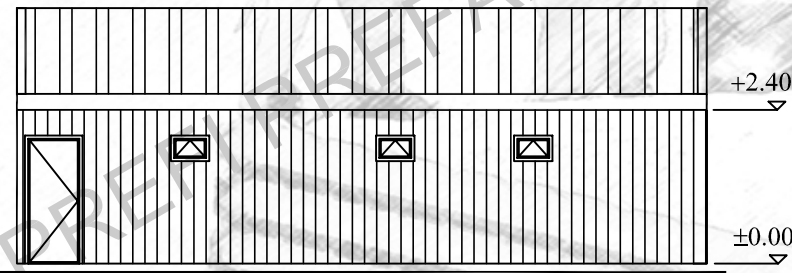
112.77

12/17

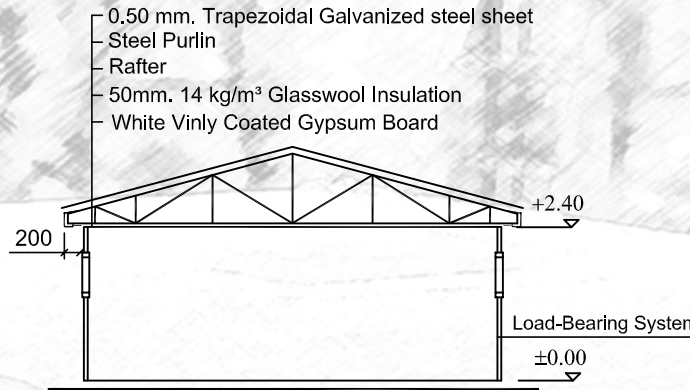
	SWITCH
	DOUBLE SWITCH
	1 X 40 TMS ARMATURE
	2 X 40 TMS ARMATURE
	LATERAL EARTH SOCKET
	TELEPHONE
	C TYPE GLOBE
	C TYPE GLOBE WITH WIRE GUARD
	4 x 18 PARABOLIC ARM.
	(220V) SURFACE MOUNTING FUSE BOX
K1	850 x 2000
K2	840 x 2000
K3	1760 x 2000
K4	740 x 2000
P1	800 x 1100
P2	600 x 400
ALL MEASURED IN MILLIMETERS	



PLAN



VIEW



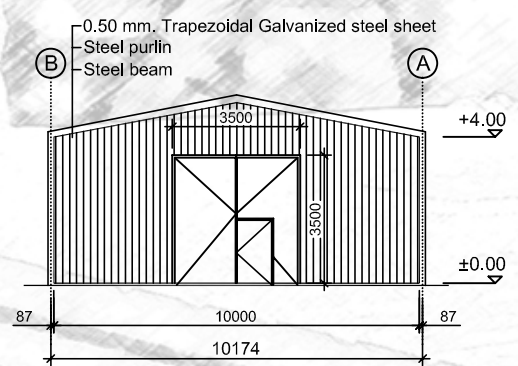
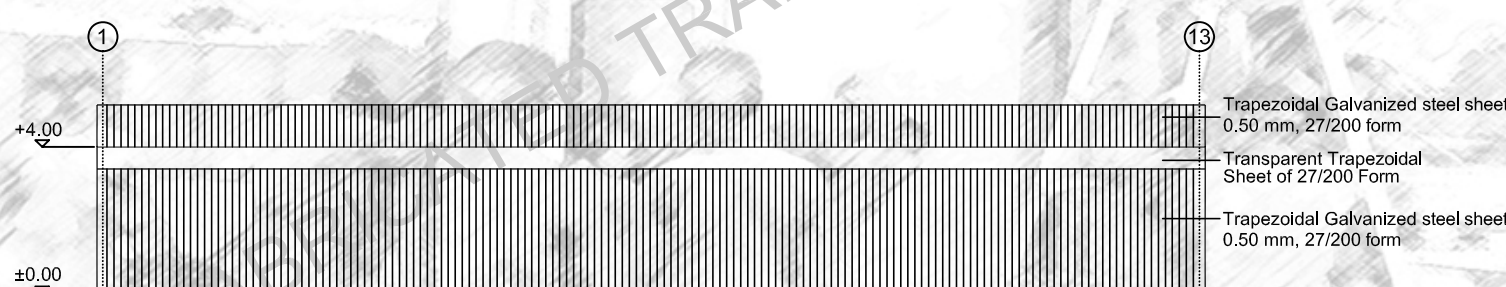
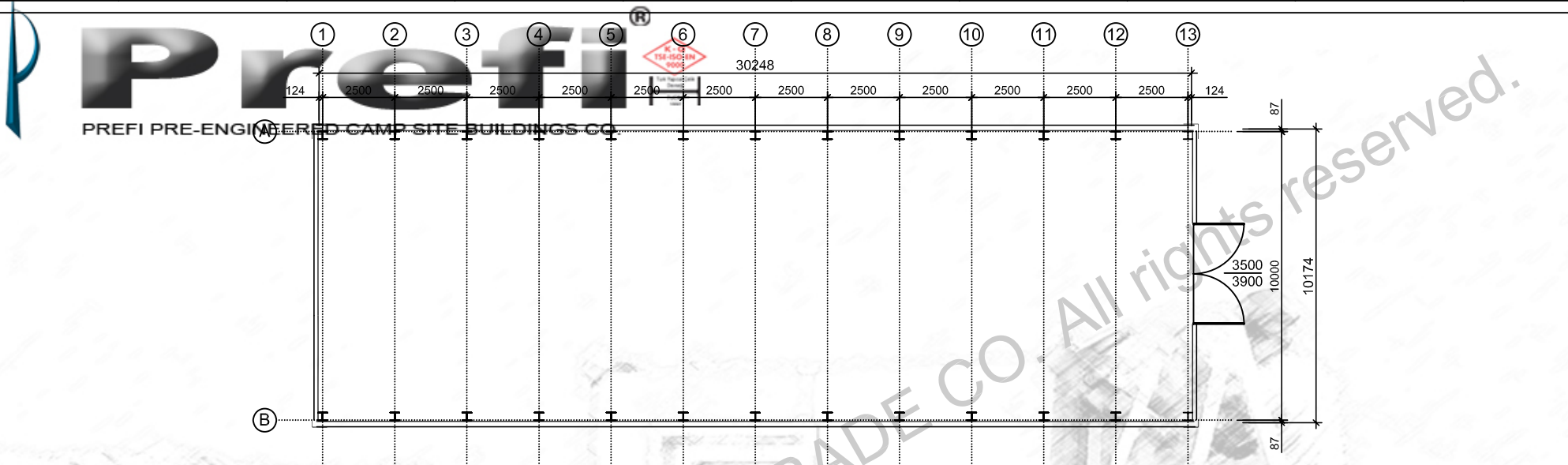
A-A SECTION

- 0.50 mm. Trapezoidal Galvanized steel sheet
- Steel Purlin
- Rafter
- 50mm. 14 kg/m<sup>3</sup> Glasswool Insulation
- White Vinly Coated Gypsum Board

- External Surfaces 0.70 mm Thickness
- Coil-coated Painted
- PVC Film Coated Galvanize Steel.
- 50 mm 14 kg/m<sup>3</sup> Thickness Glasswool
- Box Profile And/Or Specially Formed Profiles
- Internal Wall Clad 8 mm. Thickness,
- Each Sides Are White-White Laminated Chipboard



1 2 3 4 5 6 7 8 9 10



**P r e f i**

PREFABRIK YAPI END. BİLİŞİM ve TİCARET LTD.ŞTİ.  
Ankara - İstanbul Karayolu, 30. km  
Akıncı Kavşağı, Kazan 06980 Ankara  
Tel:90(312) 815 49 75(Pbx) Fax:90(312) 815 49 78  
www.Prefi.com.tr e-posta: prefipref.com

ÇİZEN:  
DRAWN:

KONTROL:  
CHK:

ONAYLAMA:  
APPROVAL: H. VAKUR YILMAZYİĞİT

FİRMA /COMPANY:

**CAMP FOR 500 PERSON**

TARİH/DATE:

BAŞLIK /TITLE:

**WAREHOUSE**

REFERANS:

REV.NO:

SAYFA /PAGE:

2  
m

307.74

15/17

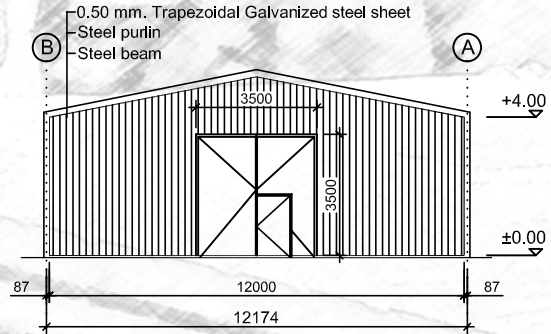
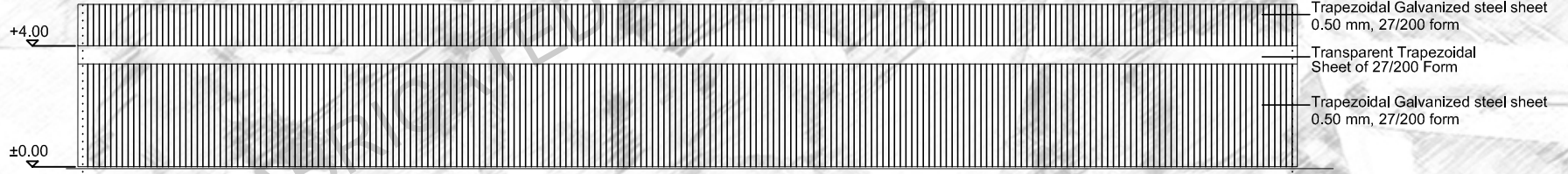
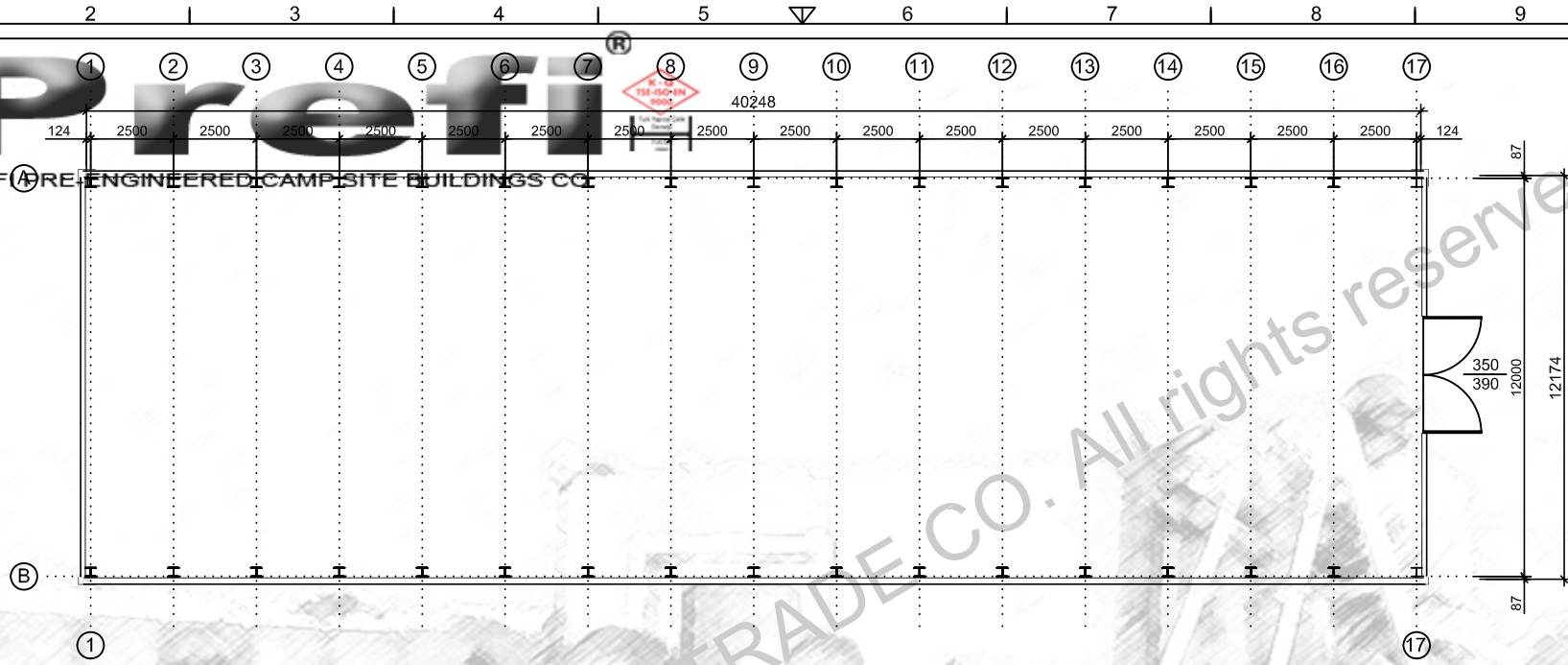
1 2 3 4 5 6 7 8 9 10

# Prefi

PREFABRICATED CAMP SITE BUILDINGS CO.



40248



# Prefi

PREFABRİK YAPI END. BİLİŞİM ve TİCARET LTD.ŞTİ.  
Ankara - İstanbul Karayolu, 30. km  
Akıncı Kavşağı, Kazan 06980 Ankara  
Tel:90(312) 815 49 75(Pbx) Fax:90(312) 815 49 78  
www.Prefi.com.tr e-posta: prefipref.com

ÇİZEN:  
DRAWN:  
KONTROL:  
CHK:  
ONAYLAMA:  
APPROVAL: H. VAKUR YILMAZYİĞİT

FİRMA /COMPANY:  
**CAMP FOR 500 PERSON**  
TARİH/DATE:

BAŞLIK /TITLE:  
**WAREHOUSE**  
REFERANS:  
REV.NO:  
SAYFA /PAGE:  
16/17

2  
m<sup>2</sup>  
489.97

2 UNIT

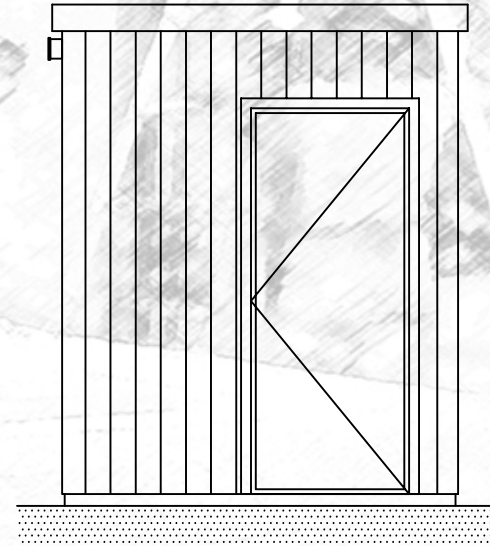
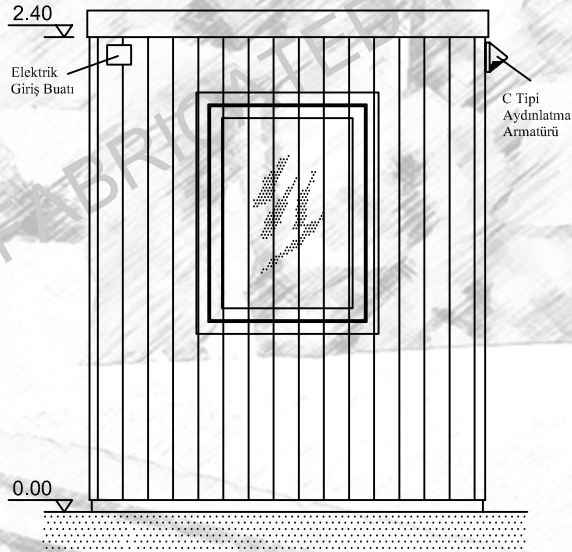
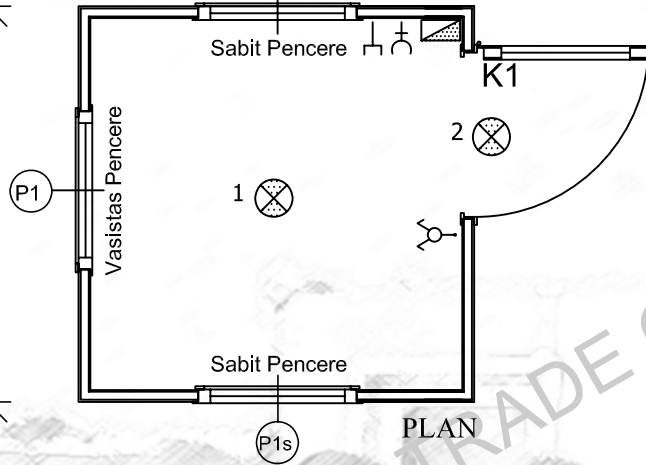
# Prefi

2000<sup>®</sup>

PREFI PRE-ENGINEERED CAMP SITE BUILDINGS CO.



2000



SWITCH
DOUBLE SWITCH
1 X 40 TMS ARMATURE
2 X 40 TMS ARMATURE
LATERAL EARTH SOCKET
TELEPHONE
C TYPE GLOBE
C TYPE GLOBE WITH WIRE GUARD
4 X 18 PARABOLIC ARM.
220V/SURFACE MOUNTING FUSE BOX
K1 850 x 2000
K2 840 x 2000
K3 1760 x 2000
K4 740 x 2000
P1 800 x 1100
P2 800 x 400
ALL MEASURED IN MILLIMETERS

## Prefi

PREFABRİK YAPI END. BİLİŞİM ve TİCARET LTD.ŞTİ.  
Ankara - İstanbul Karayolu, 30. km  
Akıncı Kavşağı, Kazan 06980 Ankara  
Tel:90(312) 815 49 75(Pbx) Fax:90(312) 815 49 78  
www.prefipref.com e-posta: prefipref@prefipref.com

ÇİZEN:  
DRAWN:

KONTROL:  
CHK:

ONAYLAMA:  
APPROVAL: H.VAKUR YILMAZYİĞİT

FİRMA /COMPANY:

CAMP FOR 500 PERSON

TARİH/DATE:

BAŞLIK /TITLE:

BEKÇİ KULÜBESİ (TİP A-A2-A2020 3P)

REFERANS:

REV.NO:

SAYFA /PAGE:

2  
m

4.0

17/17

F.MI.10/B

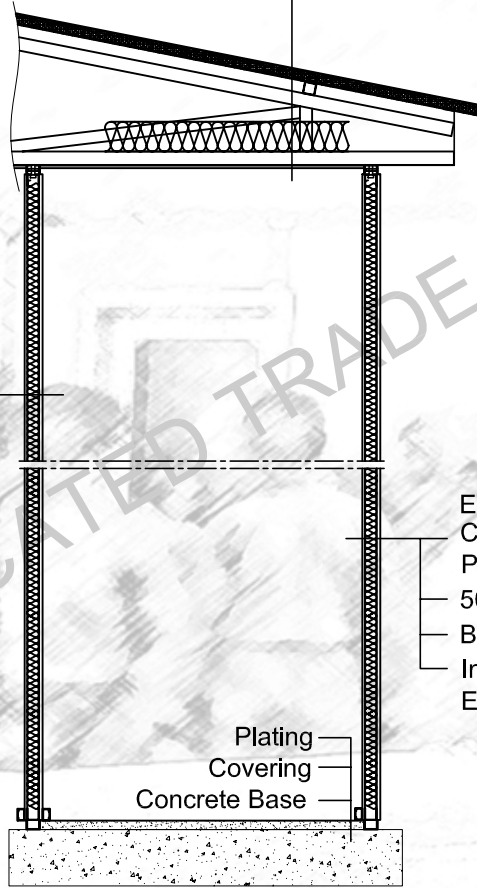
YAYIN TARİHİ : 11/04/2005

REVİZYON TARİHİ : 07/03/2007



**Prefi**  
PREFI PRE-ENGINEERED CAMP SITE BUILDINGS CO.

0.50 mm. Trapezoidal Galvanized steel sheet  
Steel Purlin  
Rafter  
50mm. 14 kg/m<sup>3</sup> Glasswool Insulation  
White Vinyl Coated Gypsum Board



Internal Wall Clad 8 mm. Thickness Each Sides  
Are White-White Laminated Chipboard  
50 mm. 14 kg/m<sup>3</sup> Thickness Glasswool  
Box Profile And/Or Specially Formed Profiles  
Internal Wall Clad 8 mm. Thickness Each Sides  
Are White-White Laminated Chipboard

External Surfaces 0.70 mm Thickness  
Coil-coated Painted  
PVC Film Coated Galvanize Steel.  
50 mm. 14 kg/m<sup>3</sup> Thickness Glasswool  
Box Profile And/Or Specially Formed Profiles  
Internal Wall Clad 8 mm. Thickness  
Each Sides Are White-White Laminated Chipboard

Plating  
Covering  
Concrete Base

**Prefi**

PREFABRIK YAPI END. BİLİŞİM ve TİCARET LTD.ŞTİ.  
Ankara - İstanbul Karayolu, 30. km  
Akıncı Kavşağı, Kazan 06980 Ankara  
Tel: +90(312) 815 49 75(Pbx) Fax: +90(312) 815 49 78  
www.Prefi.com.tr e-posta: prefipref.com

ÇİZEN:  
DRAWN:

KONTROL:  
CHK:

ONAYLAMA:  
APPROVAL:

FİRMA /COMPANY:

TARİH/DATE:

BAŞLIK /TITLE:

PANEL DETAIL

GLV SLAM

m<sup>2</sup>

REFERANS:

REV.NO:

SAYFA /PAGE:



A VIEW

**Pre fi**

PREFİ PREFABRİK YAPI END. BİLİŞİM ve TİCARET LTD.ŞTİ.  
Ankara - İstanbul Karayolu, 30. km  
Kazan 06980 Ankara/TURKEY  
Tel:90(312) 815 49 75(Pbx) Fax:90(312) 815 49 78  
www.Prefi.com.tr e-posta: prefi@prefi.com.tr

DRAWN:  
CHK:  
ONAYLAMA:  
APPROVAL: **H. VAKUR YILMAZYİĞİT**

FİRMA /COMPANY:  
TARİH/DATE:

BAŞLIK /TITLE:		DETAIL OF PANEL CONNECTION		2
		GLV-SLAM		m
REFERANS:	REV.NO:	SAYFA /PAGE:		