

**P r e f i**

PREFABRİK YAPI END. BİLİŞİM ve TİCARET LTD.ŞTİ.  
Ankara - İstanbul Karayolu, 30. km  
Akıncı Kavşağı, Kazan 06980 Ankara  
Tel: +90(312) 815 49 75 (Pbx) Fax: +90(312) 815 49 78  
www.Prefi.com.tr e-posta: prefi@prefi.com.tr

ÇİZEN:  
DRAWN:

KONTROL:  
CHK:

ONAYLAMA:  
APPROVAL: H.V.Y.

FİRMA /COMPANY:

**500 KİŞİLİK GLV-BET KAMP**

TARİH/DATE:

XX.XX.2010

BAŞLIK /TITLE:

**KAMP YERLEŞİM PLANI**

m<sup>2</sup>

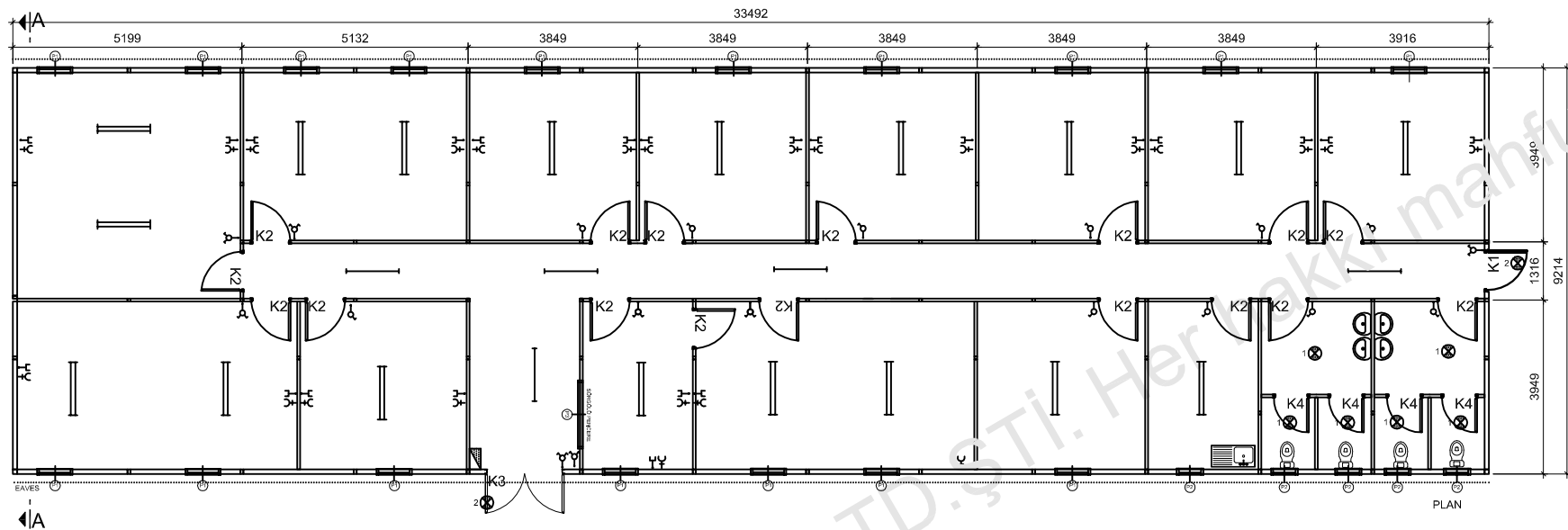
REFERANS:

TM1001/00..

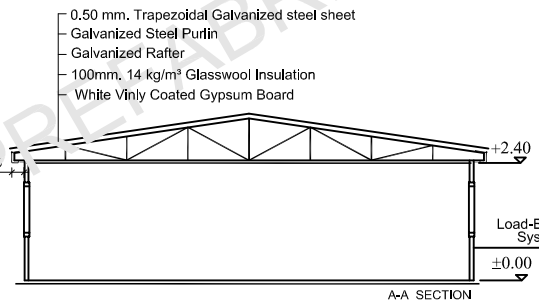
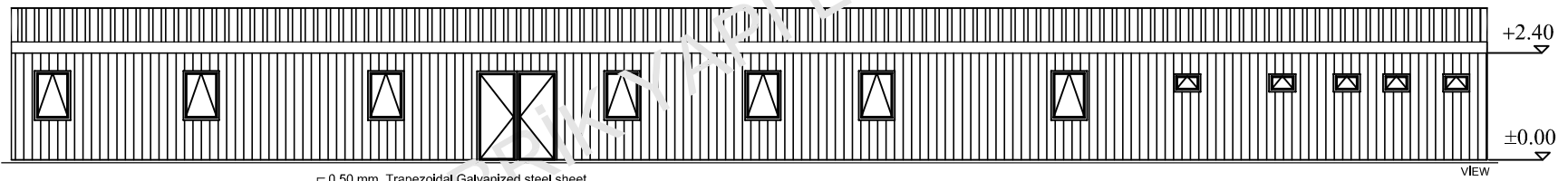
REV.NO:

REV 00

SAYFA /PAGE:

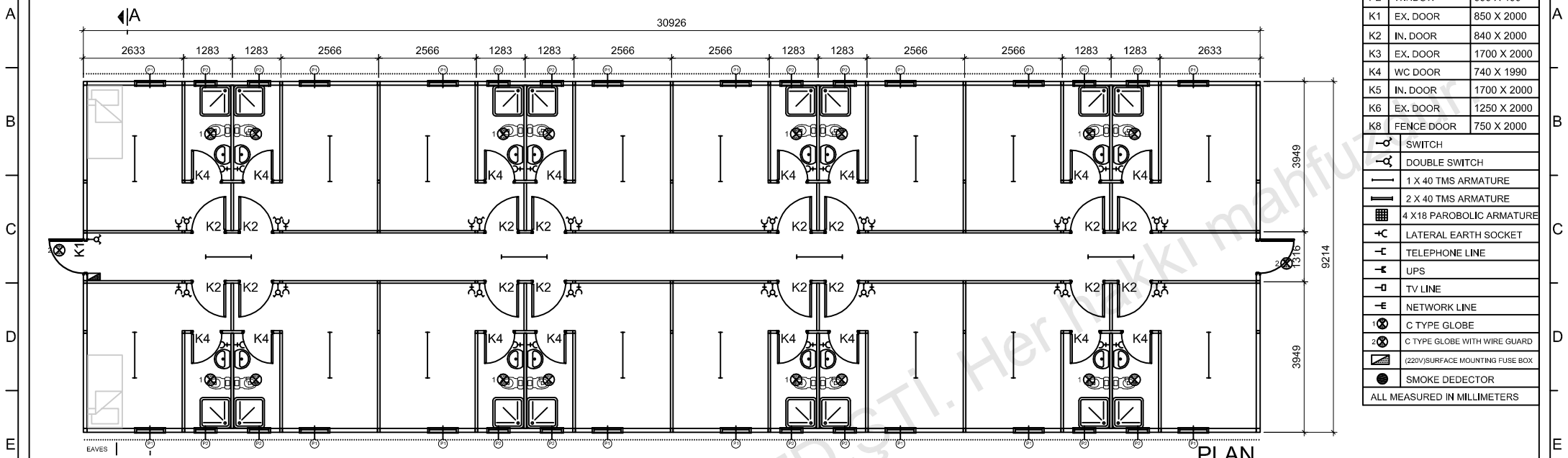


|                             |                                  |             |
|-----------------------------|----------------------------------|-------------|
| P1                          | WINDOW                           | 800 X 1100  |
| P2                          | WINDOW                           | 800 X 400   |
| K1                          | EX. DOOR                         | 850 X 2000  |
| K2                          | IN. DOOR                         | 840 X 2000  |
| K3                          | EX. DOOR                         | 1700 X 2000 |
| K4                          | WC DOOR                          | 740 X 1990  |
| K5                          | IN. DOOR                         | 1700 X 2000 |
| K6                          | EX. DOOR                         | 1250 X 2000 |
| K8                          | FENCE DOOR                       | 750 X 2000  |
|                             | SWITCH                           |             |
|                             | DOUBLE SWITCH                    |             |
|                             | 1 X 40 TMS ARMATURE              |             |
|                             | 2 X 40 TMS ARMATURE              |             |
|                             | 4 X 18 PAROBOLIC ARMATURE        |             |
|                             | LATERAL EARTH SOCKET             |             |
|                             | TELEPHONE LINE                   |             |
|                             | UPS                              |             |
|                             | TV LINE                          |             |
|                             | NETWORK LINE                     |             |
|                             | C TYPE GLOBE                     |             |
|                             | C TYPE GLOBE WITH WIRE GUARD     |             |
|                             | (220V) SURFACE MOUNTING FUSE BOX |             |
|                             | SMOKE DEECTOR                    |             |
| ALL MEASURED IN MILLIMETERS |                                  |             |



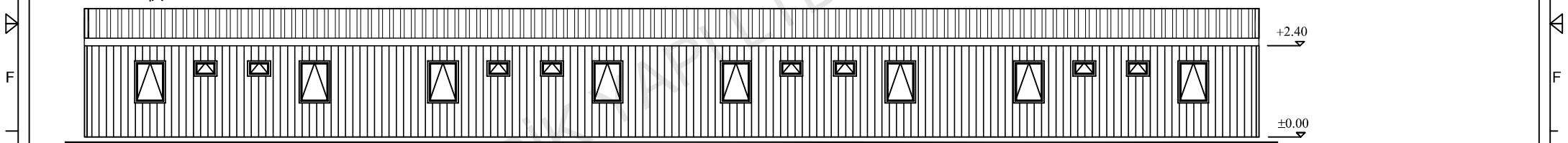
External Surfaces 0.70 mm Thickness Coil-coated Painted PVC Film Coated Galvanize Steel.  
 80 mm, 14 kg/m<sup>3</sup> Thickness Glasswool  
 Galvanized Specialty C/U Formed Profiles  
 Internal Wall Clad 8 mm Thickness Cement Bounded Particular Panel/Fiber Cement Panel

|  |                        |  |   |              |                     |
|--|------------------------|--|---|--------------|---------------------|
| <p>PREFABRİK YAPI END. BİLİŞİM ve TİCARET LTD.ŞTİ.<br/>                 Ankara - İstanbul Karayolu, 30. km<br/>                 Akıncı Kavşağı, Kazan 06980 Ankara<br/>                 Tel:+90(312) 815 49 75(Pbx) Fax:+90(312) 815 49 78<br/>                 www.Prefi.com.tr e-posta: prefi@prefi.com.tr</p> | ÇİZEN:<br>DRAWN: E.Ç.. | FIRMA /COMPANY:<br><b>500 PER CAMP</b> | BAŞLIK /TITLE:<br><b>OFFICE BULDING</b> |              | m <sup>2</sup>      |
|  | KONTROL:<br>CHK:       |  | TARİH/DATE:<br>21/11/2012               | REFERANS NO: | PROJE NO:<br>REV 00 |
| ONAYLAMA:<br>APPROVAL: H.V.Y.  |                        |  | SAYFA /PAGE:                            |              |                     |



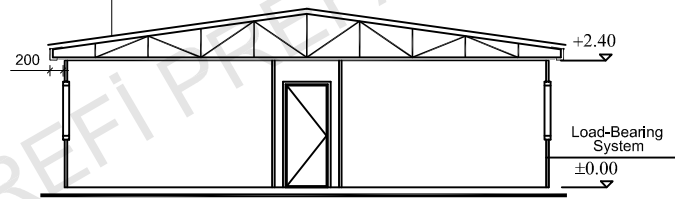
|                             |                                  |             |
|-----------------------------|----------------------------------|-------------|
| P1                          | WINDOW                           | 800 X 1100  |
| P2                          | WINDOW                           | 600 X 400   |
| K1                          | EX. DOOR                         | 850 X 2000  |
| K2                          | IN. DOOR                         | 840 X 2000  |
| K3                          | EX. DOOR                         | 1700 X 2000 |
| K4                          | WC DOOR                          | 740 X 1990  |
| K5                          | IN. DOOR                         | 1700 X 2000 |
| K6                          | EX. DOOR                         | 1250 X 2000 |
| K8                          | FENCE DOOR                       | 750 X 2000  |
| SW                          | SWITCH                           |             |
| DSW                         | DOUBLE SWITCH                    |             |
| 1 X 40                      | TMS ARMATURE                     |             |
| 2 X 40                      | TMS ARMATURE                     |             |
| 4 X 18                      | PAROBOLIC ARMATURE               |             |
| CS                          | LATERAL EARTH SOCKET             |             |
| TL                          | TELEPHONE LINE                   |             |
| UPS                         | UPS                              |             |
| TV                          | TV LINE                          |             |
| NET                         | NETWORK LINE                     |             |
| CG                          | C TYPE GLOBE                     |             |
| CGW                         | C TYPE GLOBE WITH WIRE GUARD     |             |
| SM                          | (220V) SURFACE MOUNTING FUSE BOX |             |
| SD                          | SMOKE DEECTOR                    |             |
| ALL MEASURED IN MILLIMETERS |                                  |             |

PLAN



VIEW

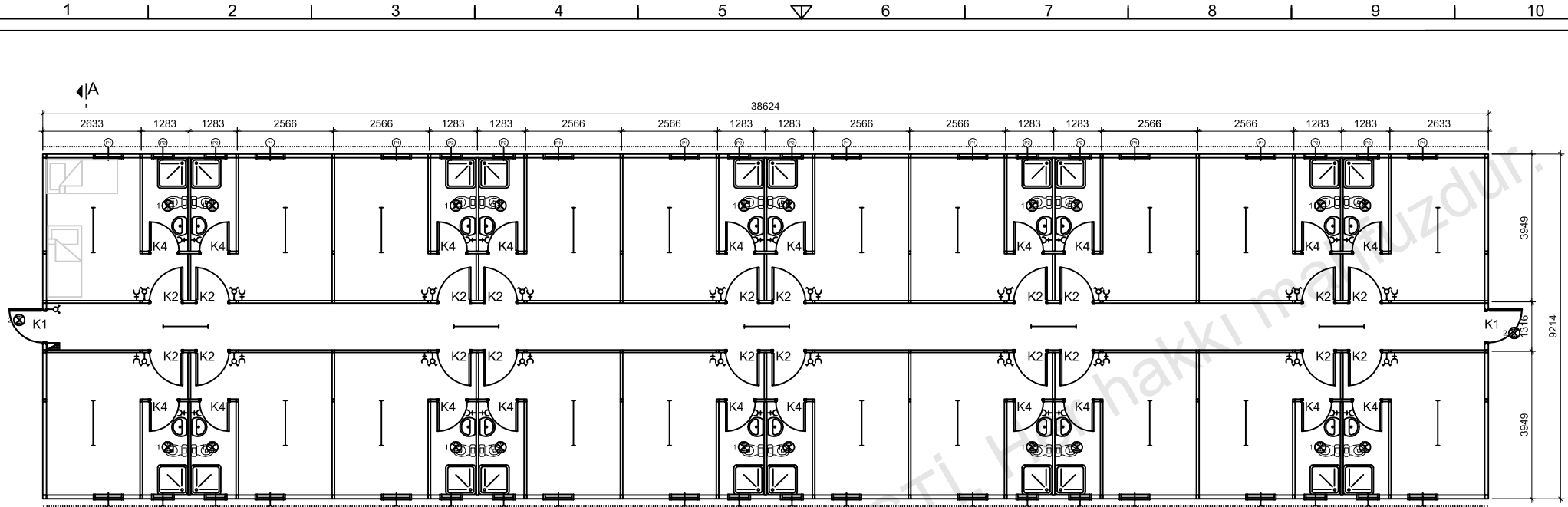
- 0,50 mm. Trapezoidal Galvanized steel sheet
- Galvanized Steel Purlin
- Galvanized Rafter
- 100mm. 14 kg/m³ Glasswool Insulation
- White Vinly Coated Gypsum Board



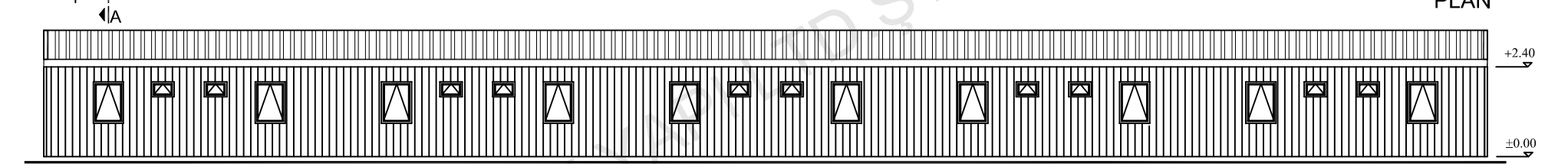
A-A SECTION

- External Surfaces 0,70 mm Thickness Coil-coated Painted PVC Film Coated Galvanize Steel.
- 80 mm. 14 kg/m³ Thickness Glasswool
- Galvanized Specially C/U Formed Profiles
- Internal Wall Clad 8 mm Thickness Cement Bounded Particular Panel /Fiber Cement Panel

|  |  |   |  |                           |
|--|--|---|--|---------------------------|
| <p>PREFABRİK YAPI END. BİLİŞİM ve TİCARET LTD.ŞTİ.<br/>Ankara - İstanbul Karayolu, 30. km<br/>Akıncı Kavşağı, Kazan 06980 Ankara<br/>Tel:+90(312) 815 49 75(Pbx) Fax:+90(312) 815 49 78<br/>www.Prefi.com.tr e-posta: prefi@prefi.com.tr</p> | <p>ÇİZEN: E.Ç..</p> <p>KONTROL: CHK:</p> <p>ONAYLAMA: H.V.Y.</p> | <p>FİRMA /COMPANY:</p> <p><b>500 PER CAMP</b></p> <p>TARİH/DATE: 21/11/2012</p> | <p>BASLIK /TITLE:</p> <p><b>16 PER. ENGINEER DORMITORY</b></p> | <p>m²</p> <p>282.94m²</p> |
|  | <p>REFERANS NO:</p>  | <p>PROJE NO: REV 00</p>   | <p>SAYFA /PAGE:</p>  |                           |

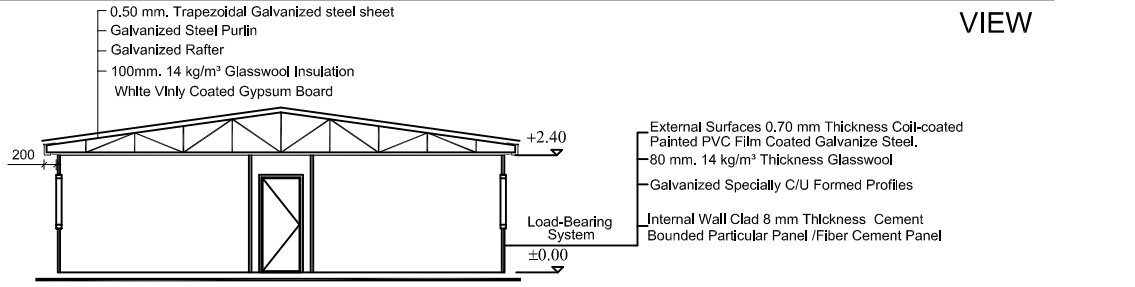


PLAN



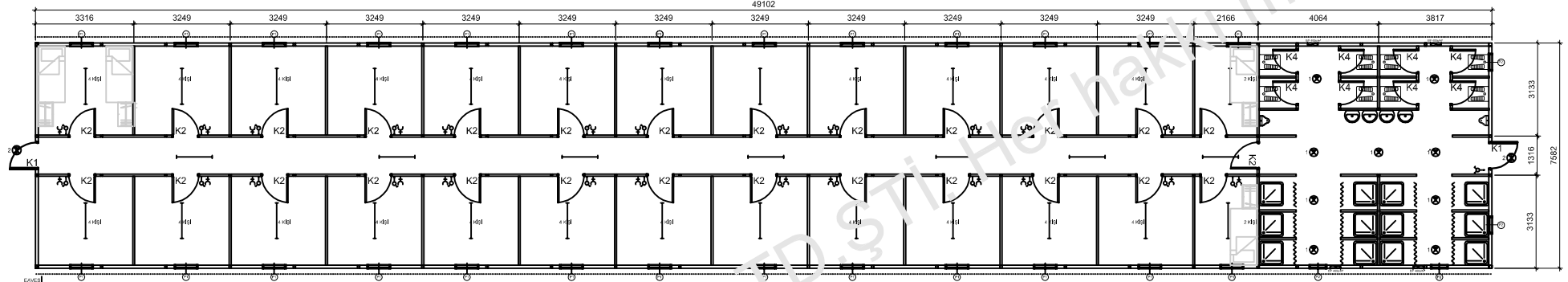
VIEW

|                             |                                  |             |
|-----------------------------|----------------------------------|-------------|
| P1                          | WINDOW                           | 800 X 1100  |
| P2                          | WINDOW                           | 600 X 400   |
| K1                          | EX. DOOR                         | 850 X 2000  |
| K2                          | IN. DOOR                         | 840 X 2000  |
| K3                          | EX. DOOR                         | 1700 X 2000 |
| K4                          | WC DOOR                          | 740 X 1990  |
| K5                          | IN. DOOR                         | 1700 X 2000 |
| K6                          | EX. DOOR                         | 1250 X 2000 |
| K8                          | FENCE DOOR                       | 750 X 2000  |
| ⊕                           | SWITCH                           |             |
| ⊕                           | DOUBLE SWITCH                    |             |
| —                           | 1 X 40 TMS ARMATURE              |             |
| —                           | 2 X 40 TMS ARMATURE              |             |
| ■                           | 4 X18 PARABOLIC ARMATURE         |             |
| +C                          | LATERAL EARTH SOCKET             |             |
| -L                          | TELEPHONE LINE                   |             |
| -K                          | UPS                              |             |
| -D                          | TV LINE                          |             |
| -E                          | NETWORK LINE                     |             |
| ⊙                           | C TYPE GLOBE                     |             |
| ⊙                           | C TYPE GLOBE WITH WIRE GUARD     |             |
| ⊙                           | (220V) SURFACE MOUNTING FUSE BOX |             |
| ●                           | SMOKE DECECTOR                   |             |
| ALL MEASURED IN MILLIMETERS |                                  |             |

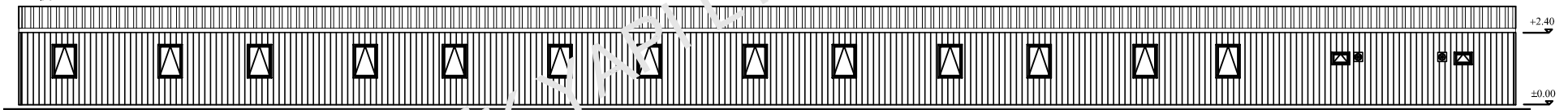


A-A SECTION

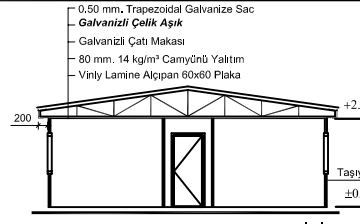
|   |   |  |  |   |
|---|---|--|--|---|
| <p>PREFABRİK YAPI END. BİLİŞİM ve TİCARET LTD.ŞTİ.<br/>Ankara - İstanbul Karayolu, 30. km<br/>Akıncı Kavşağı, Kazan 06980 Ankara<br/>Tel:+90(312) 815 49 75(Pbx) Fax:+90(312) 815 49 78<br/>www.Prefi.com.tr e-posta: pref@prefi.com.tr</p> | <p>ÇİZEN: E.Ç.<br/>DRAWN: E.Ç.</p>                  | <p>FİRMA /COMPANY:<br/><b>500 PER CAMP</b></p> | <p>BASLIK /TITLE:<br/><b>40 PER. STAFF DORMITORY</b></p> | <p>m<sup>2</sup><br/>355.88 m<sup>2</sup></p> |
|   | <p>KONTROL: CHK:<br/>ONAYLAMA: APPROVAL: H.V.Y.</p> | <p>TARİH/DATE:<br/>21/11/2012</p>              | <p>REFERANS NO:</p>                                      | <p>PROJE NO:<br/>REV 00</p>                   |



PLAN



CEPHE GÖRÜNÜŞÜ



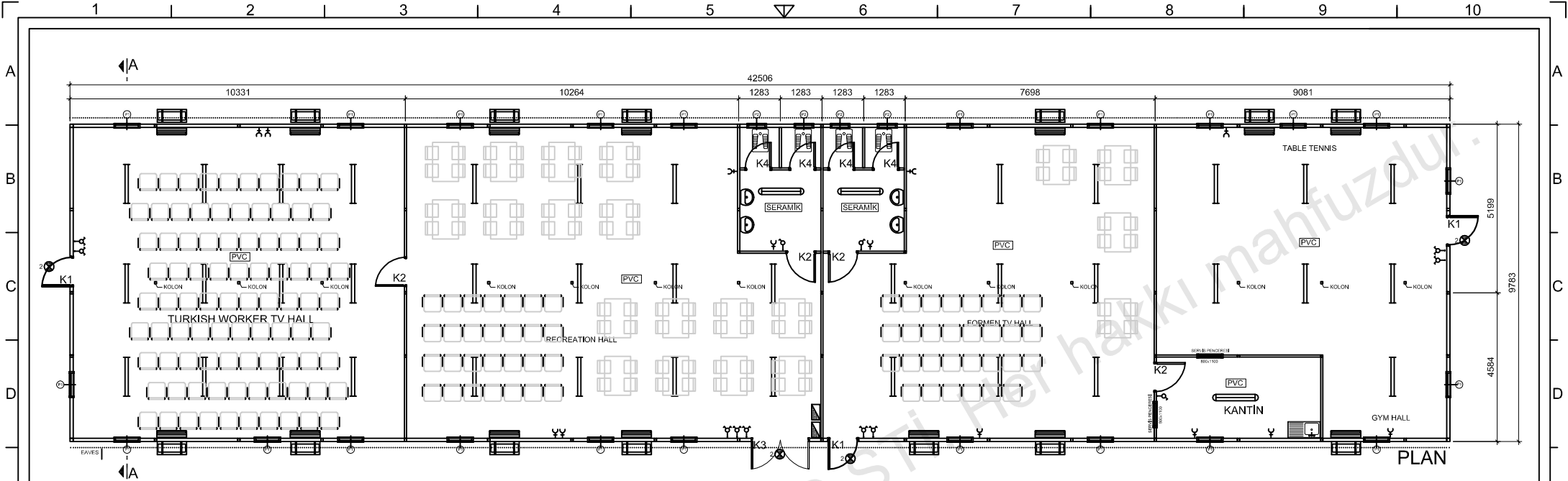
A-A KESİTİ

- 0.50 mm. Trapezoidal Galvanize Sac
- Galvanizli Çelik Aşık
- Galvanizli Çatı Makası
- 80 mm. 14 kg/m<sup>2</sup> Camyünü Yalıtım
- Vinyl Lamine Alçıpan 60x60 Plaka

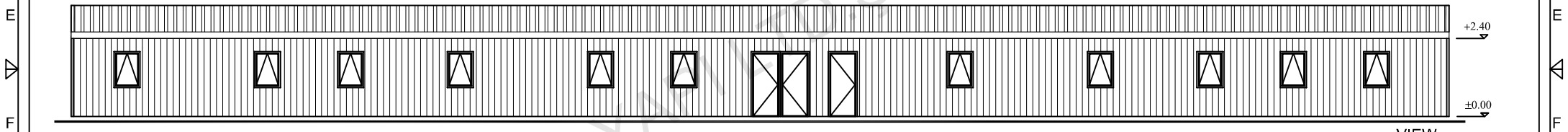
- Diş Kaplama 0.70 mm Kalınlığında Özel Şekillendirilmiş
- Coil-coated Boyalı
- PVC Film Kaplı Galvanize Sac
- 50 mm. 14 kg/m<sup>2</sup> Camyünü Yalıtım
- 50 mm. Özel Büküm Galvanizli Çelik Karkas
- İç Kaplama 8 mm Kalınlığında
- Her İki Yüzeyle Lamine Edilmiş
- Beyaz-Beyaz Suntalam Levha

|                             |                                |             |
|-----------------------------|--------------------------------|-------------|
| P1                          | WINDOW                         | 800 X 1100  |
| P2                          | WINDOW                         | 600 X 400   |
| K1                          | EX. DOOR                       | 850 X 2000  |
| K2                          | IN. DOOR                       | 840 X 2000  |
| K3                          | EX. DOOR                       | 1700 X 2000 |
| K4                          | WC DOOR                        | 740 X 1990  |
| K5                          | IN. DOOR                       | 1700 X 2000 |
| K6                          | EX. DOOR                       | 1250 X 2000 |
| K8                          | FENCE DOOR                     | 750 X 2000  |
|                             | SWITCH                         |             |
|                             | DOUBLE SWITCH                  |             |
|                             | 1 X 40 TMS ARMATURE            |             |
|                             | 2 X 40 TMS ARMATURE            |             |
|                             | 4 X 18 PARABOLİK ARMATURE      |             |
|                             | LATERAL EARTH SOCKET           |             |
|                             | TELEPHONE LINE                 |             |
|                             | UPS                            |             |
|                             | TV LINE                        |             |
|                             | NETWORK LINE                   |             |
|                             | C TYPE GLOBE                   |             |
|                             | C TYPE GLOBE WITH WIRE GUARD   |             |
|                             | 220V SURFACE MOUNTING FUSE BOX |             |
|                             | SMOKE DETECTOR                 |             |
| ALL MEASURED IN MILLIMETERS |                                |             |

|   |   |   |   |   |
|---|---|---|---|---|
| <p><b>Prefi</b><br/>                 PREFABRİK YAPI END. BİLİŞİM ve TİCARET LTD.ŞTİ.<br/>                 Ankara - İstanbul Karayolu, 30. km<br/>                 Akıncı Kavşağı, Kazan 06980 Ankara<br/>                 Tel:+90(312) 815 49 75(Pbx) Fax:+90(312) 815 49 78<br/>                 www.Prefi.com.tr e-posta: pref@prefi.com.tr</p> | ÇİZEN: E.Ç.<br>ÇİZEN: E.Ç.<br>KONTROL: CHK:<br>ONAYLAMA: H.V.Y.<br>APPROVAL: H.V.Y. | FIRMA /COMPANY:<br><b>500 PER CAMP</b><br>TARİH/DATE:<br>21/11/2012 | BAŞLIK /TITLE:<br><b>WORKERS DORMITORY</b><br>REFERANS NO:<br>PROJE NO:<br>REV 00 | m <sup>2</sup><br>372.28 m <sup>2</sup><br>SAYFA /PAGE: |
|   | YAYIN TARİHİ : 01/08/2001   |   |   | REVİZYON TARİHİ : 31/12/2012                            |

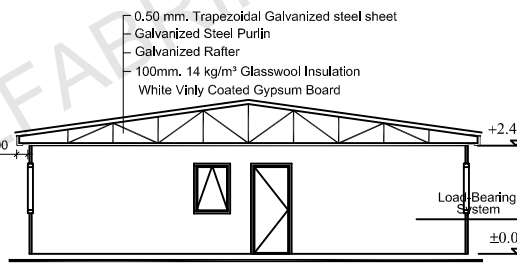


PLAN



VIEW

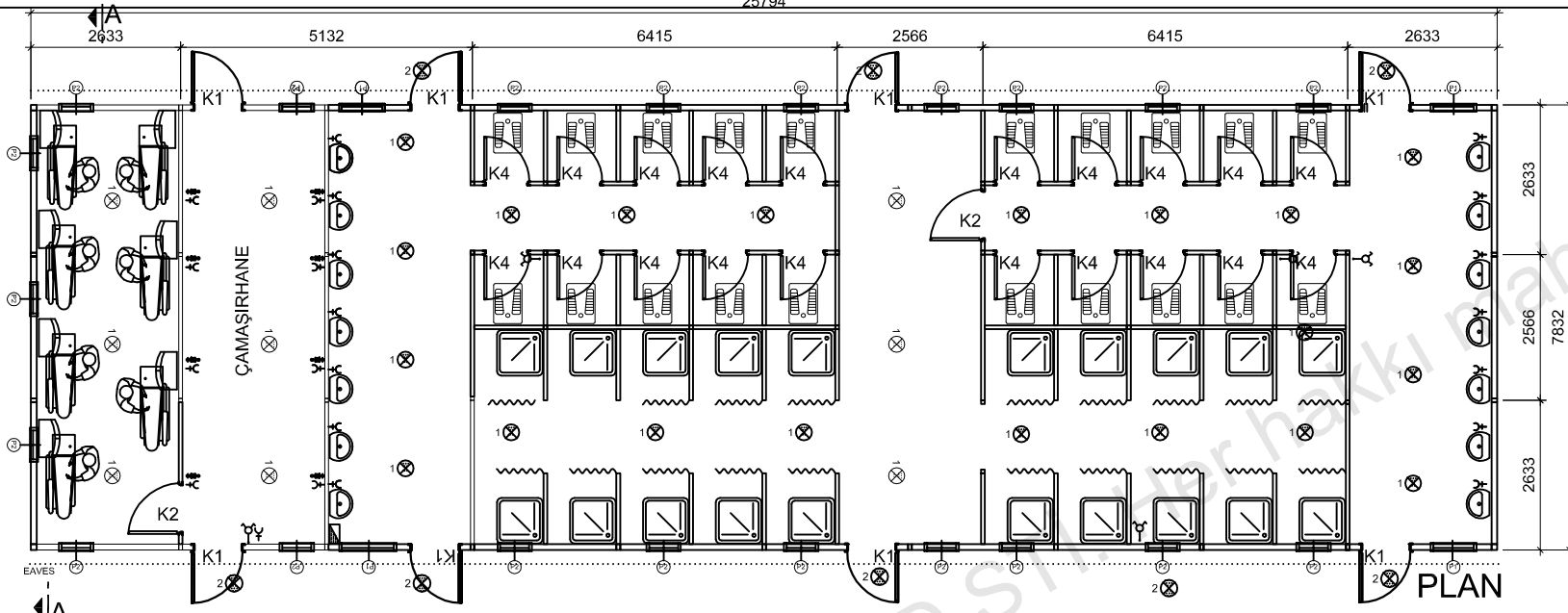
|                             |                                  |             |
|-----------------------------|----------------------------------|-------------|
| P1                          | WINDOW                           | 800 X 1100  |
| P2                          | WINDOW                           | 600 X 400   |
| K1                          | EX. DOOR                         | 850 X 2000  |
| K2                          | IN. DOOR                         | 840 X 2000  |
| K3                          | EX. DOOR                         | 1700 X 2000 |
| K4                          | WC DOOR                          | 740 X 1990  |
| K5                          | IN. DOOR                         | 1700 X 2000 |
| K6                          | EX. DOOR                         | 1250 X 2000 |
| K8                          | FENCE DOOR                       | 750 X 2000  |
| —○—                         | SWITCH                           |             |
| —○—                         | DOUBLE SWITCH                    |             |
| —                           | 1 X 40 TMS ARMATURE              |             |
| —                           | 2 X 40 TMS ARMATURE              |             |
| —                           | 4 X 18 PARABOLIC ARMATURE        |             |
| —C—                         | LATERAL EARTH SOCKET             |             |
| —T—                         | TELEPHONE LINE                   |             |
| —U—                         | UPS                              |             |
| —TV—                        | TV LINE                          |             |
| —N—                         | NETWORK LINE                     |             |
| 1                           | C TYPE GLOBE                     |             |
| 2                           | C TYPE GLOBE WITH WIRE GUARD     |             |
| —                           | (220V) SURFACE MOUNTING FUSE BOX |             |
| —                           | SMOKE DEECTOR                    |             |
| ALL MEASURED IN MILLIMETERS |                                  |             |



A-A SECTION

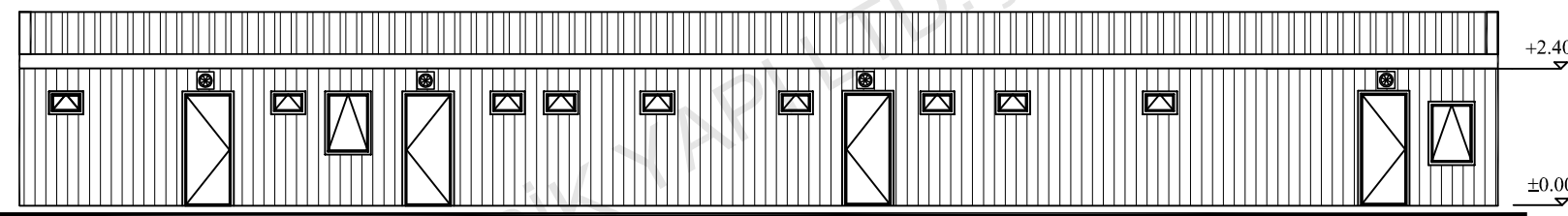
- 0.50 mm. Trapezoidal Galvanized steel sheet
- Galvanized Steel Purlin
- Galvanized Rafter
- 100mm. 14 kg/m<sup>3</sup> Glasswool Insulation
- White Vinily Coated Gypsum Board
- External Surfaces 0.70 mm Thickness Coil-coated Painted PVC Film Coated Galvanize Steel.
- 80 mm. 14 kg/m<sup>3</sup> Thickness Glasswool
- Galvanized Specially C/U Formed Profiles
- Internal Wall Clad 8 mm Thickness Cement Bounded Particular Panel/Fiber Cement Panel

|  |                      |  |  |  |                       |
|--|----------------------|--|--|--|-----------------------|
| <p><b>P r e f i</b><br/>         PREFABRİK YAPI END. BİLİŞİM VE TİCARET LTD.ŞTİ.<br/>         Ankara - İstanbul Karayolu, 30. km<br/>         Akıncı Kavşağı, Kazan 06980 Ankara<br/>         Tel:+90(312) 815 49 75(Pbx) Fax:+90(312) 815 49 78<br/>         www.Prefi.com.tr e-posta: prefi@prefi.com.tr</p> | ÇİZEN:<br>DRAWN: S.K | FIRMA /COMPANY:<br><b>500 PER CAMP</b> | BAŞLIK /TITLE:<br><b>RECREATION FOR WORKERS / FORMEN</b> |  | m <sup>2</sup>        |
|  | KONTROL:<br>CHK:     |  | TARIH/DATE:  |  | 415.83 m <sup>2</sup> |
| ONAYLAMA:<br>APPROVAL: H.V.Y.  | REFERANS NO:         | PROJE NO:                              | SAYFA /PAGE:   |  |                       |

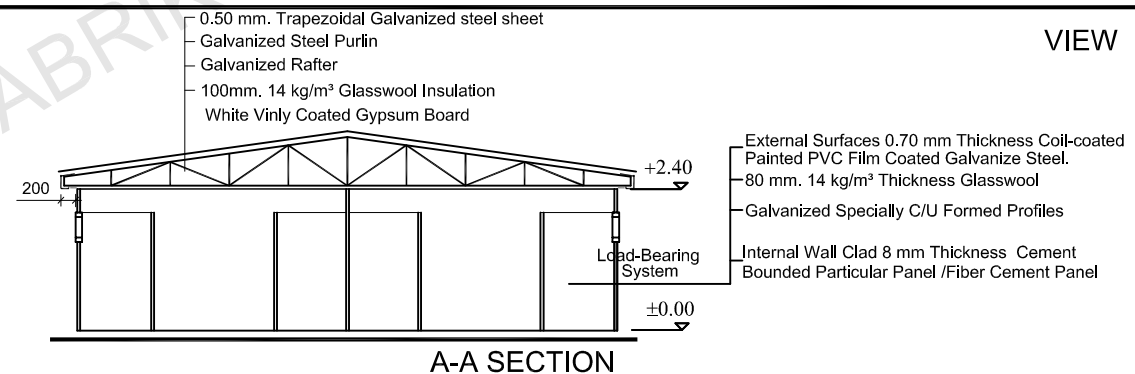


|   |            |             |
|---|------------|-------------|
| P1  | WINDOW     | 800 X 1100  |
| P2  | WINDOW     | 600 X 400   |
| K1  | EX. DOOR   | 850 X 2000  |
| K2  | IN. DOOR   | 840 X 2000  |
| K3  | EX. DOOR   | 1700 X 2000 |
| K4  | WC DOOR    | 740 X 1990  |
| K5  | IN. DOOR   | 1700 X 2000 |
| K6  | EX. DOOR   | 1250 X 2000 |
| K8  | FENCE DOOR | 750 X 2000  |
| SWITCH<br>DOUBLE SWITCH<br>1 X 40 TMS ARMATURE<br>2 X 40 TMS ARMATURE<br>4 X 18 PARABOLIC ARMATURE<br>LATERAL EARTH SOCKET<br>TELEPHONE LINE<br>UPS<br>TV LINE<br>NETWORK LINE<br>C TYPE GLOBE<br>C TYPE GLOBE WITH WIRE GUARD<br>(220V) SURFACE MOUNTING FUSE BOX<br>SMOKE DETECTOR<br>ALL MEASURED IN MILLIMETERS |            |             |

PLAN

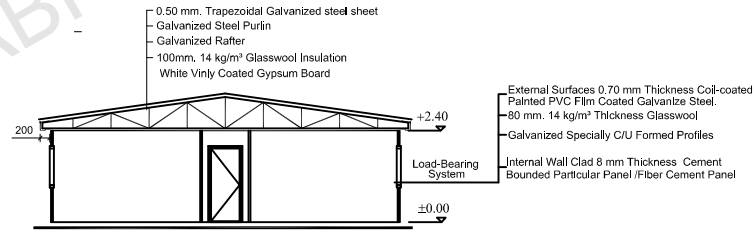
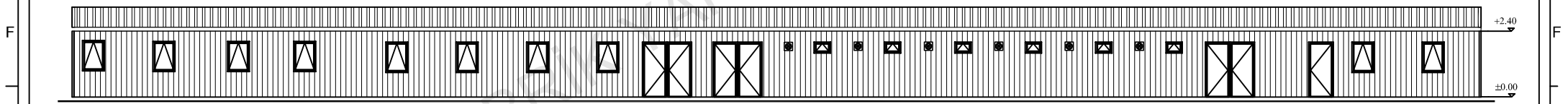
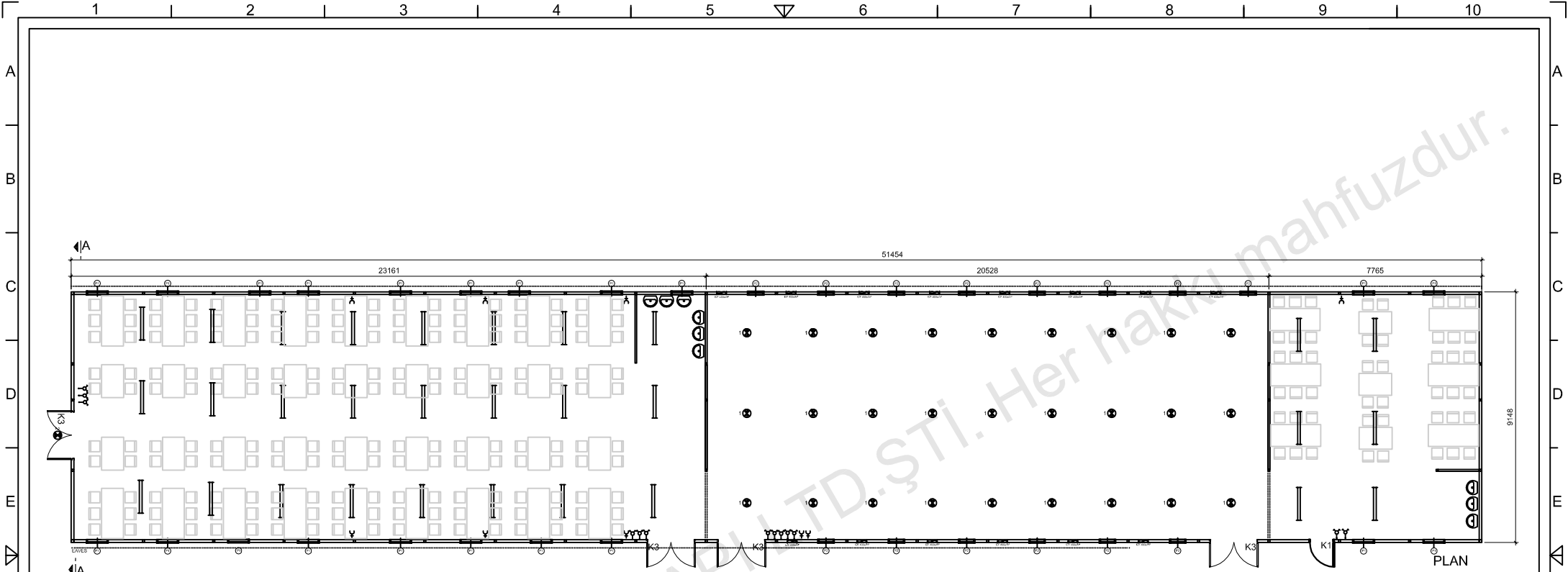


VIEW



A-A SECTION

|  |                       |  |  |  |                      |
|--|-----------------------|--|--|--|----------------------|
| <p>PREFABRİK YAPI END. BİLİŞİM ve TİCARET LTD.ŞTİ.<br/>         Ankara - İstanbul Karayolu, 30. km<br/>         Akıncı Kavşağı, Kazan 06980 Ankara<br/>         Tel:+90(312) 815 49 75(Pbx) Fax:+90(312) 815 49 78<br/>         www.Prefi.com.tr e-posta: prefi@prefi.com.tr</p> | ÇİZEN:<br>DRAWN: E.Ç. | FIRMA /COMPANY:<br><b>500 PER CAMP</b> | BAŞLIK /TITLE:<br><b>WC-SHOWER BULDING</b> |  | m <sup>2</sup>       |
|  | KONTROL:<br>CHK:      |  | TARIH/DATE:                                |  | 202.18m <sup>2</sup> |
| ONAYLAMA:<br>APPROVAL: H.V.Y.  | REFERANS NO:          | PROJE NO:                              | SAYFA /PAGE:                               |  |                      |



|                             |                              |             |
|-----------------------------|------------------------------|-------------|
| P1                          | WINDOW                       | 800 X 1100  |
| P2                          | WINDOW                       | 600 X 400   |
| K1                          | EX. DOOR                     | 850 X 2000  |
| K2                          | IN. DOOR                     | 840 X 2000  |
| K3                          | EX. DOOR                     | 1700 X 2000 |
| K4                          | WC DOOR                      | 740 X 1990  |
| K5                          | IN. DOOR                     | 1700 X 2000 |
| K6                          | EX. DOOR                     | 1250 X 2000 |
| K8                          | FENCE DOOR                   | 750 X 2000  |
| SW                          | SWITCH                       |             |
| DS                          | DOUBLE SWITCH                |             |
| TA                          | 1 X 40 TMS ARMATURE          |             |
| TA2                         | 2 X 40 TMS ARMATURE          |             |
| PA                          | 4 X 18 PARABOLIC ARMATURE    |             |
| LE                          | LATERAL EARTH SOCKET         |             |
| TEL                         | TELEPHONE LINE               |             |
| UPS                         | UPS                          |             |
| TV                          | TV LINE                      |             |
| ML                          | METVORIK LINE                |             |
| GL                          | GTYPE GLOBE                  |             |
| CG                          | C TYPE GLOBE WITH WIRE GUARD |             |
| SD                          | SMOKE DETECTOR               |             |
| BD                          | BANK DETECTOR                |             |
| ALL MEASURED IN MILLIMETERS |                              |             |

0.50 mm, Trapezoidal Galvanized steel sheet  
Galvanized Steel Purlin  
Galvanized Rafter  
100mm, 14 kg/m<sup>3</sup> Glasswool Insulation  
White Vinly Coated Gypsum Board

External Surfaces 0.70 mm Thickness Coil-coated  
Painted PVC Film Coated Galvanize Steel.  
80 mm, 14 kg/m<sup>3</sup> Thickness Glasswool  
Galvanized Specially C/U Formed Profiles  
Internal Wall Clad 8 mm Thickness Cement  
Bounded Particular Panel /Fiber Cement Panel

**Prefi**  
PREFABRİK YAPI END. BİLİŞİM ve TİCARET LTD.ŞTİ.  
Ankara - İstanbul Karayolu, 30. km  
Akıncı Kavşağı, Kazan 06980 Ankara  
Tel:+90(312) 815 49 75(Pbx) Fax:+90(312) 815 49 78  
www.Prefi.com.tr e-posta: pref@prefi.com.tr

ÇİZEN: E.Ç..  
DRAWN:  
KONTROL: CHK:  
CHK:  
ONAYLAMA: H.V.Y.  
APPROVAL:

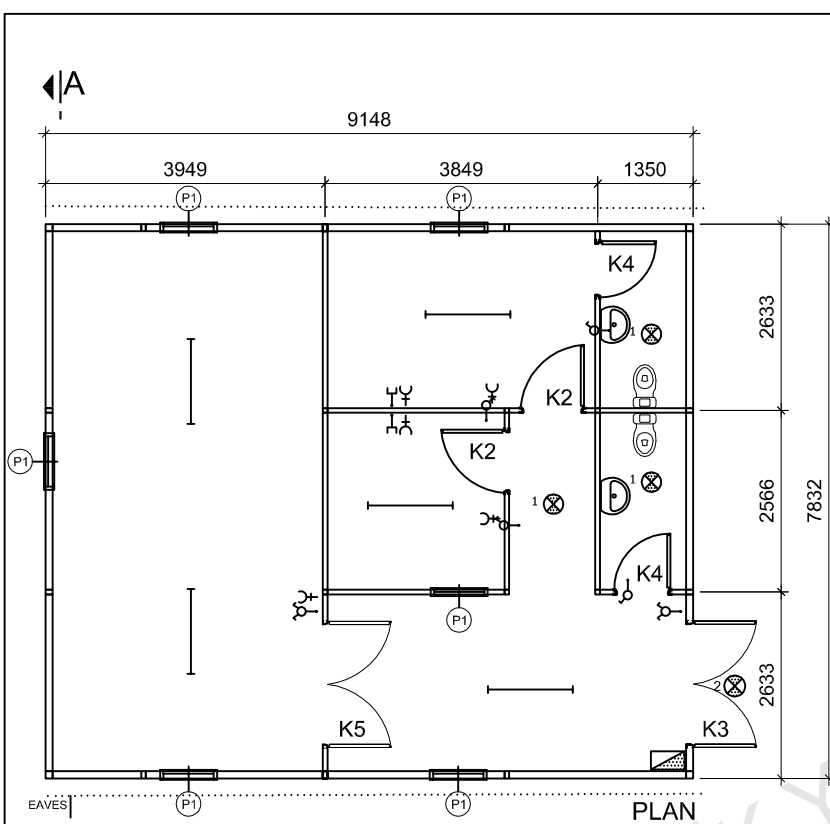
FİRMA /COMPANY:  
**500 PER CAMP**  
TARİH/DATE:

BAŞLIK /TITLE:  
**HALL DINING**

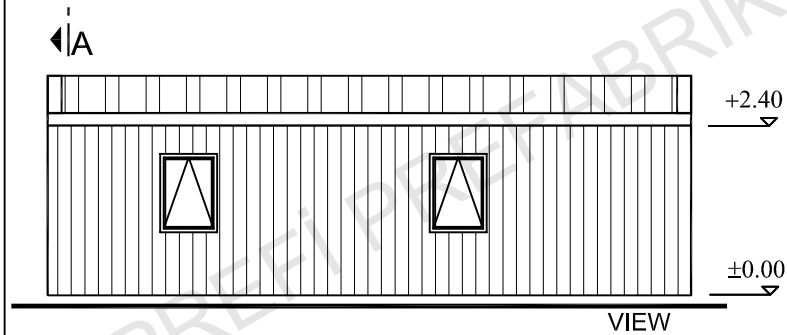
m<sup>2</sup>  
470.70 m<sup>2</sup>

REFERANS NO: PROJE NO: SAYFA /PAGE:

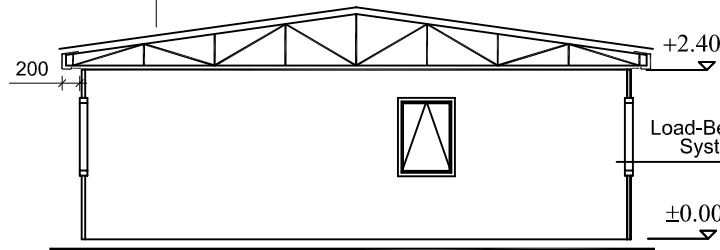




PLAN



VIEW



A-A SECTION

0.50 mm. Trapezoidal Galvanized steel sheet  
Galvanized Steel Purlin  
Galvanized Rafter  
100mm. 14 kg/m<sup>3</sup> Glasswool Insulation  
White Vinly Coated Gypsum Board

External Surfaces 0.70 mm Thickness Coil-coated  
Painted PVC Film Coated Galvanize Steel.  
80 mm. 14 kg/m<sup>3</sup> Thickness Glasswool  
Galvanized Specially C/U Formed Profiles  
Internal Wall Clad 8 mm Thickness Cement  
Bounded Particular Panel /Fiber Cement Panel

|                             |                                 |             |
|-----------------------------|---------------------------------|-------------|
| P1                          | WINDOW                          | 800 X 1100  |
| P2                          | WINDOW                          | 600 X 400   |
| K1                          | EX. DOOR                        | 850 X 2000  |
| K2                          | IN. DOOR                        | 840 X 2000  |
| K3                          | EX. DOOR                        | 1700 X 2000 |
| K4                          | WC DOOR                         | 740 X 1990  |
| K5                          | IN. DOOR                        | 1700 X 2000 |
| K6                          | EX. DOOR                        | 1250 X 2000 |
| K8                          | FENCE DOOR                      | 750 X 2000  |
| ⊖                           | SWITCH                          |             |
| ⊖                           | DOUBLE SWITCH                   |             |
| —                           | 1 X 40 TMS ARMATURE             |             |
| —                           | 2 X 40 TMS ARMATURE             |             |
| ⊞                           | 4 X18 PAROBOLIC ARMATURE        |             |
| +C                          | LATERAL EARTH SOCKET            |             |
| —                           | TELEPHONE LINE                  |             |
| —                           | UPS                             |             |
| —                           | TV LINE                         |             |
| —E                          | NETWORK LINE                    |             |
| 1 ⊗                         | C TYPE GLOBE                    |             |
| 2 ⊗                         | C TYPE GLOBE WITH WIRE GUARD    |             |
| ⊞                           | (220V)SURFACE MOUNTING FUSE BOX |             |
| ●                           | SMOKE DEDECTOR                  |             |
| ALL MEASURED IN MILLIMETERS |                                 |             |

**P r e f i**  
PREFABRİK YAPI END. BİLİŞİM ve TİCARET LTD.ŞTİ.  
Ankara - İstanbul Karayolu, 30. km  
Akıncı Kavşağı, Kazan 06980 Ankara  
Tel:+90(312) 815 49 75(Pbx) Fax:+90(312) 815 49 78  
www.Prefi.com.tr e-posta: pref@prefi.com.tr

ÇİZEN:  
DRAWN:  
KONTROL:  
CHK:  
ONAYLAMA:  
APPROVAL: H.V.Y.

FİRMA /COMPANY:  
**500 PER CAMP**

BASLIK /TITLE:  
**DOCTOR**

m<sup>2</sup>

71.64 m<sup>2</sup>

TARİH/DATE:

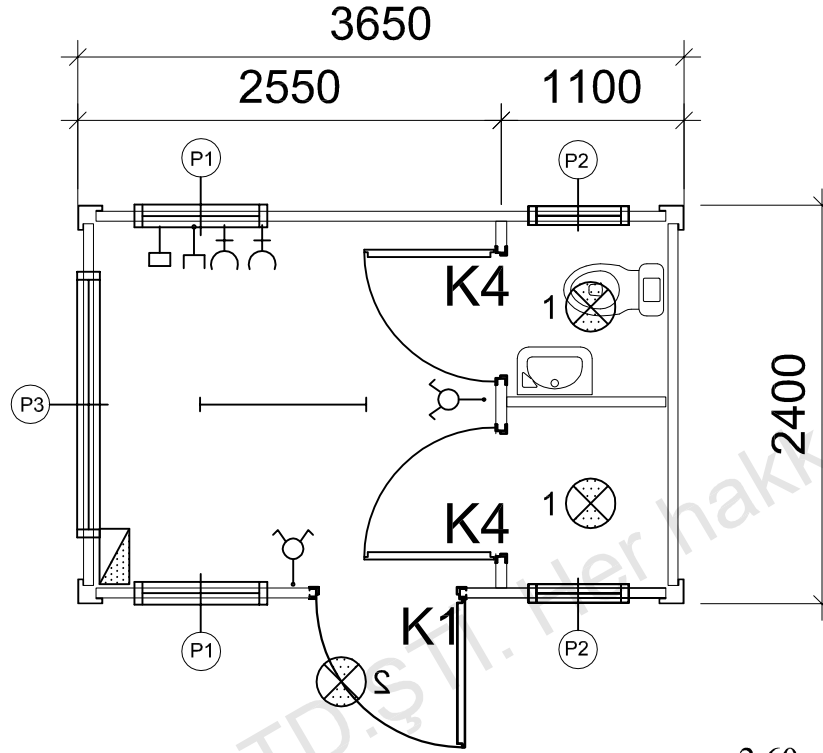
REFERANS NO:

PROJE NO:

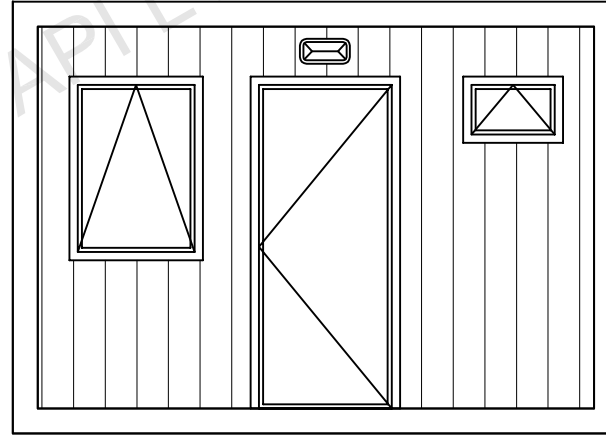
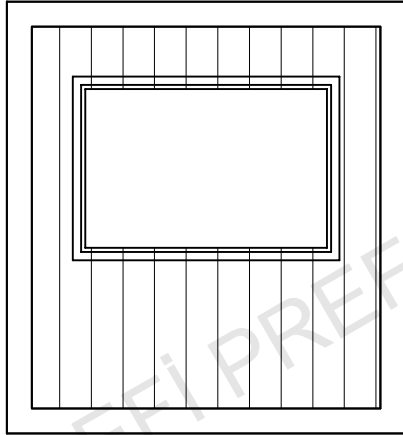
REV 00

SAYFA /PAGE:

2 UNITS



|                             |                                |             |
|-----------------------------|--------------------------------|-------------|
| P1                          | WINDOW                         | 800 X 1100  |
| P2                          | WINDOW                         | 600 X 400   |
| K1                          | EX. DOOR                       | 850 X 2000  |
| K2                          | IN. DOOR                       | 840 X 2000  |
| K3                          | EX. DOOR                       | 1700 X 2000 |
| K4                          | WC DOOR                        | 740 X 1990  |
| K5                          | IN. DOOR                       | 1700 X 2000 |
| K6                          | EX. DOOR                       | 1250 X 2000 |
| K8                          | FENCE DOOR                     | 750 X 2000  |
| —○                          | SWITCH                         |             |
| —□                          | DOUBLE SWITCH                  |             |
| —                           | 1 X 40 TMS ARMATURE            |             |
| —                           | 2 X 40 TMS ARMATURE            |             |
| —                           | 4 X18 PARABOLIC ARMATURE       |             |
| —C                          | LATERAL EARTH SOCKET           |             |
| —T                          | TELEPHONE LINE                 |             |
| —U                          | UPS                            |             |
| —TV                         | TV LINE                        |             |
| —E                          | NETWORK LINE                   |             |
| —C                          | C TYPE GLOBE                   |             |
| —C                          | C TYPE GLOBE WITH WIRE GUARD   |             |
| —                           | 220V SURFACE MOUNTING FUSE BOX |             |
| —                           | SMOKE DEDECTOR                 |             |
| ALL MEASURED IN MILLIMETERS |                                |             |



**P r e f i**  
PREFABRİK YAPI END. BİLİŞİM ve TİCARET LTD.ŞTİ.  
Ankara - İstanbul Karayolu, 30. km  
Akıncı Kavşağı, Kazan 06980 Ankara  
Tel:+90(312) 815 49 75(Pbx) Fax:+90(312) 815 49 78  
www.Prefi.com.tr e-posta: pref@prefi.com.tr

ÇİZEN: E.Ç.  
KONTROL: CHK.  
ONAYLAMA: H.V.Y.  
APPROVAL:

FİRMA /COMPANY:  
**500 PER CAMP**

TARİH/DATE:

BASLIK /TITLE:  
**SECURITY CONTAINER**

m<sup>2</sup>

8.76 m<sup>2</sup>

REFERANS NO: PROJE NO: SAYFA /PAGE: